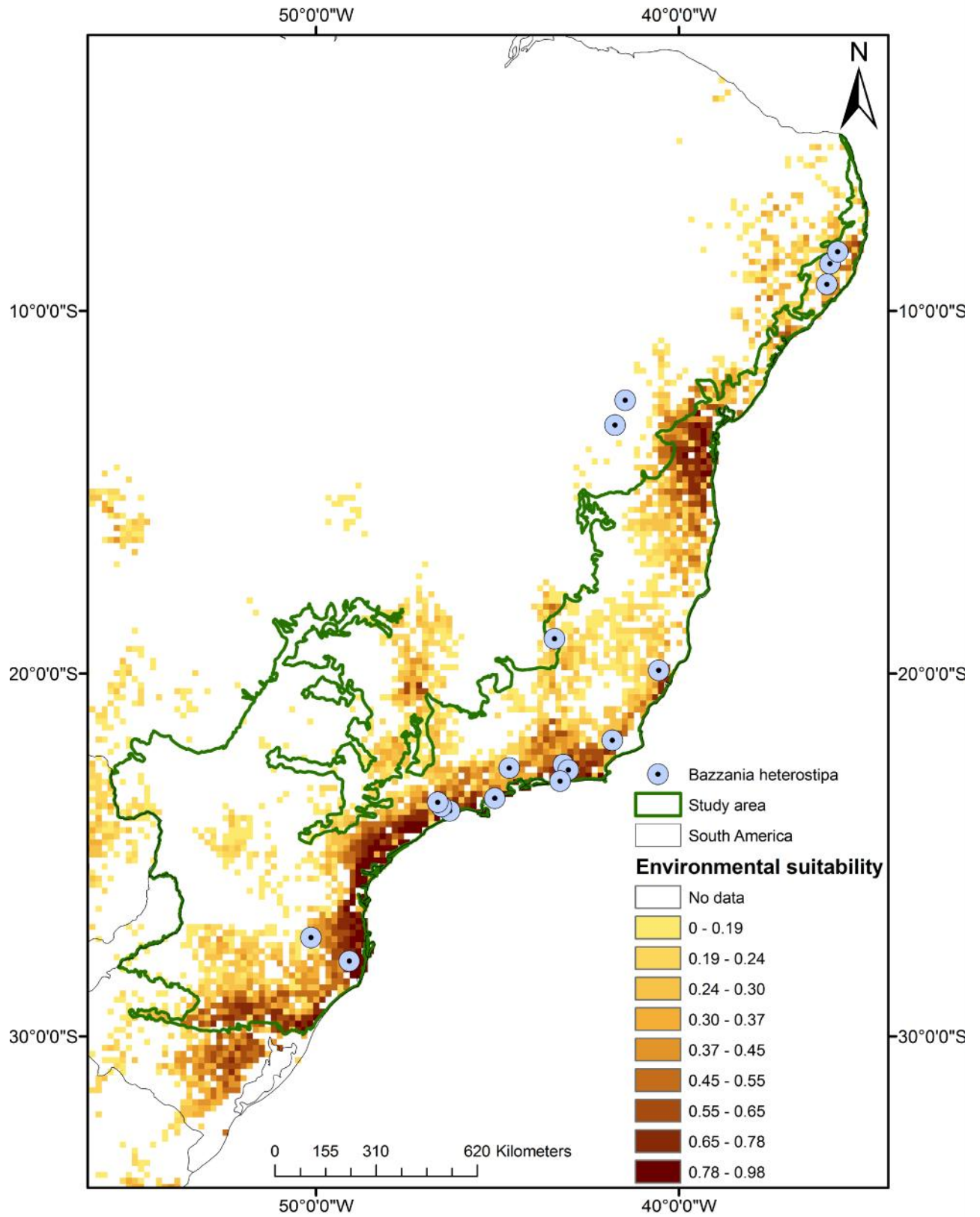
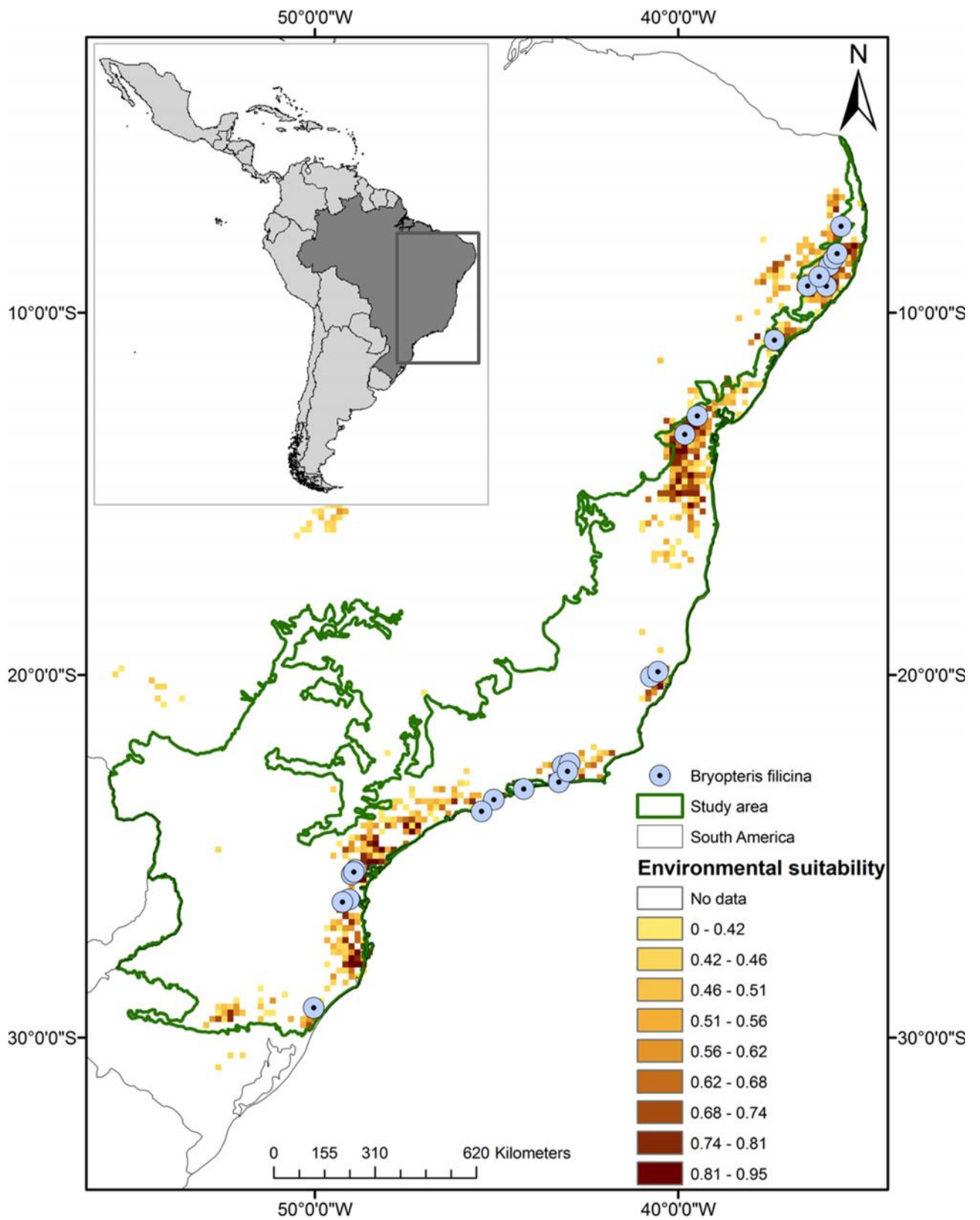


ELECTRONIC SUPPLEMENTARY MATERIAL

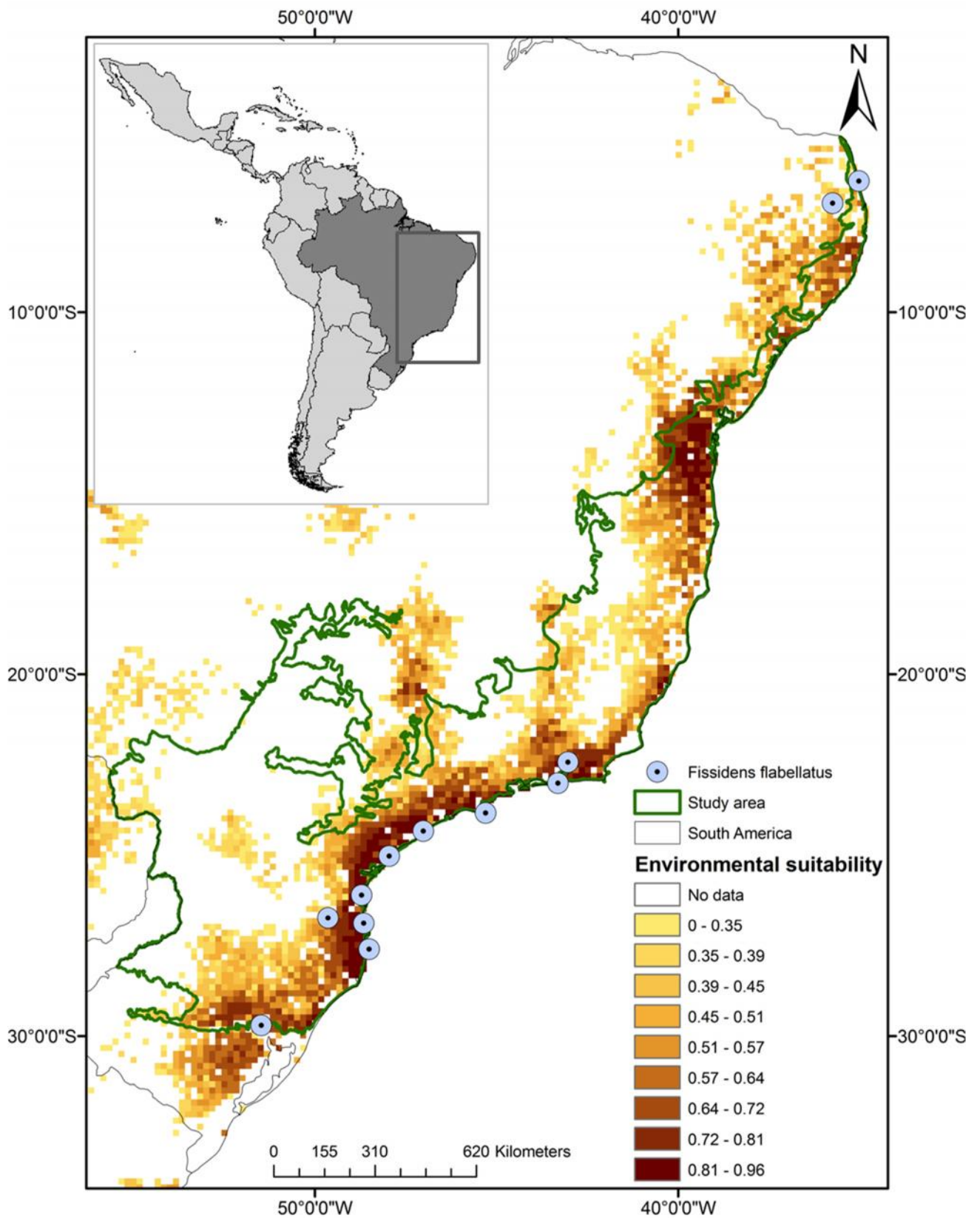
Appendix A1. Maxent potential distribution model for the *Bazzania heterostipa* (Steph.)
Fulford species in the Brazilian Atlantic Forest.



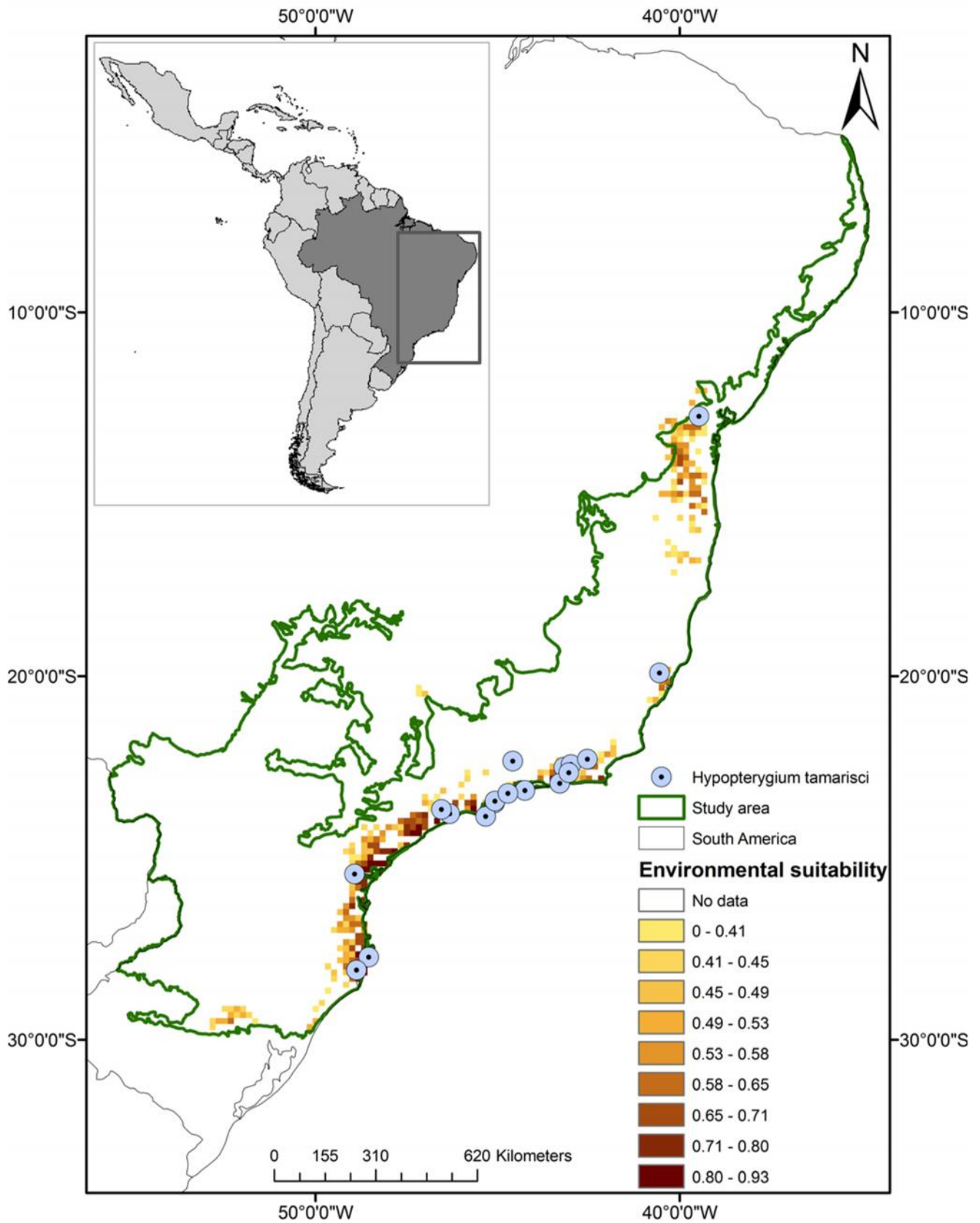
Appendix A2. Maxent potential distribution model for the *Bryopteris filicina* (Sw.) Nees species in the Brazilian Atlantic Forest.



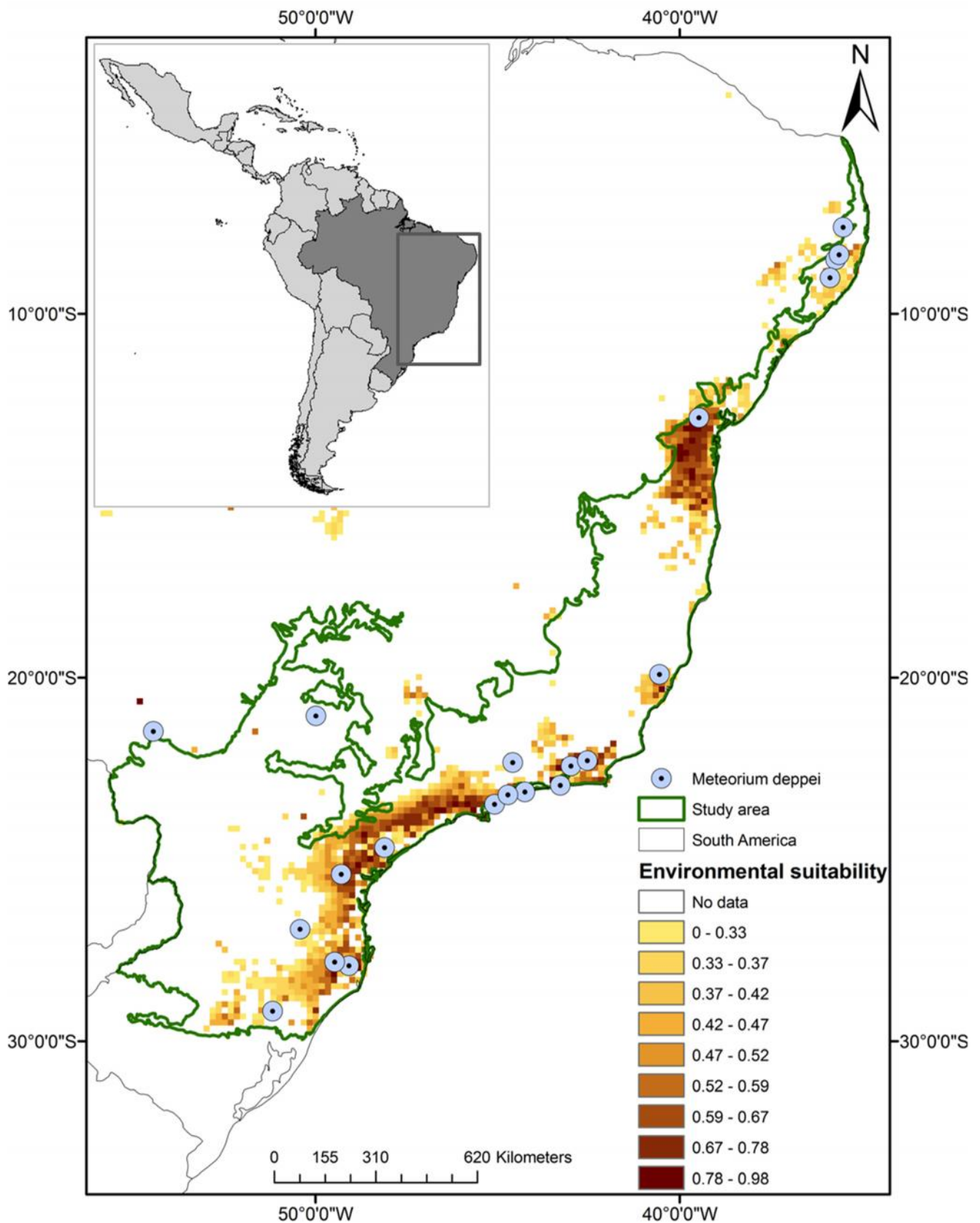
Appendix A3. Maxent potential distribution model for the *Fissidens flabellatus* Hornsch species in the Brazilian Atlantic Forest.



Appendix A4. Maxent potential distribution model for the *Hypopterygium tamarisci* (Hedw.) Brid. species in the Brazilian Atlantic Forest.

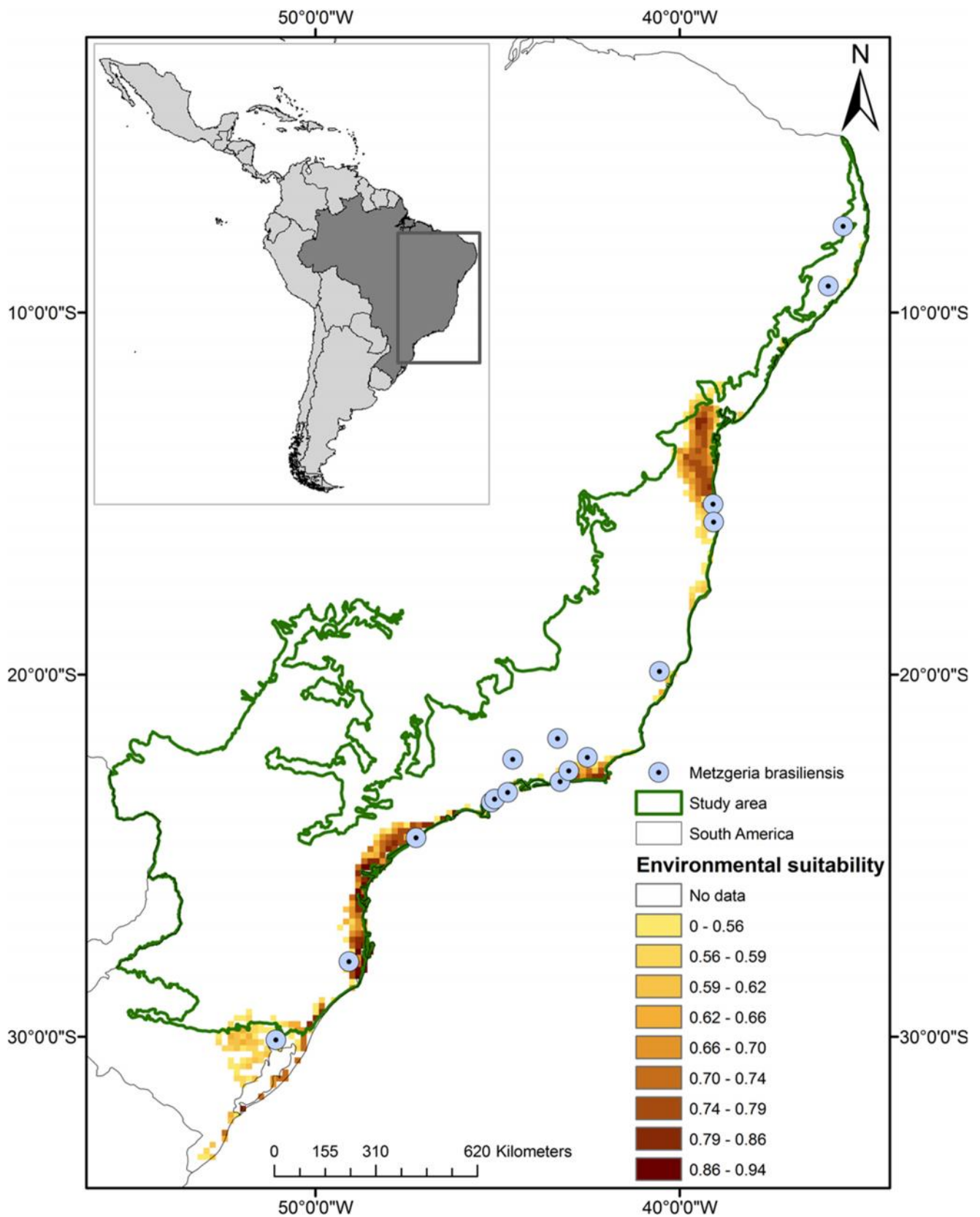


Appendix A5. Maxent potential distribution model for the *Meteorium deppei* (ex Hornsch. Müll. Hal.) Mitt. species in the Brazilian Atlantic Forest.



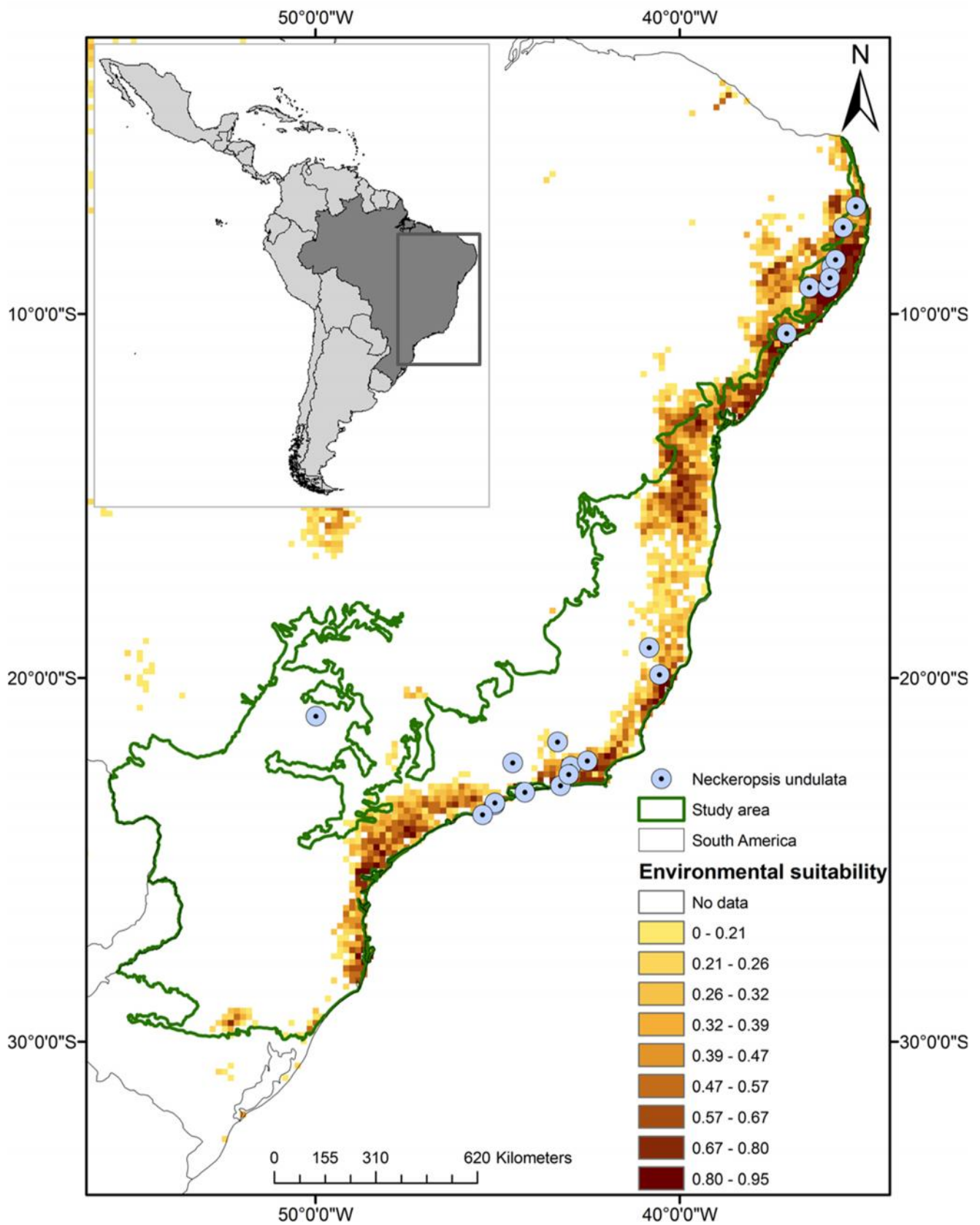
Appendix A6. Maxent potential distribution model for the *Metzgeria brasiliensis* Schiffn.

species in the Brazilian Atlantic Forest.

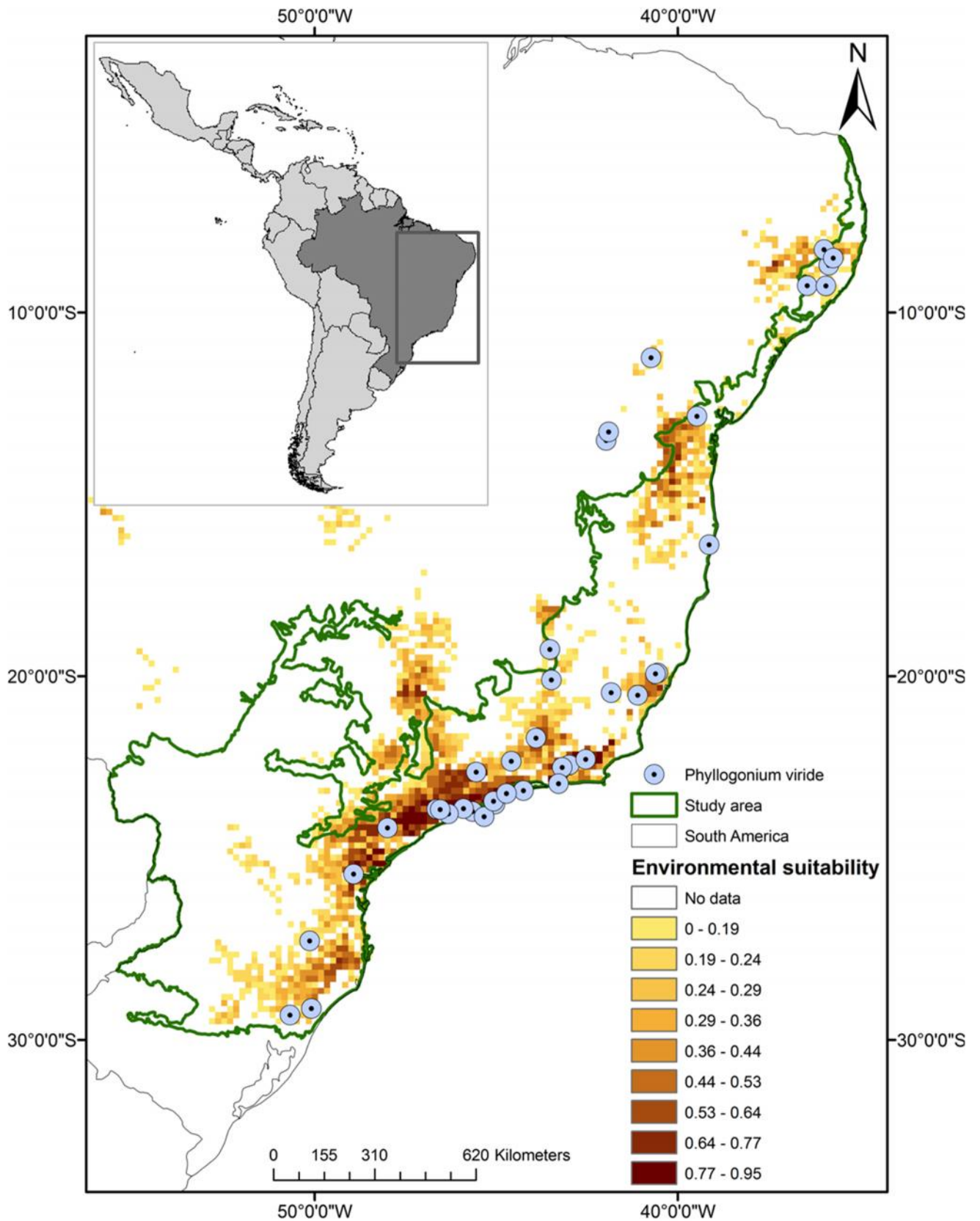


Appendix A7. Maxent potential distribution model for the *Neckeropsis undulata* (Hedw.)

Reichardt species in the Brazilian Atlantic Forest.

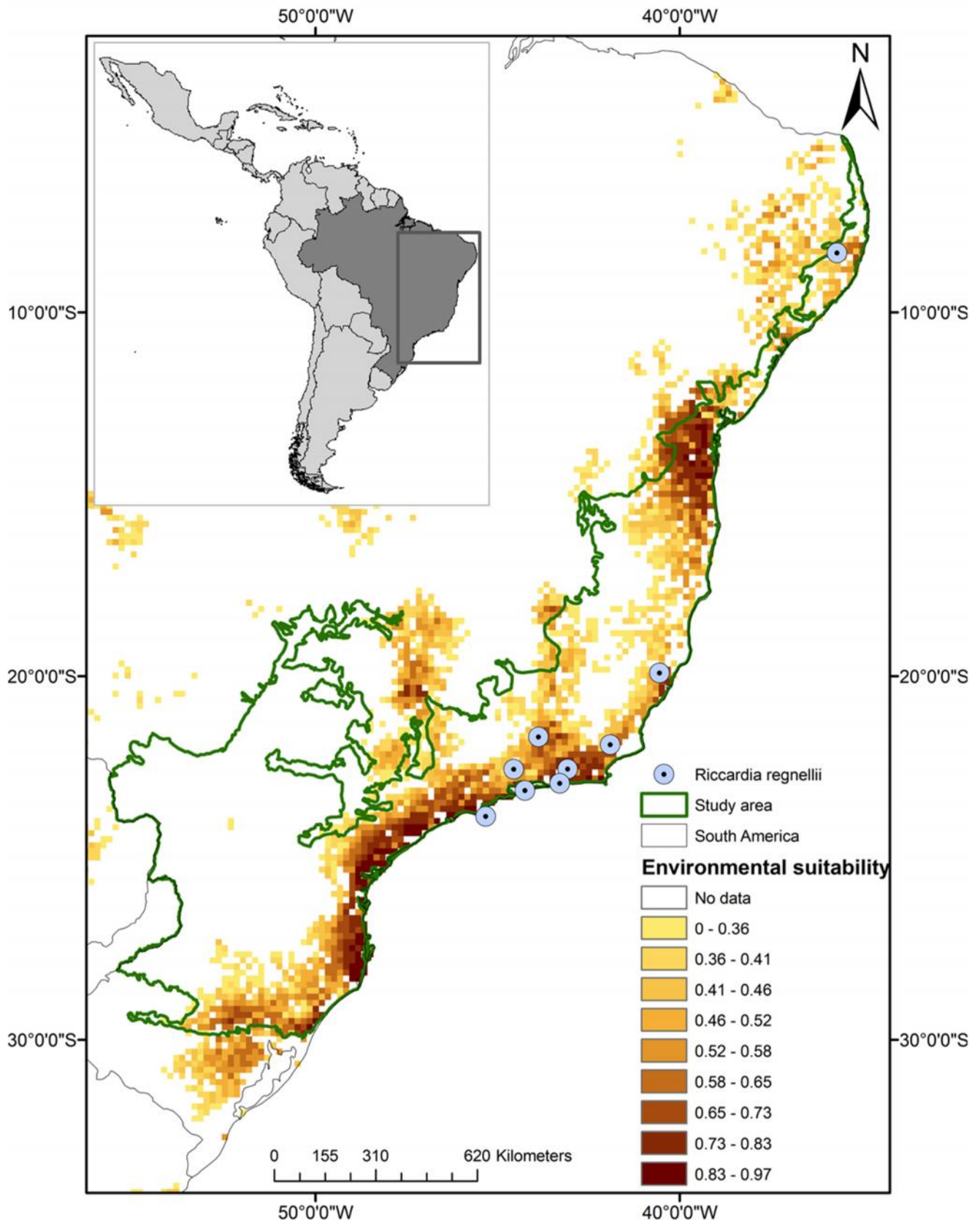


Appendix A8. Maxent potential distribution model for the *Phyllogonium viride* Brid. species in the Brazilian Atlantic Forest.



Appendix A9. Maxent potential distribution model for the *Riccardia regnellii* (Ångstr.)

Hell species in the Brazilian Atlantic Forest.



Appendix A10. Maxent potential distribution model for the *Vitalianthus bischlerianus* (K.C. Pôrto & Grolle) R.M. Schust. & Giacotti. species in the Brazilian Atlantic Forest.

