



Hidden Diversity in the Mountain Chorus Frog (*Pseudacris brachyphona*) and the Diagnosis of a New Species of Chorus Frog in the Southeastern United States

Authors: Ospina, Oscar E., Tieu, Lynee, Apodaca, Joseph J., and
Lemmon, Emily Moriarty

Source: *Copeia*, 108(4) : 778-795

Published By: The American Society of Ichthyologists and
Herpetologists

URL: <https://doi.org/10.1643/CH2020009>

BioOne Complete (complete.BioOne.org) is a full-text database of 200 subscribed and open-access titles
in the biological, ecological, and environmental sciences published by nonprofit societies, associations,
museums, institutions, and presses.

Hidden Diversity in the Mountain Chorus Frog (*Pseudacris brachyphona*) and the Diagnosis of a New Species of Chorus Frog in the Southeastern United States

Oscar E. Ospina^{1,¶}, Lynee Tieu^{1,¶}, Joseph J. Apodaca², and Emily Moriarty Lemmon¹

A major driver generating amphibian diversity in the Appalachian Mountains is the complex paleogeography of the zone. Although the Appalachian Mountains have been widely studied, much of its amphibian phylogeography remains poorly known. The Mountain Chorus Frog (*Pseudacris brachyphona*) is one example of an understudied organism due to its elusiveness, patchy distribution, and short breeding seasons. Phylogenetic studies have suggested the existence of divergent lineages within *P. brachyphona*; however, insufficient sampling and the lack of diagnostic morphological traits have prevented further assessment of their taxonomic status. Using a genome-wide nuclear data set obtained via anchored hybrid enrichment, acoustic data, and ecological modeling, we tested for the existence of cryptic species within *P. brachyphona*. Our species tree estimation supports previous mitochondrial-based phylogenetic hypotheses that separate *P. brachyphona* into the Northern and Southern clades. Population genetic clustering also shows a sharp genetic break, which is concordant with these clades. Admixture was observed between the Northern clade and another chorus frog species (*P. feriarum*). Analysis of advertisement calls shows a divergent, faster pulse rate, and higher dominant frequency call for the Southern clade in comparison to the Northern clade and other trilling chorus frogs. Furthermore, species distribution models showed that habitat suitability for the Southern clade included pine-dominated and drier areas compared to the Northern clade. In light of the genetic, acoustic, and ecological divergence between the clades, we propose to elevate the taxonomic status of the Southern clade and name this new species the Collinses' Mountain Chorus Frog (*P. collinsorum*, new species). The new species ranges across northern Alabama, and extends into Georgia, eastern Mississippi, and southern Tennessee. *Pseudacris collinsorum*, new species, is geographically separated from its sister species, *P. brachyphona*, by the Tennessee River and surrounding Blue Ridge Escarpment. This study highlights the need for genus-wide, population-level genetic assessments and integrative data sets to uncover diversity within anurans.

Un factor importante para la generación de diversidad en los Montes Apalaches es la paleogeografía compleja de esta zona. Aunque los Montes Apalaches han sido estudiados ampliamente, mucho de su filogeografía de anfibios continúa sin conocerse. *Pseudacris brachyphona* es un ejemplo de estos organismos poco estudiados debido a su carácter esquivo, distribución en parches, y periodo reproductivo corto. Estudios filogenéticos han sugerido la existencia de linajes divergentes dentro de *P. brachyphona*. Sin embargo, un muestreo insuficiente y la falta de caracteres morfológicos diagnósticos and dificultado una evaluación mas completa de su estatus taxonómico. Con el uso de secuencias de ADN nuclear obtenidas a nivel genómico mediante "anchored hybrid enrichment," datos acústicos y modelamiento ecológico, evaluamos la existencia de especies crípticas dentro de *P. brachyphona*. Nuestra filogenia de especies apoya la hipótesis previa que separa a *P. brachyphona* en los clados Norte y Sur basada en datos mitocondriales. El análisis de agrupamiento genético también muestra una división genética clara que concuerda con dichos clados. Observamos posible hibridación entre el Clado Norte con otra especie relacionada (*P. feriarum*). El análisis de cantos mostró divergencia acústica con una tasa de pulsos y frecuencia dominante mayor en el Clado Sur comparado con el Clado Norte y otras especies de *Pseudacris*. Adicionalmente, los modelos de distribución de especies indicaron como hábitat idóneo para el Clado Sur, las áreas abundantes en pinos y con menor precipitación en comparación con el Clado Norte. A la luz de la evidencia genética, acústica, y ecológica, proponemos elevar al Clado Sur al estatus de especie, la cual nombramos como *P. collinsorum*, especie nueva. La nueva especie habita el norte de Alabama y se extiende sobre Georgia, este de Mississippi, y sur de Tennessee. *Pseudacris collinsorum*, especie nueva, se separa geográficamente de su especie hermana, *P. brachyphona*, por el Río Tennessee y las escarpaduras alledañas al "Blue Ridge." Este trabajo resalta la necesidad de estudios genéticos a nivel de genero y población, así como el uso de conjuntos de datos integrativos que diluciden la diversidad en anuros.

THE complex geological history of the Appalachian Mountains in the southeastern U.S. has contributed to a number of phylogeographic breaks across different taxa (Kozak et al., 2006; Soltis et al., 2006; Lemmon et al., 2007a; Rissler and Smith, 2010; Ennen et al., 2017; Barrow et al., 2018). Several of these divergences occurred during the Pliocene and Pleistocene, with evidence pointing to the dynamism of glacial and interglacial episodes as the

main cause of diversification within taxa (Williams et al., 2004; Soltis et al., 2006). One important consequence of glacial/interglacial periods is that sea levels and rivers undergo dramatic changes, with the potential to impose barriers to gene flow among populations (Jones et al., 2006; Lemmon et al., 2007a). Changes in river courses of the Appalachian Mountains have been proposed as an important driver of population divergence in many amphibian species

¹ Department of Biological Science, Florida State University, 319 Stadium Drive, Tallahassee, Florida 32306; Email: (EML) chorusfrog@bio.fsu.edu. Send reprint requests to this address.

² Tangled Bank Conservation, 128 Bingham Road, Suite 1150, Asheville, North Carolina 28806; Email: jj@tbconservation.org.

[¶] The authors made equal contributions to this paper.

Submitted: 18 January 2020. Accepted: 30 May 2020. Associate Editor: B. L. Stuart.

© 2020 by the American Society of Ichthyologists and Herpetologists DOI: 10.1643/CH2020009 Published online: 4 December 2020

from this region (Jones et al., 2006; Rissler and Smith, 2010; Barrow et al., 2018), which could be attributed to limited dispersal capabilities in some taxa (Pauley et al., 2007; Degner et al., 2010). Even though amphibian fauna of the Appalachian Mountains is relatively well studied (Soltis et al., 2006; Rissler and Smith, 2010; Barrow et al., 2018), divergence within species with reduced activity periods and restricted geographic distributions requires additional study.

The Mountain Chorus frog (*Pseudacris brachyphona*), first described by Cope (1889), is one example of an elusive and understudied species that ranges throughout the Appalachian Mountains as far south as Georgia and Mississippi in the United States (Hoffman, 1980 and references therein; Powell et al., 2016). This species can be difficult to study due to their patchy distribution, apparently small population sizes in many areas (Green, 1952; McClure, 1996; Mitchell and Pauley, 2005), and crypsis in their natural habitat (Schwartz, 1955). In addition, *P. brachyphona* is challenging to detect outside the brief breeding season, which occurs in late winter and early spring, with the peak of their season depending upon rainfall and temperature in the local area (Schwartz, 1955; Green, 1964). Breeding activity typically lasts for a few weeks (Forester et al., 2003), and the shortness of the season during which these frogs can be reliably detected has probably contributed to the paucity of information available for this species. *Pseudacris brachyphona* breed in roadside ditches, pools of standing water in roads, low wet areas on mountainsides, and in formerly forested areas of clear-cut fields and slopes (Green, 1938; Hoffman, 1980). Outside of the breeding season, they disperse to nearby upland habitats (Mitchell and Pauley, 2005).

Whereas some life history information and morphological data have been published for *P. brachyphona* (Walker, 1932; Barbour and Walters, 1941; Wright and Wright, 1949; Schwartz, 1955; Barbour, 1957), molecular data have only recently been applied to understand the evolutionary history of this species. Previous genetic studies included *P. brachyphona* in genus-wide phylogenetic analyses of *Pseudacris* based on albumin and allozyme data (Maxson and Wilson, 1975; Hedges, 1986), mitochondrial sequence data (Moriarty and Cannatella, 2004; Lemmon et al., 2007a, 2007b), and nuclear sequence data (Barrow et al., 2014; Banker et al., 2020). These studies determined that *P. brachyphona* is the sister species to Brimley's Chorus Frog (*P. brimleyi*) from along the Atlantic Coast, both of which have fast pulse rate calls. The clade formed by these two species is sister to the remaining taxa in the trilling frog clade, which is a subgroup of taxa with pulsed calls within *Pseudacris* (Lemmon et al., 2007a).

Although the phylogenetic position of *P. brachyphona* has been resolved, information is lacking regarding genetic structure within the species. The only intraspecific genetic data available to date are from a 25-individual mitochondrial sequence data set (Lemmon et al., 2007b). This study found a strongly supported (bootstrap = 100) geographic split between samples referred to as the Northern and Southern clades. The Northern clade included samples from Kentucky, Ohio, Tennessee, Virginia, West Virginia, and Northern Alabama, whereas the Southern clade included those from Alabama, Georgia, and North Carolina. Furthermore, Lemmon et al. (2007b) observed a mismatch between morphological/acoustic identification of some individuals and their mitochondrial haplotype, suggesting that *P. brachyphona* may

hybridize with another chorus frog, *P. feriarum*, with which it overlaps in lower elevation portions of its range.

Despite evidence of a genetic split within *P. brachyphona*, Lemmon et al. (2007b) refrained from making taxonomic changes until additional lines of evidence regarding the distinctiveness of the Northern and Southern clades were assembled. Specifically, their study proposed examining ecological and behavioral data, as well as determining whether nuclear sequence data would be concordant with their mitochondrial data. To continue the work begun by Lemmon et al. (2007b), this study aims to: (1) investigate whether nuclear sequence data from >1800 loci concur with mitochondrial data regarding a deep genetic split between the Northern and Southern clades described by Lemmon et al. (2007b); (2) test for genetic evidence of hybridization between *P. brachyphona* and closely related congener *P. feriarum*; (3) assess whether clades of *P. brachyphona* occupy different ecological niches; (4) test for significant behavioral differences between clades with respect to male acoustic signals; and (5) test for morphometric differences between clades. We evaluate this information to define whether the clades within *P. brachyphona* require taxonomic changes and to infer possible geographical features that contributed to this phylogeographic break.

MATERIALS AND METHODS

Sample selection and DNA extraction.—Samples of *P. brachyphona* and outgroups were collected across their range for genetic analysis in the early 2000s. Assistance in these collections was provided by a network of herpetologists across multiple states (see Acknowledgments). A total of 36 chorus frog specimens (33 *P. brachyphona* and outgroups: two *P. feriarum* and one *P. brimleyi*) were collected from 29 counties (33 localities) across the eastern United States (Fig. 1, Table 1). Appropriate state scientific collecting permits and IACUC protocol approvals were obtained prior to specimen collection. Frogs were either toe-clipped or dissected for liver, leg muscle, and heart tissue. Tissues were frozen in liquid nitrogen or preserved in tissue buffer or 95% ethanol and stored at -80°C . Voucher specimens were deposited into either the Texas Natural History Collection (University of Texas at Austin Biodiversity Center), the Fort Hays State University's Sternberg Museum of Natural History, or the University of Florida Museum of Natural History. Genomic DNA was extracted from tissue samples using the OMEGA bio-tek E.Z.N.A. Tissue DNA kit.

Data generation and assembly.—Samples were processed and analyzed at the Center for Anchored Phylogenomics at Florida State University (<https://anchoredphylogeny.com>) following the methods described in Lemmon et al. (2012) and Prum et al. (2015). Genomic DNA was quantified via Qubit™ fluorometer using a dsDNA HS Assay kit (Invitrogen™). A 2% agarose gel was used to visualize the size and quality of the DNA. This information was used to determine the amount of time needed to shear the sample to size range of 175–575 bp on a Covaris E220 focused ultrasonicator (Covaris Inc.). Sheared DNA samples underwent genomic library preparation following the protocol in (Meyer and Kircher, 2010) in 96-well plates using a Beckman-Coulter Biomek FXp liquid handling robot.

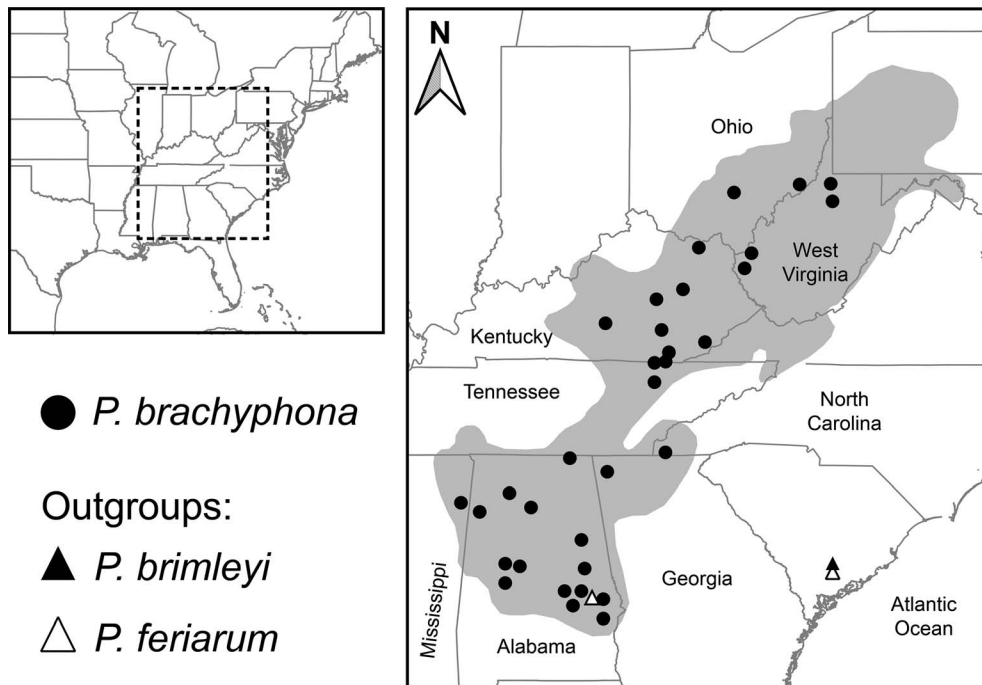


Fig. 1. Samples of the Mountain Chorus Frog collected for this study and used in genetic analyses. Frogs were collected at several locations (solid dots) throughout the Appalachian Mountains in Eastern U.S. As outgroups, specimens of *P. brimleyi* and *P. feriarum* (solid and hollow triangles, respectively) were collected.

Indexed samples were pooled (18 samples per pool) in equal concentrations such that each pool contained a total of 750 ng of library DNA in 3.4 μ L of water. Hybrid enrichment was conducted on each library pool using the custom *Pseudacris* v.1 probes (Banker et al., 2020), produced in a SureSelectXT kit (Agilent Technologies). Enriched pools were quantified and pooled together in equimolar concentrations for sequencing. The sequence pools were size-selected further prior to sequencing using the electrophoresis-based Pip-pinHT system (Sage Science, Inc.) for the size range 400–600 bp (including library adapters) in order to decrease sequencing bias towards short fragments containing mostly adapters. All sequencing pools were sequenced on an Illumina HiSeq 2500 lane in the Translational Science Lab, Florida State University's College of Medicine. The sequencing protocol included 200 cycles for each of the paired reads, in addition to the dual 8 bp indexing reads.

After low quality reads were removed using the CASAVA high chastity filter, reads were demultiplexed using the 8 bp indexing read with no mismatches tolerated. Adapter sequences were subsequently removed, and overlapping reads were merged using the Merge program described by Rokyta et al. (2012). Probe regions and flanks were recovered for each sample using the quasi-*de novo* assembly approach described in Prum et al. (2015) and Hamilton et al. (2016). Probe region sequences from both *P. feriarum* and *P. nigrita* were used as references in the assembly. To reduce the effects of rare indexing errors and cross contamination, we discarded assembled contigs derived from less than 10% of the typical number for that locus (compared to other homologs for all individuals). Orthology was assessed for each locus using pairwise divergence across the homologs for each locus (see Hamilton et al., 2016 for details). Alignments were constructed using MAFFT v7.023b (Kato and Standley, 2013) for each set of orthologs and subsequently masked and trimmed following Hamilton et al. (2016), but with the following parameters: MINGOODSITES = 14, MINPROPSAME = 0.5, and MISSINGALLOWED = 18. These alignments

were manually inspected in Geneious R9 (Biomatters Ltd.; Kearse et al., 2012) to ensure that misaligned regions were not present.

Phylogenetic inference.—Gene trees for each sequence alignment were generated by using RAxML v8.2 (Stamatakis, 2014) assuming GTR + Γ as substitution model and including *P. feriarum* and *P. brimleyi* as outgroups. We performed 100 replicates for each gene tree in order to get bootstrap support and to estimate a species tree using ASTRAL-III v5.6 (Zhang et al., 2018). Given that contracting low-support branches may improve overall inference when using coalescent methods (Zhang et al., 2017), we contracted branches with bootstrap support <10% in each of the gene trees. The species tree was then estimated by performing multi-locus bootstrapping over the 100 replicates previously generated for each gene tree. In addition to the ASTRAL-III species tree, we estimated a phylogeny in RAxML v8.2, this time using a concatenated version of the 1,669 loci alignments, assuming GTR + Γ as substitution model, and with bootstrap support based on 100 replicates. Results were visualized in TreeGraph v2.14 (Stöver and Müller, 2010).

Bayes factor species delimitation.—To test for the existence of independent lineages within *P. brachyphona*, we calculated Bayes delimitation factors (BF) for three different models within the phylogeny of *P. brachyphona* (Leaché et al., 2014). The first model lumped all clades of *P. brachyphona* in one single clade, which is concordant with current taxonomy (single species). The second model split the phylogeny of *P. brachyphona* in two clades as supported by geographic subdivision (see Results). Finally, we tested a null model in which individuals were randomly assigned to the two clades from model 2. Marginal likelihood estimates (MLE) were obtained for each model using 48 sampler path steps of 100,000 MCMC repetitions. After a 10% burn-in, the highest MLE from each model was used to calculate Bayes factors as $BF = 2^{*(Model\ Highest\ MLE - Alternative\ Model\ MLE)}$. The BF

Table 1. Genetic sampling of *Pseudacris* across eastern United States. ID number refers to the ID of the genetic sample processed at Florida State University's Center for Anchored Phylogenomics. An "n/a" refers to samples without a voucher (tissue sample only). Field collection abbreviations are as follows: ECM—Emily Moriarty Lemmon; JA—J.J. Apodaca; JTC—Joseph T. Collins; MHP—Museum of the High Plains (Fort Hays Sternberg Museum of Natural History).

ID number	Field number	Museum voucher number	Species	Proposed species name	State	County	Latitude	Longitude
I26085	JA-06-13	n/a	<i>P. brachyphona</i>	<i>P. brachyphona</i>	AL	Jackson	34.94117	-86.07334
I27667	JTC3104	FHSM 12898	<i>P. brachyphona</i>	<i>P. brachyphona</i>	KY	Harlan	36.92790	-83.21540
I25828	JTC2457	TNHC 62402	<i>P. brachyphona</i>	<i>P. brachyphona</i>	KY	Laurel	37.13330	-84.13330
I27686	MHP13382	FHSM 13382	<i>P. brachyphona</i>	<i>P. brachyphona</i>	KY	Lewis	38.61340	-83.21200
I25872	ECM00198	TNHC 62315	<i>P. brachyphona</i>	<i>P. brachyphona</i>	KY	Madison	37.65030	-84.24170
I25883	JTC2619	TNHC 63387	<i>P. brachyphona</i>	<i>P. brachyphona</i>	KY	Powell	37.81690	-83.68110
I26027	JTC2616	TNHC 63389	<i>P. brachyphona</i>	<i>P. brachyphona</i>	KY	Taylor	37.24690	-85.31970
I27685	ECM05238	UF 190922	<i>P. brachyphona</i>	<i>P. brachyphona</i>	KY	Whitley	36.60169	-84.04760
I27684	ECM11238	n/a	<i>P. brachyphona</i>	<i>P. brachyphona</i>	KY	Whitley	36.75537	-83.97881
I26055	JTC2609	TNHC 63535	<i>P. brachyphona</i>	<i>P. brachyphona</i>	OH	Hocking	39.41610	-82.60180
I26056	ECM02070	TNHC 02241	<i>P. brachyphona</i>	<i>P. brachyphona</i>	OH	Washington	39.54784	-81.21411
I10887	ECM05218	UF 190921	<i>P. brachyphona</i>	<i>P. brachyphona</i>	TN	Campbell	36.41667	-84.28384
I21170	ECM05227	UF 188128	<i>P. brachyphona</i>	<i>P. brachyphona</i>	TN	Campbell	36.41667	-84.28384
I27687	MHP13373	FHSM 13373	<i>P. brachyphona</i>	<i>P. brachyphona</i>	WV	Cabell	38.3978	-82.44683
I26057	JTC2669	TNHC 66044	<i>P. brachyphona</i>	<i>P. brachyphona</i>	WV	Harrison	39.27150	-80.51920
I26065	JTC2705	TNHC 66046	<i>P. brachyphona</i>	<i>P. brachyphona</i>	WV	Wayne	38.16790	-82.37790
I26077	JTC2834	TNHC 66047	<i>P. brachyphona</i>	<i>P. brachyphona</i>	WV	Wetzel	39.55965	-80.55672
I26084	JA-06-05	n/a	<i>P. brachyphona</i>	<i>P. collinsorum</i>	AL	Bibb	33.04545	-87.13023
I26079	JA-06-10	UAHC 15646	<i>P. brachyphona</i>	<i>P. collinsorum</i>	AL	Cleburne	33.51356	-85.82838
I26089	ECM07212	UF 190924	<i>P. brachyphona</i>	<i>P. collinsorum</i>	AL	Cullman	34.08443	-86.89349
I10886	ECM00111	TNHC 62305	<i>P. brachyphona</i>	<i>P. collinsorum</i>	AL	Elmore	32.51750	-86.00711
I27666	ECM00112	TNHC 62306	<i>P. brachyphona</i>	<i>P. collinsorum</i>	AL	Elmore	32.51750	-86.00711
I25905	ECM00115	TNHC 62308	<i>P. brachyphona</i>	<i>P. collinsorum</i>	AL	Elmore	32.51750	-86.00711
I26083	JA-06-04	n/a	<i>P. brachyphona</i>	<i>P. collinsorum</i>	AL	Hale	32.91830	-87.43930
I25920	JA-06-01	UAHC 15645	<i>P. brachyphona</i>	<i>P. collinsorum</i>	AL	Hale	32.92216	-87.44027
I27671	ECM07199	UF 190923	<i>P. brachyphona</i>	<i>P. collinsorum</i>	AL	Lamar	34.00763	-87.97950
I25811	ECM00452	TNHC 63121	<i>P. brachyphona</i>	<i>P. collinsorum</i>	AL	Lawrence	34.33436	-87.35025
I26086	ECM07746	UF 190925	<i>P. brachyphona</i>	<i>P. collinsorum</i>	AL	Russell	32.28645	-85.36535
I26088	ECM07775	UF 190926	<i>P. brachyphona</i>	<i>P. collinsorum</i>	AL	Macon	32.28645	-85.36535
I25819	ECM00040	TNHC 62303	<i>P. brachyphona</i>	<i>P. collinsorum</i>	AL	Tallapoosa	33.00639	-85.76028
I27680	ECM01132	n/a	<i>P. brachyphona</i>	<i>P. collinsorum</i>	GA	Walker	34.70480	-85.28190
I26051	ECM00974	TNHC 63443	<i>P. brachyphona</i>	<i>P. collinsorum</i>	MS	Itawamba	34.16790	-88.37537
I26052	ECM01897	NCSM 71330	<i>P. brachyphona</i>	<i>P. collinsorum</i>	NC	Cherokee	35.04139	-84.05201
I27674	ECM10347	n/a	<i>P. feriarum</i>	<i>P. feriarum</i>	AL	Macon	32.48780	-85.60291
I25616	ECM15257	n/a	<i>P. feriarum</i>	<i>P. feriarum</i>	SC	Colleton	32.94107	-80.51640
I25720	ECM15210	n/a	<i>P. brimleyi</i>	<i>P. brimleyi</i>	SC	Colleton	32.94243	-80.51586

analysis was performed in SNAPP v1.5 (Bryant et al., 2012) as implemented in BEAST v2.6 (Bouckaert et al., 2019). Parameter files for SNAPP inference are available as supplemental material (see Data Accessibility).

Genetic clustering and population structure.—We assigned each *P. brachyphona* to genetic clusters with *Structure* v2.3 (Pritchard et al., 2000) based on a 21,702 SNP data set, as well as a subset of this data set obtained by extracting one SNP per locus (see Data Accessibility to obtain these data sets and *Structure* parameter file). For these analyses, we included the two samples of *P. feriarum* as outgroups: one originating from outside the geographic distribution of *P. brachyphona* (Colleton County, South Carolina), and one from the southernmost portion of the distribution of *P. brachyphona* (Macon County, Alabama). In both data sets, we tested for the most likely number of populations from $K = 1$ to $K = 5$ using 100,000 steps for parameter estimation, and an additional

100,000 steps as burn-in. We assumed correlated allele frequencies and no linkage among loci. To improve accuracy in estimation of K , we adjusted the ALPHA parameter to 0.5 (Wang, 2017). Runs were automated with *structure_threader* (Pina-Martins et al., 2017), performing 20 runs per each K and selection of best K s based on the Evanno Test (Evanno et al., 2005).

To provide additional support for our *Structure* analysis, we performed a discriminant analysis of principal components (DAPC) to our SNP data set as implemented in the R package *adegenet* (Jombart, 2008; R Core Team, 2018). First, the most likely number of clusters was assessed using the *find.clusters* function to estimate the Bayesian information criterion (BIC) for each K from $K = 1$ to $K = 10$. With the most likely K , we performed cross-validation (*xvalDapc* function) to identify the highest number of informative principal components (PCs) while avoiding overfitting of the cluster membership predictions. Finally, discriminant functions were estimated

with those retained PCs. Possible hybrid individuals (*P. brachyphona* × *feriarum*) were identified by estimating their hybrid index (*h*) in GenoDive (Meirmans and Van Tienderen, 2004).

Tests of isolation-by-distance.—We tested for the correlation between geographic distance and genetic distance using our SNP data set. A genetic distance matrix was calculated for all *P. brachyphona* using the function `dist.genpop` in `adegenet` (Jombart, 2008) after removal of hybrid individuals. The geographic distance matrix was calculated using the “Distance matrix” tool in QGIS v3.6 (QGIS Development Team, 2017). Estimation of correlation between the matrices was made in R using the `ade4` package (Dray and Dufour, 2007) with its function `mantel.randtest`. In addition, we tested for isolation-by-distance within the Northern and Southern clades of *P. brachyphona*.

Morphometric analyses.—We measured 191 *P. brachyphona* kept preserved at five museum collections (Supplemental Table 1; see Data Accessibility). The split between Northern and Southern clades occurs at approximately the Tennessee River and southern portion of the Blue Ridge Mountains (see Results). We used these geographic features to assign individuals from 25 counties and 6 states to the Northern and Southern clades. Measurements were taken by a single person and using an Insize digital caliper with resolution of 0.01 mm attached to its automatic data entry device. The measurements taken are defined in Duellman (2001): snout-vent length (SVL), head width (HW), head length (HL), tympanum diameter (TD), eye width (EW), snout length (SL), femur length (FL), tibia length (TL), foot length (FoL), and snout angle (SA; [$\arcsin(\text{head width}/2)/\text{head length}$] × 2). To identify overall differences in size of these features, we performed a principal component analysis (PCA) based on the regression residuals of each variable against SVL to control for body size effects. With the same residuals, we performed a series of permutation tests (1,000 replicates) for the mean residual difference between Northern and Southern clades individuals. All analyses and graphs were made in R and its packages `ggplot2`, `ggfortify`, and `dplyr` (Wickham et al., 2015; Tang et al., 2016; Wickham, 2016).

Species distribution models and tests for niche overlap.—To test for ecological divergence within *P. brachyphona*, we constructed species distribution models (SDM) that considered all known distribution of *P. brachyphona*, only the Northern clade, or only the Southern clade. In addition to the associated geographic coordinates from our specimens, we collected occurrence records from the Global Biodiversity Information Facility database (GBIF, 2019) that had a precision of at least five decimals and relied on specimens stored in museum collections. The complete list of specimens can be found in the supplemental material (Supplemental Table 2; see Data Accessibility).

We collected the 19 bioclimatic variables as provided with a resolution of 30 s (~1 Km²). These variables are derived from 30 years of temperature and precipitation measurements (Fick and Hijmans, 2017). We obtained elevation data from DIVA-GIS (<https://www.diva-gis.org/gdata>), which is provided in the form of country-level 30 s resolution rasters from the SRTM30 data set. Spatial data for vegetation was collected from LANDFIRE in the form of 30 m resolution

Existing Vegetation Type (EVT) rasters (U.S. Department of Agriculture and Department of the Interior, 2014). All spatial layers (Bioclim, elevation, and EVT) were clipped to the same extent, aligned, and converted to ASCII format in QGIS v3.6.

To avoid overfitting of species distribution models, we tested for correlations among the environmental variables using the `layerStats` function from the `raster` package in R (Hijmans and van Etten, 2017). Variables that were highly correlated ($r < -0.7$ or $r > 0.7$) with two or more variables were discarded from subsequent analyses. We excluded EVT from this correlation analysis due to the categorical nature of those data. This resulted in a set of ten variables that was used for the generation of all species distribution models.

We used the maximum entropy algorithm implemented in MaxEnt v3.4 (Phillips and Dudík, 2008) to generate species distribution models. To that end, we produced three different partitions of the occurrence data and produced SDMs with them: (1) all the occurrences of *P. brachyphona*, (2) only the Northern clade occurrences, and (3) only the Southern population occurrences. We ran ten replicate models and assessed the model’s power by means of 10-fold cross-validations and calculation of the Akaike information criterion (AIC). Following Morales et al. (2017), we allowed environmental variable responses to be modeled after quadratic or threshold features, and with output probability of occurrence following a logistic function.

Asymmetric background tests were performed to ascertain whether or not niche overlap occurs between the two clades’ SDMs. In these background tests, Schoener’s *D* and Warren’s *I* niche overlap indexes for the Northern clade SDM were compared to a distribution of 100 *D* and *I* values from SDMs generated from randomly selected points from the Southern clade distribution range. The 100 replicate MaxEnt SDMs were run in ENMtools and `rmaxent` (Baumgartner et al., 2017; Warren et al., 2019) as implemented in R. We also tested for niche overlap in the opposite direction, namely, *D* and *I* values of the Southern clade SDM vs. the random distribution from the Northern clade.

Divergence in acoustic signals within *P. brachyphona*.—

Acoustic signal data were recorded from two locations in Tennessee and Alabama corresponding to the Northern and Southern clades, respectively (Supplemental Table 3; see Data Accessibility). No recordings were analyzed from locations where *brachyphona* × *feriarum* hybrids were likely to occur. A Sennheiser ME67 shotgun microphone was used to record calls digitally onto a Fostex FR2LE portable recorder with a SuperMod upgrade (Oade Brothers Audio, Thomasville, GA), using a sampling rate of 44,100 Hz with a sample size of 16 bits. Audio files of frog calls in .wav format were analyzed using SoundRuler (reviewed by Bee, 2004; <http://soundruler.sourceforge.net/>) using the following settings: Spectrogram FFT length 1024, Hanning window size 1024, amount of overlap between FFT samples 900, and power spectrum FFT length 2048. Call characters were either extracted from the raw data output or calculated from the raw data following Lemmon (2009). Call characters examined included pulse rate (PR; 1/time from 10% maximum amplitude [pulse onset] to 10% maximum amplitude [onset] of next pulse within call), pulse number (PN; number of pulses), and call dominant frequency peak (DFP; call dominant frequency at the call maximum amplitude). Pulse rate was significantly correlated with temperature and was thus corrected to a

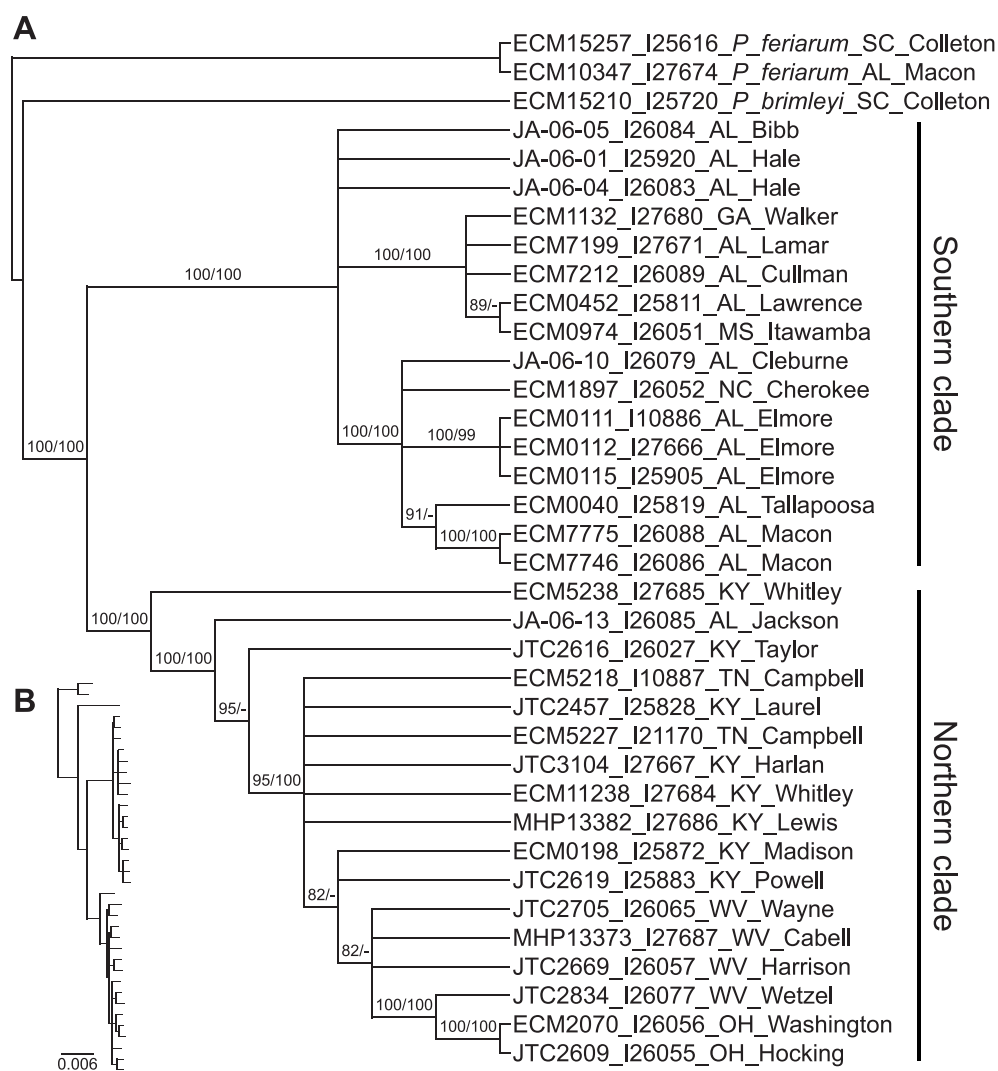


Fig. 2. Species tree for *P. brachyphona* as estimated in ASTRAL. Numbers on the branches are local posterior probabilities/bootstrap support values from RAxML (A). The identifiers are field numbers, followed by the “I” number (DNA sample identifier, see Table 1). State abbreviation and county where the sample was collected are also shown. The tree shows two well-supported clades, corresponding to *P. brachyphona* from the Northern and Southern distribution ranges, respectively. *Pseudacris brimleyi* and *P. feriarum* were included as outgroups. Branch lengths (B) are shown in the inset tree generated with RAxML.

common temperature of 14°C using a species-specific slope from linear regression analyses following the equation: $((14^{\circ}\text{C} - \text{recording temperature}) * \text{slope}) + \text{pulse rate}$, where the slope = 6.47. The slope of the linear regression was estimated from a broader set of recordings beyond what is presented in this paper (EML, unpubl. data).

To compare acoustic differences between the Northern and Southern clades of *P. brachyphona*, we conducted randomization tests and Welch t-tests between the two groups. We randomized the individual mean values of PR, PN, and DFP for 1,000 times, and each time calculated the mean difference between the Northern and Southern clades of each parameter. To perform a two-tailed test, we counted the number of times the empirical mean difference was greater than or equal to the randomized mean difference and estimated its probability of occurrence (*P*-value). The t-tests were also performed for each individual acoustic trait. All analyses were carried out in R.

Institutional abbreviations follow Sabaj (2020).

RESULTS

Phylogenetic relationships within *P. brachyphona*.—The species tree and concatenated ML trees showed evidence of two main clades within *P. brachyphona* (Fig. 2). These clades are

geographically separated and correspond to the Northern and Southern clades of *P. brachyphona* described by Lemmon et al. (2007b). Local posterior probabilities in ASTRAL and bootstrap support from RAxML were 100% for each clade. Within each clade, support for internal nodes varied, but when ASTRAL showed local posterior probabilities of >95%, RAxML also showed similarly high bootstrap support. ASTRAL and RAxML newick files are available as supplemental material (see Data Accessibility). Bayes factor analysis showed strong support towards the two-independent lineages model (MLE = -121446.29) when compared to the single-lineage model (MLE = -135936.16). The comparisons against the model with the highest MLE (two-independent lineages) yielded estimated BF = 28979.74 for the single-lineage model, and BF = 29022.24 for the randomized null model (Table 2).

Genetic clusters and population structure.—Based on the 21K SNP data set, the highest ΔK among the five tested *K* values corresponded to *K* = 2 (ΔK = 3489.9, $\ln L$ = -371679.7, SD = 36.0, Table 3), with *P. feriarum* (outgroups) being clustered together with *P. brachyphona* originating from the species' northern distribution range. Following Prunier and Holsinger (2010), we selected *K* = 3 as the most biologically relevant choice given that its ΔK was the second highest (ΔK = 991.1) and the log likelihood reaches a plateau at that point ($\ln L$ =

Table 2. Results of Bayes factor delimitation (BFD) based on 48 sampler path steps with 100,000 MCMC iterations each. Marginal likelihood estimates (MLE) were used to rank models and to compute Bayes factors (BF) by comparing each of the models against the model with the highest marginal likelihood (two species). The large BF estimates give support to the two-species model over the alternative models.

Model	MLE	Rank	BF
Two independent lineages (two species)	-121446.29	1	—
Single lineage (one species, current taxonomy)	-135936.16	2	28979.74
Two randomized lineages	-135957.41	3	29022.24

-298822.0, SD = 73.6, Supplemental Fig. 1; see Data Accessibility). With $K = 3$, we observed Southern clade *P. brachyphona* in the first cluster, Northern clade *P. brachyphona* and a putative hybrid *P. feriarum* × *brachyphona* in the second cluster (I27685), and pure *P. feriarum* (outgroups) in the third cluster (Fig. 3A, Supplemental Fig. 2; see Data Accessibility). The hybrid index for the introgressed individual (I27685) was $h = 0.66$ (95% CI: 0.654–0.672), which provided further evidence for its hybrid identity. The selection of $K = 3$ was also in agreement with our phylogenetic analyses, with clusters representing the Northern and Southern clades. The results obtained by *Structure* from the data set containing

Table 3. Likelihood estimates for each possible K during the *Structure* analysis and their Delta K (ΔK) for Evanno Method assessment (Evanno et al., 2005).

K	Dataset	Replicates	Mean LnP(K)	SD LnP(K)	ΔK
1	All SNPs	20	-570181.01	63.08	—
	1 SNP/locus		-25480.28	5.46	—
2	All SNPs	20	-371679.74	36.00	3489.93
	1 SNP/locus		-16154.82	1.83	3601.41
3	All SNPs	20	-298821.95	73.56	991.10
	1 SNP/locus		-13430.45	2.82	1434.48
4	All SNPs	20	-298872.83	62.81	0.56
	1 SNP/locus		-14752.59	1343.97	0.81
5	All SNPs	20	-298959.09	58.20	—
	1 SNP/locus		-14989.05	1214.96	—

only one SNP per locus were consistent with results from the 21K SNP data set above (Supplemental Fig. 2; see Data Accessibility).

DAPC also showed support for two genetically differentiated clusters within *P. brachyphona* (Northern and Southern; Fig. 3B, C). One discriminant function was sufficient to account for 67.4% of the genetic variance. The distribution of individuals along this discriminant function showed two narrow peaks with low differentiation within each cluster (Fig. 3C). Differentiation between the two clusters was high,

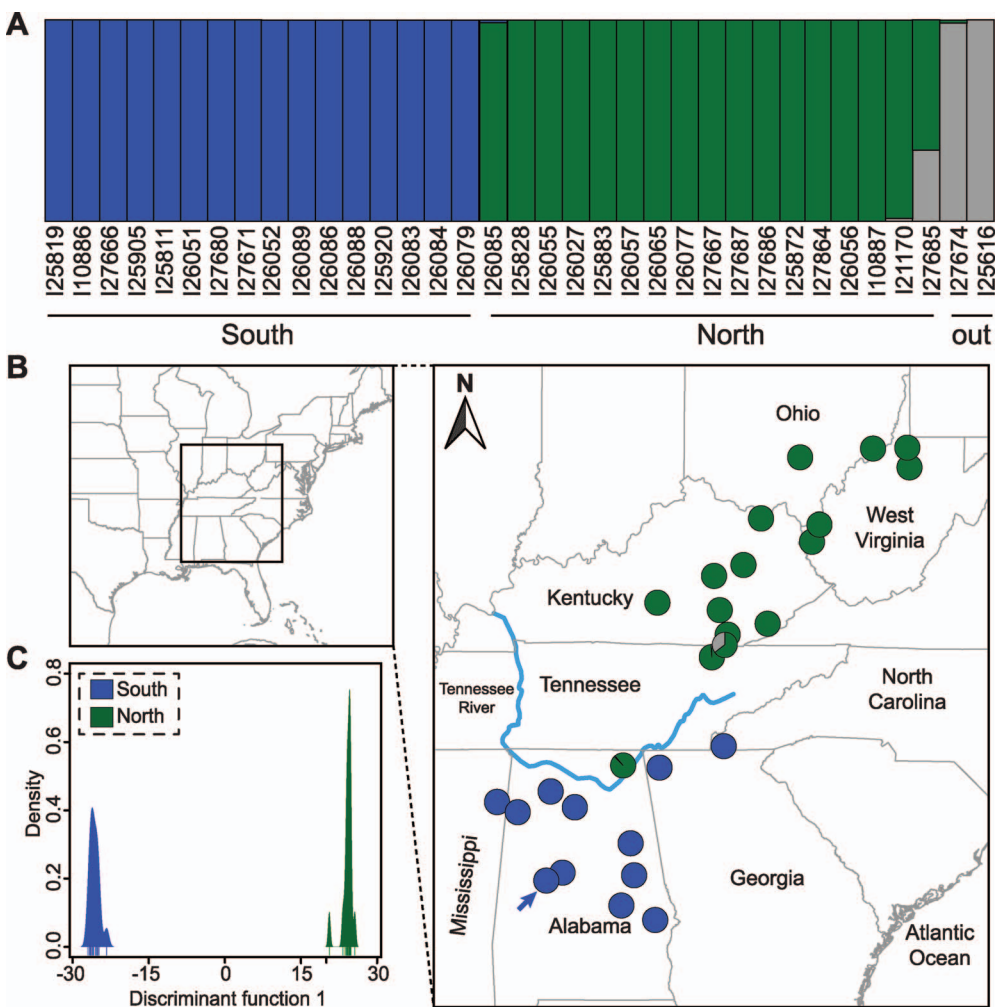


Fig. 3. Genetic clustering based on 21,702 SNPs from AHE loci for *P. brachyphona*. (A) The *Structure* plot shows two genetic clusters: Northern ($n = 17$, green) and Southern ($n = 16$, blue) as observed in the map (B). The pie charts correspond to the proportion of admixture as estimated in *Structure*. A blue arrow marks the samples from Hale County, Alabama. Two individuals assigned to the Northern cluster showed introgression from *P. feriarum* (“out,” gray). (C) The discriminant analysis of principal components (DAPC) required one discriminant function to explain 67.4% of the genetic variance. Lines at the bottom of the distributions represent one individual. The DAPC also shows two clusters in agreement with the Northern and Southern clusters from *Structure*. The location of the Tennessee River is shown.

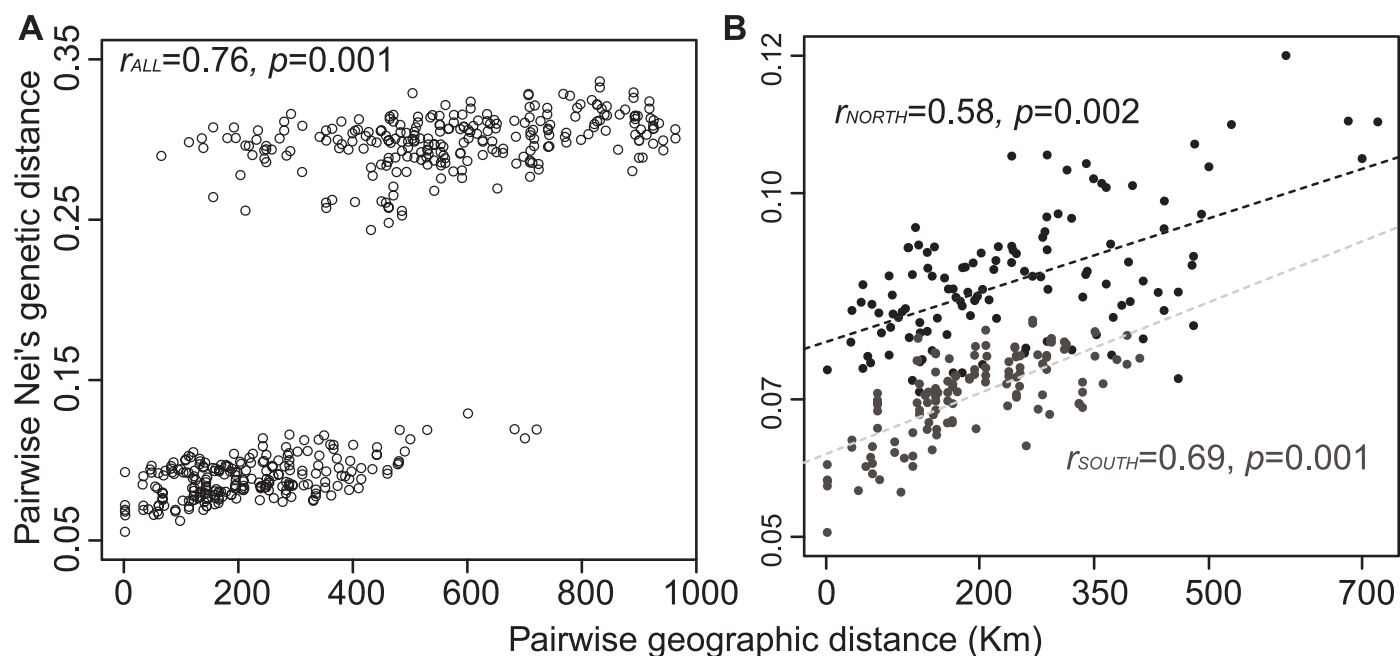


Fig. 4. Matrix correlation between pairwise genetic (Nei's) and geographic distances among individuals of *P. brachyphona*, after exclusion of hybrid individuals. (A) Mantel correlation test for all *P. brachyphona* showed significant correlation (r). The two clusters of points represent comparisons within and between genetic clusters (Northern and Southern). (B) Significant correlations were also observed for each cluster separately (Northern = black, Southern = gray).

with $F_{ST} = 0.57$ (95% CI: 0.567–0.580). Using BIC to test for further differentiation within the Northern cluster also suggested the existence of a single group ($K = 1$, BIC = 129.6 vs. $K = 2$, BIC = 129.9). Similarly, within the Southern cluster, the lowest BIC was observed for $K = 1$ ($K = 1$, BIC = 117.5 vs. $K = 2$, BIC = 118.0). Hence, no additional groups were defined within the Northern and Southern clusters (Supplemental Fig. 3; see Data Accessibility).

Tests of isolation-by-distance.—The Mantel test for correlation between genetic and geographic distances showed a pattern of isolation-by-distance among our samples ($r = 0.76$, $P = 0.001$). Nevertheless, inspection of pairwise comparisons of genetic and geographic distances yielded two separate point clouds (Fig. 4A), suggesting more genetic differentiation than expected solely under isolation-by-distance. A Mantel test for the Northern DAPC cluster yielded evidence of isolation-by-distance ($r = 0.58$, $P = 0.002$; Fig. 4B). Similarly, the Mantel test for the Southern DAPC cluster supported isolation-by-distance to explain divergence among individuals ($r = 0.69$, $P = 0.001$; Fig. 4B).

Morphological variation between the clades of *P. brachyphona*.—The PCA of morphometric variables showed almost complete overlap among individuals from the Northern and Southern clades (Fig. 5). Subtle morphological differences were observable in PC1 (explained variance ~26.8%) due to mostly to FoL, TL, HL, and FL eigenvectors, with significant differences only observed in FoL (average FoL North = 13.64 mm vs. South = 12.96 mm, $P = 0.001$) and HL (average HL North = 8.40 mm vs. South = 8.42 mm, $P = 0.009$; Supplemental Table 4; see Data Accessibility). Permutation tests also showed significant differences for HW (average HW North = 9.60 mm vs. South = 9.55 mm, $P = 0.017$) and EW (North = 3.05 mm vs. South = 3.12, $P = 0.001$; Supplemental

Table 4; see Data Accessibility). It should be noted that well-known changes in size and shape during fluid preservation of voucher specimens (Simmons, 2014) could introduce morphological variation within and/or between species, thus either enhancing or obscuring real biological differences.

Species and population-specific distribution models.—After adding records from GBIF, our data set included 228 occurrences of *P. brachyphona*. Species distribution models fitted with MaxEnt showed a high elevation distribution along the Appalachian Mountains in the eastern U.S., ranging from southwestern Pennsylvania to central Alabama (Fig. 6A). Elevation contributed 19.8% to the combined species model's predictive power, followed by temperature during the driest trimester (~September–November) contributing 17.2%. Precipitation in the warmest trimester (~June–August) and temperature of wettest trimester (~April–July) contributed 15.6% and 10.9% respectively. Vegetation type contributed 16.8% to the prediction (Table 4).

The clade-specific models showed that Northern *P. brachyphona* inhabits southwestern Pennsylvania to Tennessee and northern Alabama (Fig. 6B). The Southern clade is distributed from central Alabama up to northwestern Georgia and southwestern North Carolina, possibly into southeastern Tennessee (Fig. 6C). For the model of Northern *P. brachyphona*, the highest contribution came from vegetation type (47.8%), followed by elevation (19.5%) and temperature during the driest trimester (10.4%). The variables with the highest contribution to the Southern clade model were temperature of wettest trimester (25.7%), precipitation during the driest trimester (19.8%), and temperature during the driest trimester (27.0%, Table 4).

Clade-level ecological niche description and niche overlap.—In the predicted niche of Northern *P. brachyphona*, the predom-

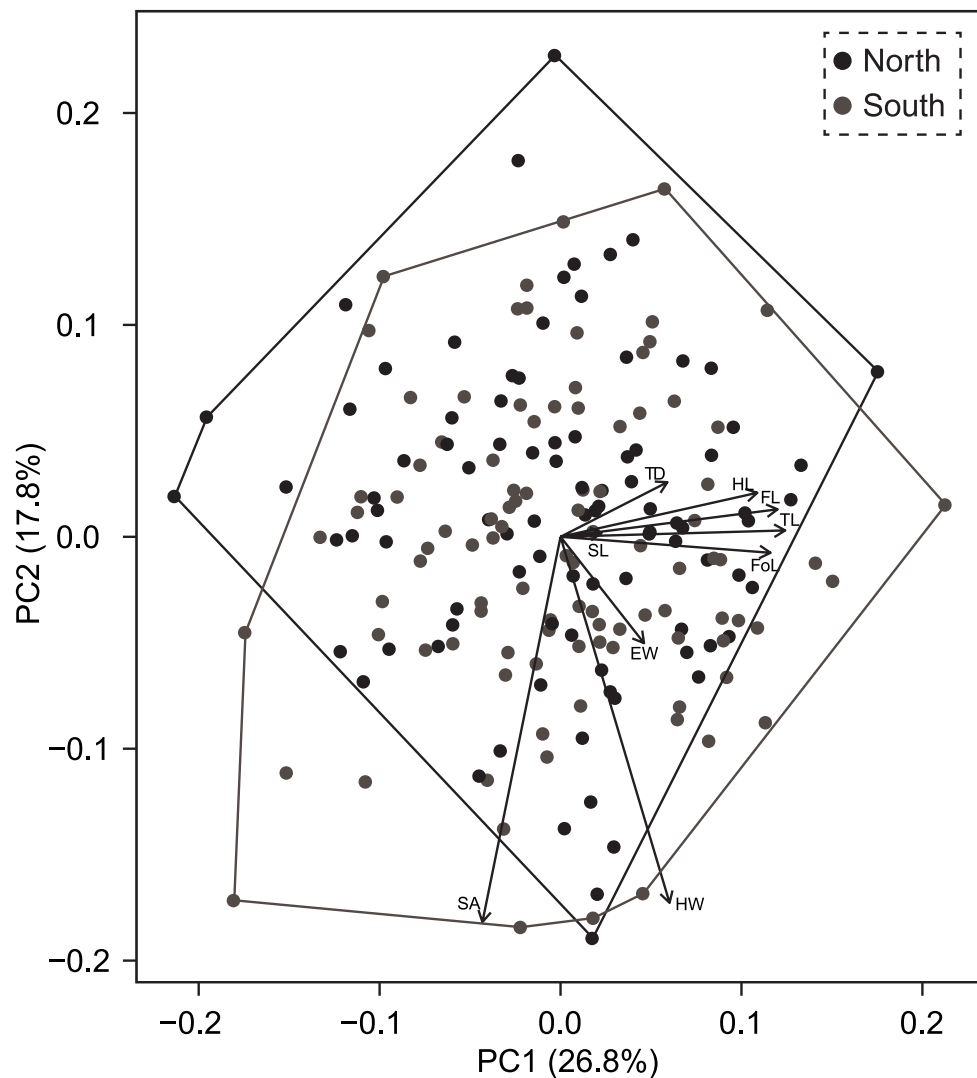


Fig. 5. Principal component analysis plot based on residuals from regressions of each morphometric variable against snout-vent length. Abbreviations for the labels on the PC loadings (arrows) are the same as in the text (see Materials and Methods). Convex hulls are shown for each clade.

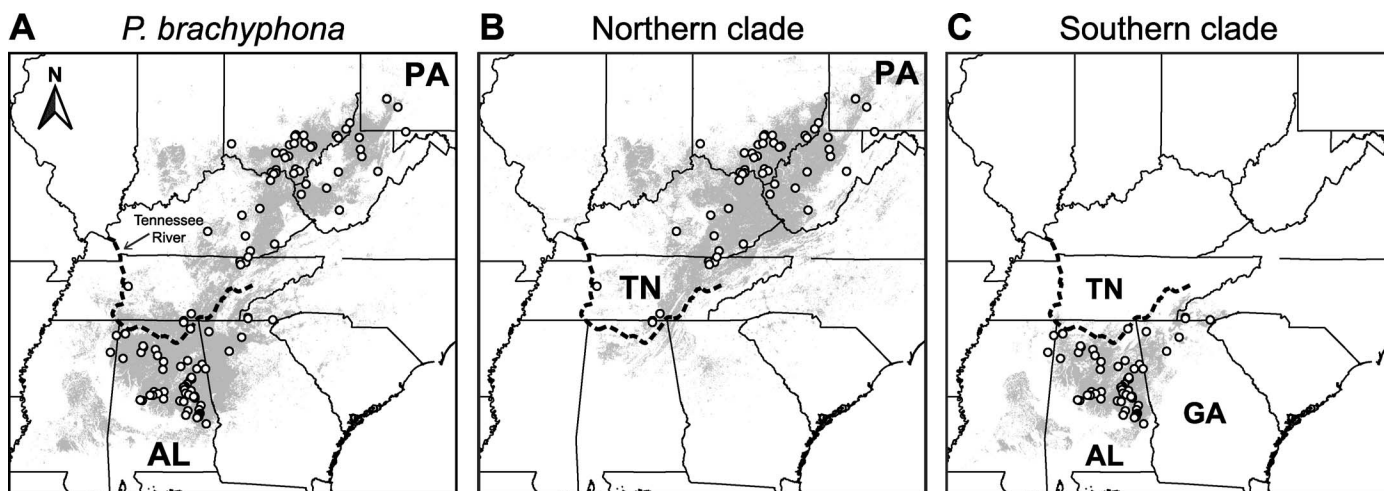


Fig. 6. Maximum entropy species distribution models (SDMs) for all *P. brachyphona* (A), Northern (B), and Southern clades (C). Models represent average probability of occurrence based on ten replicates. We applied a 10th percentile threshold rule to the predicted suitability, thus gray pixels in these maps represent suitable habitat. Hollow circles show the location of occurrence records used in the models, and the dashed line indicates the position of the Tennessee River.

Table 4. Variables with the highest contribution (%C > 10) to the predictive power of the MaxEnt distribution models for *P. brachyphona* and its Northern and Southern clades. The range of values for which the predicted occurrence was higher than 50% is shown. Results of model validation were assessed by using the Akaike Information Criteria (AIC) and its standard deviation.

Variable	<i>P. brachyphona</i>		Northern clade		Southern clade	
	%C	<i>P</i> > 50	%C	<i>P</i> > 50	%C	<i>P</i> > 50
Elevation (masl)	19.8	229.7–667.6	19.5	231.8–830.7	6.9	105.8–326.8
Mean temperature of driest trimester (Bio9, °C)	17.2	–0.8–23.0	10.4	–1.3–0.4	27.0	20.7–23.0
Existing vegetation type	16.8	*	47.8	*	6.0	*
Precipitation of warmest trimester (Bio18, mm)	15.6	335.0–355.1	5.1	295.1–345.2	5.7	337.5–370.9
Mean temperature of wettest trimester (Bio8, °C)	10.9	0.4–20.1	2.2	0.4–21.1	25.7	0.4–10.4
Precipitation of driest trimester (Bio17, mm)	2.1	264.0–507.6	0.5	195.4–239.9	19.8	269.1–507.6
Model AIC (standard deviation)	0.90 (0.03)		0.92 (0.04)		0.97 (0.02)	

* For Existing vegetation types, please refer to Supplemental Table 6 (see Data Accessibility).

inant vegetation was classified within the Eastern cool temperate ruderal/deciduous, South-Central mesophytic, and Allegheny/Cumberland dry oak forests (Supplemental Table 5; see Data Accessibility). In addition, Northern clade *P. brachyphona* was predicted to inhabit areas occurring at elevations from ~230–830 masl, and with average temperatures around 0°C during the driest months of the year (Fig. 7, Table 4).

In the case of the Southern clade, frogs were predicted to occur in areas where the mean temperature ranged from 0–10°C during the wettest trimester, precipitation between 270–500 mm, and temperature around 22°C during the driest trimester (Fig. 7, Table 4). In contrast to northern *P. brachyphona*, our model predicted the Southern clade to occur in mixed evergreen and deciduous forests, with pines being a common element in these vegetation categories. Common forest categories for the Southern clade SDM included the Southern piedmont dry pine forest, East Gulf coastal plain dry upland hardwood forest, and the Central interior and Appalachian riparian forest (Supplemental Table 5; see Data Accessibility). The Southern and Northern clade habitats shared the Allegheny/Cumberland dry oak forest category. Our models also predicted suitable habitat for Southern clade frogs to exist on elevations ranging from 100–320 masl (Supplemental Table 5; see Data Accessibility).

The background tests for niche overlap tests using Schoener's *D* and Warren's *I* showed that environmental

models were significantly distinct. Comparing the *D* and *I* estimates from the Northern clade model with a distribution of the same estimates from models based on random points from the Southern clade yielded no niche overlap for *D* ($DNORTH = 0.22$ vs. $DDIST = 0.62$, $P < 0.05$), nor for *I* ($INORTH = 0.47$ vs. $IDIST = 0.86$, $P < 0.05$; Fig. 8A, B). The complementary test (South vs. North random distribution) also resulted in no overlap based on *D* ($DSOUTH = 0.22$ vs. $DDIST = 0.37$, $P < 0.05$) or *I* ($ISOUTH = 0.48$ vs. $IDIST = 0.66$, $P < 0.05$; Fig. 8C, D). Response curves from our species-level model of *P. brachyphona* showed bimodal distributions for two of the five variables with the highest contributions (Supplemental Fig. 4, Supplemental Table 5; see Data Accessibility), which also supports the ecological divergence between Northern and Southern clades.

Divergence of acoustic signals within *P. brachyphona*.—Our randomization tests showed significant differences for pulse rate (PR) and dominant frequency peak (DFP) between *P. brachyphona* recorded in Tennessee (Northern clade) and Alabama (Southern clade). Mean PR for Tennessee was 84.2 pulses/s and 88.5 pulses/s for Alabama (mean diff = –4.3 pulses/s, $P < 0.01$). Mean DFP was 2,456.3 Hz for Tennessee and 2,716.3 Hz for Alabama (mean diff = –260 Hz, $P < 0.01$). We did not find significant differences in PN between Tennessee (mean PN = 25.0 pulses) and Alabama (mean PN = 24.5 pulses) according to our randomization tests (Fig. 9).

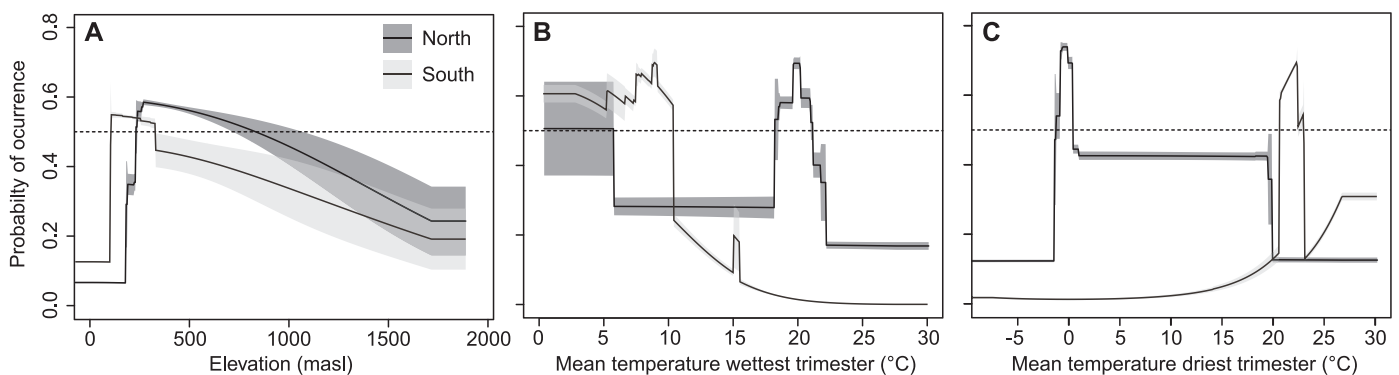


Fig. 7. Response curves of variables with highest contribution (>10%) to the Northern (black line, dark gray shadow) and Southern (gray line, light gray shadow) clade SDMs. The solid lines represent average probability of occurrence based on ten model replicates, while shadowed areas equal to \pm standard deviation. The dotted line indicates a 50% occurrence probability, with environmental values above this threshold indicating suitable habitat. Each clade shows a peak of habitat suitability (>50% occurrence probability) at different values of each variable, suggesting ecological divergence.

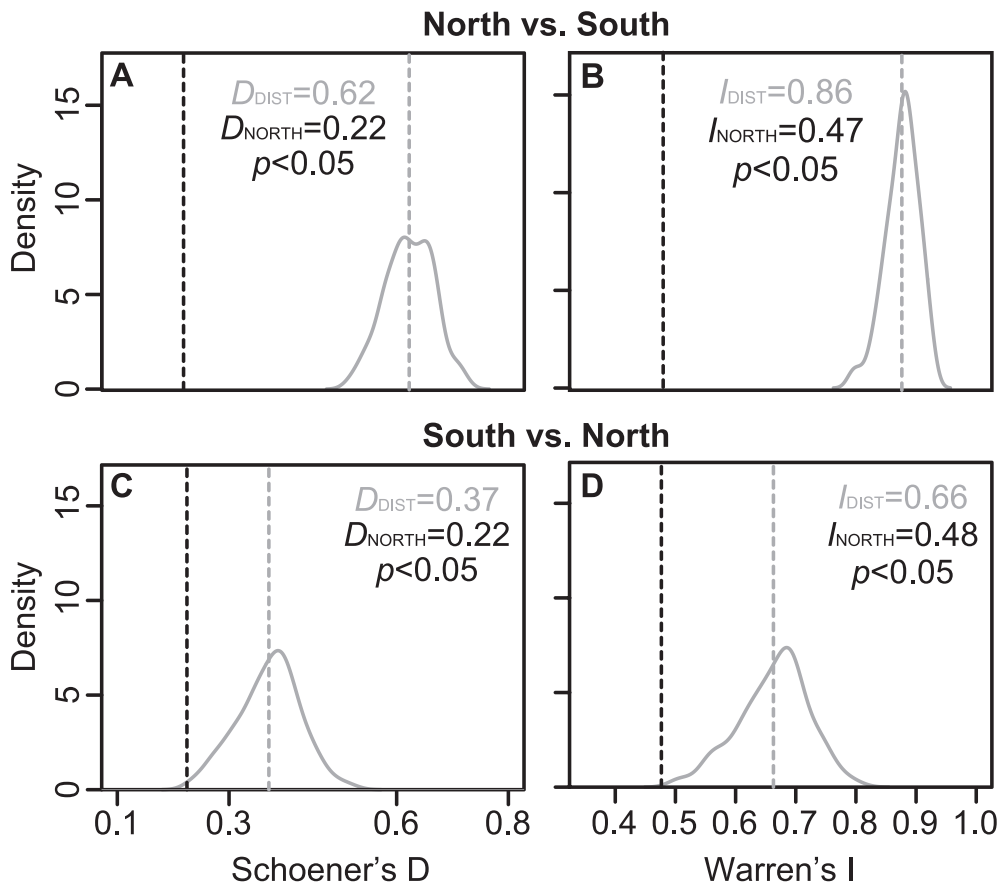


Fig. 8. The distribution (solid gray line) and mean (gray dashed line) of D and I (A, B) niche overlap estimates obtained from MaxEnt models, originating from randomly selecting occurrences (and associated environmental values) in the Southern population. Asymmetric background tests were used to compare these distributions with the empirical estimate from the Northern population (black dashed line). The same procedure was carried out for the reciprocal comparison, Southern vs. Northern (C, D). In both cases, the empirical estimates significantly differed from the randomized distributions, suggesting the absence of niche overlap.

Our t-tests performed for the same variables showed agreement with the randomization tests. Differences were found in PR ($t = 3.0$, $P = 0.007$) and DFP ($t = 3.6$, $P = 0.002$), but not for PN ($t = -0.8$, $P = 0.452$) between Tennessee and Alabama.

Is *P. brachyphona* more than one species?—In light of our results, we contend that the taxonomic status of the Northern and Southern clades of *P. brachyphona* should be updated. The arguments that support splitting this taxon and recognizing both clades at the species level are: (1) Northern and Southern clades show strong genetic divergence, which is indicated by the monophyly of each clade (supported also by Bayes factor delimitation), high F_{ST} , clear genetic clustering by clade, and correlation of genetic structure with geography. The high genetic divergence leads us to think these clades are allopatric as they occur on either side of the Tennessee River. (2) There is evidence of ecological divergence as observed in species distribution models with differences related to vegetation and climatic variables; however, the evidence points to this being an event of allopatric speciation. This result is also concordant with the geographic separation provided by the Blue Ridge Mountains and surrounding high elevation areas. Finally, (3) there are significant differences between clades in regard to acoustic signals, which are critical for species recognition in frogs. We do not claim that differences in call preclude hybridization (which occurs with *P. feriarum*); however, differences in acoustic signals can further develop into strong prezygotic barriers. Given these multiple lines of evidence, we therefore propose the split of *P. brachyphona* and the elevation of the Southern clade to the species level. The type locality of *P.*

brachyphona is “in west Pennsylvania, near the Kiskiminitas River” of Armstrong or Westmoreland County, Pennsylvania, USA (Cope, 1889; Frost, 2020), which occurs within the range of the Northern clade. Thus, populations from the geographic area of the Northern clade (IN, KY, OH, PA, WV, TN) retain the name *P. brachyphona* and the Southern clade receives a new name. The type locality of the new species is assigned to Hale County, Alabama (see below; Fig. 3B). This site was chosen because we obtained a reasonable sized collection of vouchers, tissues, morphological measurements, and acoustic recordings from this site ($n = 10$) for characterizing the new species.

***Pseudacris collinsorum*, new species**

urn:lsid:zoobank.org:act:E063C1D5-54CD-4D17-987B-6552CE3BDE50

Collinses' Mountain Chorus Frog

Figures 10–12

Holotype.—UF 190162 (field number: ECM7533; Fig. 10), adult male, USA, Alabama, Hale County, side of County Road 49 near intersection with State Road 25, 32.90902°N, 87.44312°W, Emily Moriarty Lemmon, 3 March 2011.

Paratypes.—UF 190163–190171 (field numbers: ECM7534–ECM7542), collected on the same date as the holotype; UAHC 15645 (field number: JA-06-01), collected on January 2006. All paratypes collected from two sites at the holotype's locality separated by ~300 m.

Diagnosis.—Advertisement call of *P. collinsorum* shows a faster pulse rate (mean = 88.5 pulses/s) and higher peak dominant

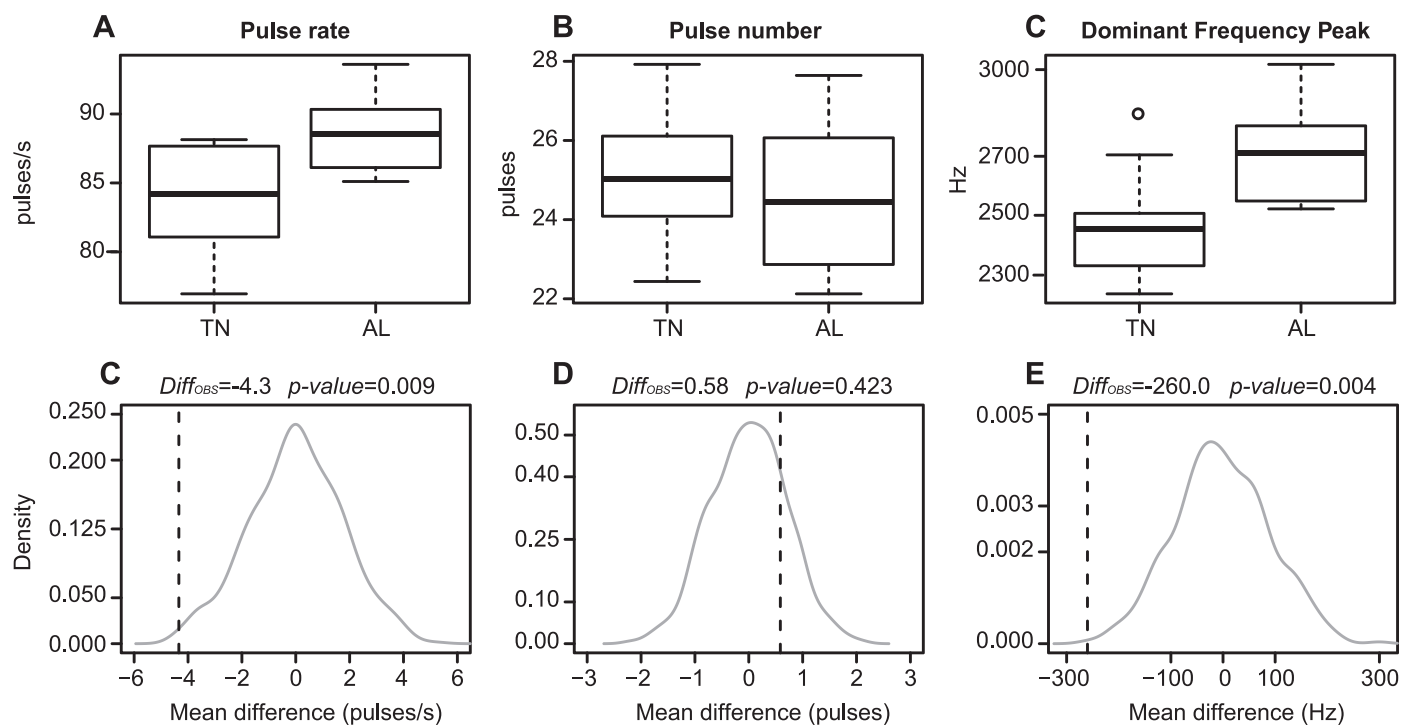


Fig. 9. Differences in pulse rate (PR), number (PN), and dominant frequency peak (DFP) in acoustic signals recorded in *P. brachyphona* from Tennessee (TN) and Alabama (AL). Locality-specific distributions of PR, PN, and DFP (A–C). The thick bar in these boxplots represents mean value. Lower and upper edges of each box are 25th and 75th quantile, respectively, and lower and upper whiskers represent the minimum and maximum limits of the interquartile range. Outliers are represented as hollow points. Randomization tests (1,000 reps) were performed for each of these variables (D–E), yielding significant differences for PR and DFP between Tennessee and Alabama, but not for PN.

frequency (mean = 2,716.3 Hz) than its sister species *P. brachyphona* (mean = 84.2 pulses/s and mean = 2,456.3 Hz, respectively; Fig. 9). Both species ranges are mostly defined by Appalachian Mountains; however, *P. collinsorum* is separated from *P. brachyphona* by the Tennessee River and the southern portion of the Blue Ridge Mountains. The geographic separation is supported by genetic data showing *P. collinsorum* as a divergent lineage with respect to *P. brachyphona* (Figs. 2–4). Anecdotal evidence suggests that external color pattern is more variable in *P. collinsorum* compared to *P. brachyphona*; the former species may possess the “inverted parentheses” dorsal stripe pattern commonly seen in *P. brachyphona*, but it frequently exhibits broken stripes or even lacks dorsal pattern altogether (EML, pers. obs.; Figs. 10, 11).

Description of holotype.—Adult male, SVL = 23.54 mm; snout is rounded in dorsal and ventral views with HL = 8.08 mm and HW = 9.15 mm. Eye to nostril distances (SL = 2.84) form an almost equilateral triangle with separation between eyes. Eye width and tympanum diameter are 2.79 and 2.01 mm, respectively. Forelimbs and hindlimbs are thin, but the latter are long with FL = 12.26 mm and TL = 14.07 mm. Hindlimb fingers are slender, and feet are long with FoL = 12.07 mm. Ventral coloration is light, with darker pigmentation under the vocal sac area. Pigmentation is also visible under feet and hands. The preserved specimen shows a uniform gray background coloration, with brown transverse stripes on the hindlimbs. Smaller, discontinuous bands are present on the forelimbs. Brown spots create patches along the canthus rostralis. Spots also create lines between the eyes and posteriorly creating a “T” shape. Two broad, spotted, and

irregular stripes merge anteriorly and run separate posteriorly resembling an inverted “U.” A solid brown band runs from each tympanum towards the snout where they merge.

Distribution and ecology.—*Pseudacris collinsorum* inhabits the southernmost portion of the Appalachian Mountains on the Piedmont, Ridge and Valley, Plateau regions, and adjacent northern Coastal Plain. The species does not occur further north than the southern portion of the Blue Ridge Mountains and the Tennessee River. The distribution of *P. collinsorum* includes the northern half of the state of Alabama, south to the Tennessee River, northeast corner of Mississippi, northwest Georgia, and southwestern corner of North Carolina. Compared to *P. brachyphona*, this species inhabits lower elevations with species distribution models indicating the highest suitability as low as 100 masl. According to the SDMs, *P. collinsorum* is associated with habitats such as those in the Southern Piedmont dry pine forest, East Gulf dry upland hardwood forest, and southern Ridge and Valley/Cumberland dry calcareous forest (Supplemental Table 5; see Data Accessibility). These habitats contain dry to dry-mesic forests primarily dominated by pine and oak species. *Pseudacris collinsorum* is associated with areas where precipitation during the driest season is relatively high (~260–500 mm), which probably allows for their survival in predominantly drier habitats. Suitable habitat for *P. brachyphona* is generally richer in tree diversity and deciduous species are common (*Quercus*, *Carya*, and *Acer* spp.). Those forests are more mesic than in the habitat of *P. collinsorum* and fall into the South-Central Interior mesophytic, Eastern cool temperate ruderal, and Northern-Central hardwood and conifer forest types (Supplemental Table 5; see

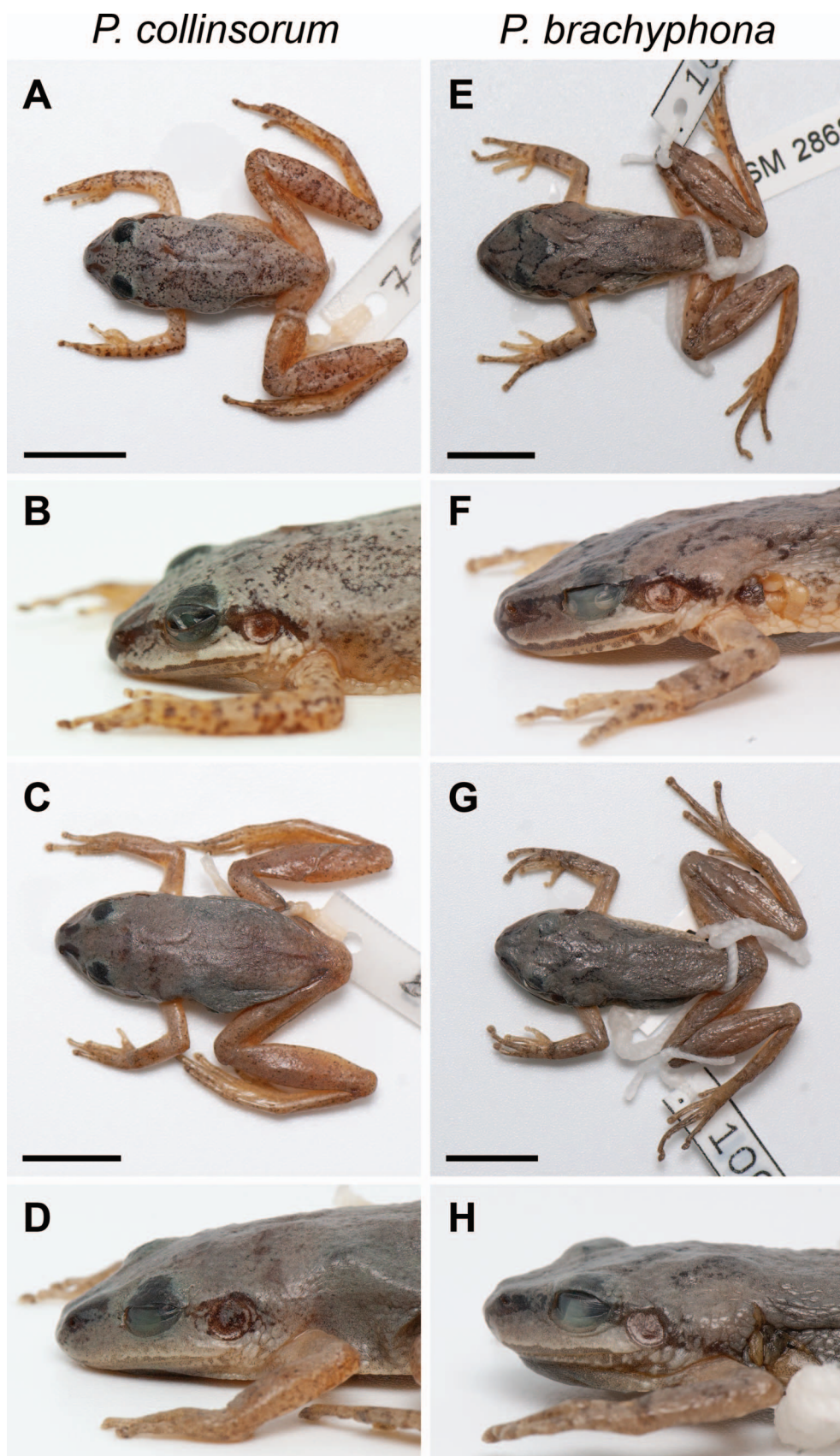


Fig. 10. Dorsal and lateral views of type specimens of *P. collinsorum* (A–D) and *P. brachyphona* (E–H). (A–B) Male *P. collinsorum* from Hale County, Alabama (UF 190162). (C–D) Male *P. collinsorum* from Hale County, Alabama (UF 190167). (E–F) Female *P. brachyphona* from Preston County, West Virginia (NCSM 100109). (G–H) Male *P. brachyphona* from Preston County, West Virginia (NCSM 100110). Black bars equal to 1 cm. For a color version of this figure, please refer to the online version of this article.



Fig. 11. Live specimens of *P. collinsorum* (left, photo by EML) from Lawrence County, Alabama and *P. brachyphona* (right, photo by Suzanne Collins) from Harrison County, West Virginia. Specimens of *P. collinsorum* often lack a distinct dorsal coloration pattern. For a color version of this figure, please refer to the online version of this article.

Data Accessibility). Compared to *P. brachyphona*, temperatures in suitable habitats for *P. collinsorum* are warmer during the driest season (*P. collinsorum*: 20–23°C vs. *P. brachyphona*: ~0°C), but colder during the wettest season (*P. collinsorum*: 0–10°C vs. *P. brachyphona*: 18–21°C).

Advertisement call.—Male *Pseudacris collinsorum* produce a fast PR call compared to other members of the trilling frog clade within *Pseudacris* (Fig. 12; Lemmon, 2007; Banker et al., 2020). The PR of this species (mean = 88.5 pulses/s) exceeds that of its sister taxon, *P. brachyphona* (mean = 84.2 pulses/s). *Pseudacris collinsorum* also have a higher-pitched call (DFP, mean = 2,716 Hz), than *P. brachyphona* (mean = 2,456 Hz).

Etymology.—The species is named after husband–wife team Joseph T. and Suzanne L. Collins. Joseph Collins (1939–2012) was a renowned American herpetologist, author of wildlife books, and editor at the Museum of Natural History at the University of Kansas, who made major contributions to the

study of U.S. amphibians and reptiles for more than 40 years. Collins was also co-founder of three herpetological organizations (Society for the Study of Amphibians and Reptiles, Center for North American Herpetology, and the Kansas Herpetological Society). Suzanne Collins is a professional wildlife photographer specializing in reptiles and amphibians, who has contributed thousands of photographs to dozens of print and online publications. The decision to name the new species after the Collinses was made after Joseph Collins' demise in January 2012. Prior to his death, Joe contributed substantially to this paper by making intellectual contributions and coordinating the acquisition of tissue samples and specimens.

DISCUSSION

Previously, Lemmon et al. (2007a) highlighted the need for analysis of additional lines of evidence to determine whether the Mountain Chorus Frog, *P. brachyphona*, included cryptic

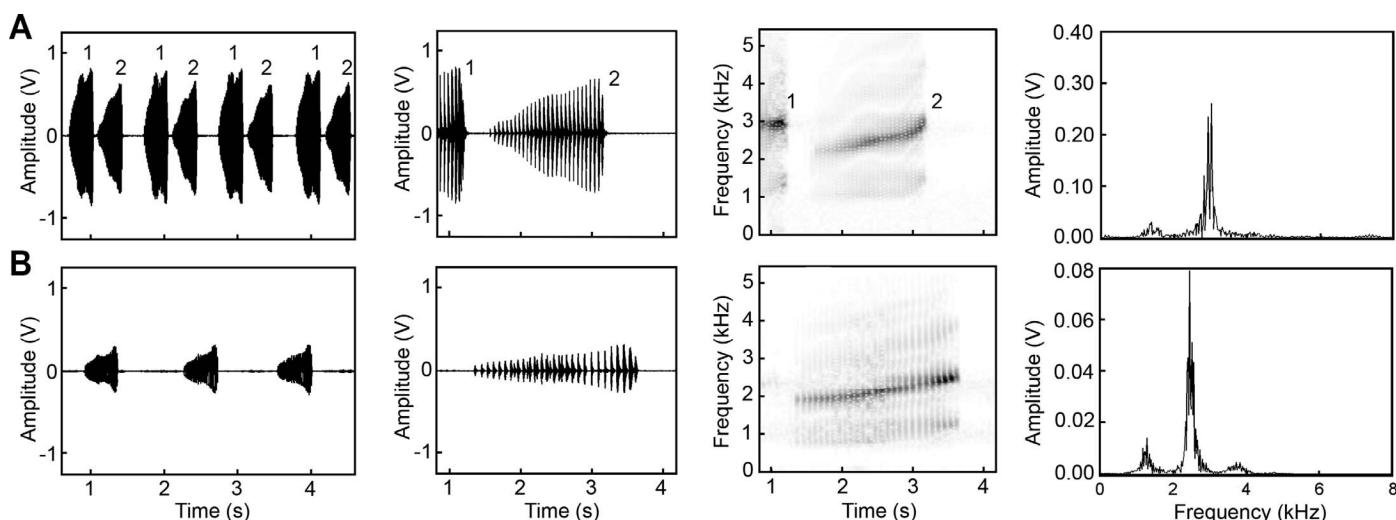


Fig. 12. Oscillograms (first and second columns), spectrograms (third column), and power spectra (fourth column) of advertisement calls from (A) *P. collinsorum* (recorded at 10.2°C) and (B) *P. brachyphona* (recorded at 12.6°C). The second columns represent a single call extracted from those in the first column. In the case of *P. collinsorum* (A), two males were recorded while duetting and are identified with numbers.

lineages. In this study, we have not only provided evidence from the behavior and ecology of this species, but also exploited the power of targeted hybrid enrichment of genome-wide sequence data to define genetic breaks (Lemmon et al., 2012; Lemmon and Lemmon, 2013). In agreement with the mitochondrial data set from Lemmon et al. (2007b), our nuclear phylogenetic analysis supported a clear split between Northern and Southern clades of *P. brachyphona*. Both clades were statistically supported by coalescent and maximum likelihood methods. Genetic clustering using >21K SNPs also supported the existence of two population clusters with significant genetic divergence, for which divergence is not explained simply by an isolation-by-distance process. There was, however, evidence of hybridization with the congeneric *P. feriarum*. Finally, we found evidence for divergence in acoustic signals between the two clades (based on one recording location per clade), as well as divergence in their ecological niches as they showed almost no overlap. We acknowledge that the genetic and acoustic data sets are somewhat limited in sample size; however, the agreement shown by the different lines of evidence led us to propose the reconsideration of the taxonomic status of these two clades and to describe a new species of chorus frog from the southern Appalachian Mountains, *P. collinsorum*.

Genetic evidence supporting divergence within *P. brachyphona*.—Previous studies on the phylogenetic relationships within *Pseudacris* pointed to the necessity of additional genetic data to support a split within *P. brachyphona* (Lemmon et al., 2007b). Based on mitochondrial sequences, Lemmon et al. (2007b) found two well-supported clades geographically corresponding to the Northern and Southern portions of the distribution of *P. brachyphona*. Our phylogenetic analysis based on nuclear sequences were consistent with this finding. The Northern clade, referred to henceforth as the Appalachian Mountain Chorus Frog (*P. brachyphona*), was represented in our phylogenetic analysis by samples originating from the states of Ohio, West Virginia, Kentucky, Tennessee, and northern Alabama. The Southern clade, referred to hereafter as Collinses' Mountain Chorus Frog (*P. collinsorum*), included individuals south of the Tennessee River mostly from Alabama and Georgia. Although more comprehensive sampling is required to accurately detect hybridization between these species, no evidence for admixture was detected in our data set (Fig. 3A, B), and a high coefficient of differentiation between species was observed ($F_{ST} > 0.5$). This pattern suggests the existence of a significant barrier to gene flow, which we propose may be the Tennessee River and adjacent higher elevations of the Blue Ridge Mountains.

Although *P. collinsorum* reaches into the lower elevation Piedmont of the southeastern U.S., both *P. brachyphona* and *P. collinsorum* are primarily distributed throughout the Appalachian Mountains, hence their common names (Mountain Chorus Frogs). Nevertheless, within this range, these species are not known to occur in the Great Smoky Mountains (Hoffman, 1980). Since divergence between the Mountain Chorus Frogs and their sister taxon, *P. brimleyi*, occurred in the Pliocene well after the uplift of the Appalachians (Lemmon et al., 2007a), we rather propose that the dynamism of climatic regimes during the Pleistocene and the concomitant generation of geographic barriers (Mayden, 1988; Rissler and Smith, 2010) resulted in divergence

between the two species of Mountain Chorus Frogs. Because the phylogeographic break separating *P. brachyphona* and *P. collinsorum* coincides with the Tennessee River, it is possible that divergence between Mountain Chorus Frogs occurred after formation of this river. At the beginning of the Pleistocene, the Tennessee River formed from the confluence of the hypothetical Appalachian River and the Lower Tennessee River (Mayden, 1988; Kozak et al., 2006). This split adds an additional example to the many documented genetic breaks occurring in the vicinity of the Cumberland Plateau (Corser, 2008).

Further support for the idea that a barrier contributed to the genetic division observed between *P. brachyphona* and *P. collinsorum* comes from our observation that isolation-by-distance did not explain the break. Our analysis shows that divergence is higher between specimens of each species than between those within each species. We found that isolation by distance occurs within each species, as is expected for organisms with low vagility such as amphibians (Hillman et al., 2013).

Evidence of hybridization.—Although hybridization between *P. brachyphona* and *P. collinsorum* was not observed in our data set, the fact that we found evidence of hybridization between *P. brachyphona* and the more distantly related *P. feriarum* suggests that it could possibly occur between the two mountain chorus frogs in areas where they may overlap (Fig. 3). In fact, Lemmon et al. (2007a) previously observed evidence of introgression between *P. brachyphona* and *P. feriarum*, and between *P. collinsorum* and *P. feriarum* based on mitochondrial data. This finding is not surprising since most species in the trilling chorus frog clade (*sensu* Moriarty and Cannatella, 2004) occasionally hybridize with other close relatives at the periphery of their ranges (Lemmon et al., 2007a, 2007b). Furthermore, hybrids between *P. brachyphona* and *P. feriarum* have been created and raised to sexual maturity under laboratory conditions, suggesting that hybrids could also reach the same stage in nature (Mecham, 1965). Nevertheless, it should be noted that a larger sampling is required, especially throughout the Tennessee River basin, to accurately assess the extent of hybridization between *P. collinsorum* and *P. brachyphona*, if it occurs.

Niche divergence between clades of *P. brachyphona*.—As expected merely from the latitudinal differences between *P. brachyphona* and *P. collinsorum*, niche overlap tests yielded no similarity among SDMs. *Pseudacris brachyphona* has been a species traditionally associated with areas in proximity to woodlands (Barbour, 1957; Forester et al., 2003), which holds true for both clades according to our SDMs. Nevertheless, with respect to vegetation some differences were observed. Predicted habitat for *P. brachyphona* included forest categories with higher overall diversity of deciduous trees in which oaks (*Quercus* spp.), maples (*Acer* spp.), and hickories (*Carya* spp.) were a dominant element. Our SDMs for *P. collinsorum* showed that forest categories where this species occurs contain a higher richness of pine species than in habitat of *P. brachyphona*. The forest habitats of *Pseudacris collinsorum* were predicted to be generally drier than those of *P. brachyphona*. *Pinus* spp., *Juniperus virginiana*, and oaks were predicted to be common in habitat of *P. collinsorum*.

Response curves of SDMs generated by placing *P. brachyphona* and *P. collinsorum* as a single species showed bimodal

distributions for the mean temperature during the driest and wettest seasons (Supplemental Figure 4; see Data Accessibility). The two habitat suitability peaks reflect the differences in habitat temperature and vegetation between *P. collinsorum* and *P. brachyphona*, and although do not necessarily imply local adaptation and ecological divergence, further research is warranted to test if fitness of each species is conditioned to their own habitat characteristics. It is also noteworthy that geographical overlap between the SDMs was not observed and that the break in distribution approximately aligned with the southern portion of the Blue Ridge Mountains. Although the Tennessee River represents the most likely vicariant barrier leading to divergence of the species, the paleogeographic importance of the Blue Ridge Mountains in the divergence between *P. brachyphona* and *P. collinsorum* merits further study.

Diversification of acoustic signals.—Significant differences in pulse rate and dominant frequency of calls recorded from Tennessee and Alabama suggest the presence of premating reproductive isolation between *P. brachyphona* and *P. collinsorum* (Coyne and Orr, 2004). Although these differences are based on single localities representing each clade, we contend the pattern provides further evidence of the distinctiveness of these species. Even small differences in pulse rate, for example, can be sufficient for frogs to discriminate between species (Platz and Forester, 1988; Gerhardt and Huber, 2002). The differences in dominant frequency, although compelling, are difficult to interpret in the light of unknown factors like size of the frogs, which predicts dominant frequency of the call and which is influenced by ecological selection (Lemmon, 2009). Pulse rate, however, is known to be critical for species recognition in other *Pseudacris*, and divergence of this call character, even among populations of the same species, can lead to reproductive isolation and incipient speciation (Lemmon, 2009).

Summary.—Our study supports the elevation of the Southern clade of *P. brachyphona* (*sensu* Lemmon et al., 2007b) to species level, and we name this new species Collinses' Mountain Chorus Frog (*P. collinsorum*). The diagnosis of this new species is supported by phylogenetic data, population genetic data, acoustic mating signals, and ecological information. *Pseudacris collinsorum* occurs at elevations of 100–320 masl across northern Alabama, northeastern Mississippi, and northwestern Georgia in the U.S.

DATA ACCESSIBILITY

Supplemental material, data set, and analysis parameter files are available at <https://www.copeiajournal.org/ch2020009>.

ACKNOWLEDGMENTS

We are grateful to Alyssa Bigelow Hassinger, Will Bird, Seth Bishop, David Cannatella, Suzanne Collins, Jim Godwin, Matt Greene, Marcos Gridi-Papp, Mark Gumbert, Kevin Hamed, Aubrey Heupel, Richard Highton, John Jensen, Eric Juterbock, Zack Lange, Alan Lemmon, John MacGregor, Bruce Means, Thomas Pauley, John Stoklosa, Missy Toncray, John Vanek, and Josh Young for their help in locating and collecting samples used in this study. We thank the Texas Natural History Collection (University of Texas at Austin

Biodiversity Center), the Fort Hays State University's Sternberg Museum of Natural History, University of Florida's Museum of Natural History, Auburn University Museum of Natural History, Ohio State University's Museum of Biological Diversity, North Carolina Museum of Natural Sciences, and the Smithsonian National Museum of Natural History and their respective collections managers Travis LaDuc, Curtis Schmidt, Coleman Sheehy, David Laurencio, Tamaki Yuri, Bryan Stuart, and Addison Wynn for their prompt response and loan of specimens. We are especially grateful to the museum curators for their continuous help. We are thankful to Darrel Frost for helpful comments on an earlier version of this manuscript. Multiple collection permits were issued by the departments of natural resources of each state where capture was made and at different times beginning in the year 2000. Institutional Animal Care and Use Committee (IACUC) approved protocols to conduct this study (Protocol #1747). This work was supported by the National Science Foundation (DEB#1120516, DEB#1214325, DEB#1314449, DEB#1415545, and DEB#1416134).

LITERATURE CITED

- Banker, S. E., A. R. Lemmon, A. B. Hassinger, M. Dye, S. D. Holland, M. L. Kortyna, O. E. Ospina, H. Ralicki, and E. M. Lemmon. 2020. Hierarchical hybrid enrichment: multi-tiered genomic data collection across evolutionary scales, with application to chorus frogs (*Pseudacris*). *Systematic Biology* 69:756–773.
- Barbour, R. W. 1957. Observations on the Mountain Chorus Frog, *Pseudacris brachyphona* (Cope) in Kentucky. *The American Midland Naturalist* 57:125–128.
- Barbour, R. W., and E. Walters. 1941. Notes on the breeding habits of *Pseudacris brachyphona*. *Copeia* 1941:90–91.
- Barrow, L. N., A. R. Lemmon, and E. M. Lemmon. 2018. Targeted sampling and target capture: Assessing phylogeographic concordance with genome-wide data. *Systematic Biology* 67:979–996.
- Barrow, L. N., H. F. Ralicki, S. A. Emme, and E. M. Lemmon. 2014. Species tree estimation of North American Chorus Frogs (Hylidae: *Pseudacris*) with parallel tagged amplicon sequencing. *Molecular Phylogenetics and Evolution* 75:78–90.
- Baumgartner, J., P. Wilson, and M. Esperon-Rodriguez. 2017. rmaxent: tools for working with MaxEnt in R. <https://github.com/johnbaums/rmaxent>
- Bee, M. A. 2004. SoundRuler acoustical analysis: a free, open code, multi-platform sound analysis and graphing package. *Bioacoustics* 14:171–178.
- Bouckaert, R., T. G. Vaughan, J. Barido-Sottani, S. Duchêne, M. Fourment, A. Gavryushkina, J. Heled, G. Jones, D. Kühnert, N. De Maio, M. Matschiner, F. K. Mendes, N. F. Müller, H. A. Ogilvie . . . A. J. Drummond. 2019. BEAST 2.5: an advanced software platform for Bayesian evolutionary analysis. *PLoS Computational Biology* 15:e1006650.
- Bryant, D., R. Bouckaert, J. Felsenstein, N. A. Rosenberg, and A. RoyChoudhury. 2012. Inferring species trees directly from biallelic genetic markers: bypassing gene trees in a full coalescent analysis. *Molecular Biology and Evolution* 29:1917–1932.
- Cope, E. D. 1889. *The Batrachia of North America*. Bulletin of the United States National Museum, Washington, D.C.

- Corser, J. D. 2008. The Cumberland Plateau disjunct paradox and the biogeography and conservation of pond-breeding amphibians. *The American Midland Naturalist* 159:498–503.
- Coyne, J. A., and H. A. Orr. 2004. *Speciation*. Sinauer Associates, Sunderland, Massachusetts.
- Degner, J. F., D. M. Silva, T. D. Hether, J. M. Daza, and E. A. Hoffman. 2010. Fat frogs, mobile genes: unexpected phylogeographic patterns for the ornate chorus frog (*Pseudacris ornata*). *Molecular Ecology* 19:2501–2515.
- Dray, S., and A.-B. Dufour. 2007. The ade4 package: implementing the duality diagram for ecologists. *Journal of Statistical Software* 22:1–20.
- Duellman, W. E. 2001. *The Hylid Frogs of Middle America*. Society for the Study of Amphibians and Reptiles, Lawrence, Kansas.
- Ennen, J. R., W. A. Matamoros, M. Agha, J. E. Lovich, S. C. Sweat, and C. W. Hoagstrom. 2017. Hierarchical, quantitative biogeographic provinces for all North American turtles and their contribution to the biogeography of turtles and the continent. *Herpetological Monographs* 31:142–168.
- Evanno, G., S. Regnaut, and J. Goudet. 2005. Detecting the number of clusters of individuals using the software structure: a simulation study. *Molecular Ecology* 14:2611–2620.
- Fick, S. E., and R. J. Hijmans. 2017. WorldClim 2: new 1-km spatial resolution climate surfaces for global land areas. *International Journal of Climatology* 37:4302–4315.
- Forester, D., S. Knoedler, and R. Sanders. 2003. Life history and status of the Mountain Chorus frog (*Pseudacris brachyphona*) in Maryland. *The Maryland Naturalist* 46:1–15.
- Frost, D. R. 2020. *Amphibian Species of the World: an Online Reference*. Version 6.1 (accessed 05/02/2020). Electronic Database accessible at <https://amphibiansoftheworld.amnh.org/index.php>. American Museum of Natural History, New York.
- GBIF (Global Biodiversity Information Facility). 2019. *Pseudacris brachyphona*—GBIF Occurrence Download. <https://www.gbif.org/en/>
- Gerhardt, H. C., and F. Huber. 2002. *Acoustic Communication in Insects and Anurans: Common Problems and Diverse Solutions*. University of Chicago Press, Chicago.
- Green, N. B. 1938. The breeding habits of *Pseudacris brachyphona* (Cope) with a description of the eggs and tadpole. *Copeia* 1938:79–82.
- Green, N. B. 1952. A study of the life history of *Pseudacris brachyphona* (Cope) in West Virginia with special reference to behavior and growth of marked individuals. Unpubl. Ph.D. diss., The Ohio State University, Columbus, Ohio.
- Green, N. B. 1964. Postmetamorphic growth in the mountain chorus frog (*Pseudacris brachyphona*) Cope. *Proceedings of the West Virginia Academy of Sciences* 36:34–38.
- Hamilton, C. A., A. R. Lemmon, E. M. Lemmon, and J. E. Bond. 2016. Expanding anchored hybrid enrichment to resolve both deep and shallow relationships within the spider tree of life. *BMC Evolutionary Biology* 16:212.
- Hedges, S. B. 1986. An electrophoretic analysis of holarctic hylid frog evolution. *Systematic Biology* 35:1–21.
- Hijmans, R. J., and J. van Etten. 2017. raster: geographic data analysis and modeling (Version 2.6-7). <https://cran.r-project.org/web/packages/raster/index.html>
- Hillman, S. S., R. C. Drewes, M. S. Hedrick, and T. V. Hancock. 2013. Physiological vagility: correlations with dispersal and population genetic structure of amphibians. *Physiological and Biochemical Zoology* 87:105–112.
- Hoffman, R. L. 1980. *Pseudacris brachyphona* (Cope). *Catalogue of American Amphibians and Reptiles* 234:1–2.
- Jombart, T. 2008. adegenet: a R package for the multivariate analysis of genetic markers. *Bioinformatics* 24:1403–1405.
- Jones, M. T., S. R. Voss, M. B. Ptacek, D. W. Weisrock, and D. W. Tonkyn. 2006. River drainages and phylogeography: an evolutionary significant lineage of shovel-nosed salamander (*Desmognathus marmoratus*) in the southern Appalachians. *Molecular Phylogenetics and Evolution* 38:280–287.
- Katoh, K., and D. M. Standley. 2013. MAFFT multiple sequence alignment software version 7: improvements in performance and usability. *Molecular Biology and Evolution* 30:772–780.
- Kearse, M., R. Moir, A. Wilson, S. Stones-Havas, M. Cheung, S. Sturrock, S. Buxton, A. Cooper, S. Markowitz, C. Duran, T. Thierer, B. Ashton, P. Meintjes, and A. Drummond. 2012. Geneious Basic: an integrated and extendable desktop software platform for the organization and analysis of sequence data. *Bioinformatics* 28:1647–1649.
- Kozak, K. H., R. A. Blaine, and A. Larson. 2006. Gene lineages and eastern North American palaeodrainage basins: phylogeography and speciation in salamanders of the *Eurycea bislineata* species complex. *Molecular Ecology* 15:191–207.
- Leaché, A. D., M. K. Fujita, V. N. Minin, and R. R. Bouckaert. 2014. Species delimitation using genome-wide SNP Data. *Systematic Biology* 63:534–542.
- Lemmon, A. R., S. A. Emme, and E. M. Lemmon. 2012. Anchored hybrid enrichment for massively high-throughput phylogenomics. *Systematic Biology* 61:727–744.
- Lemmon, E. C. M. 2007. Patterns and processes of speciation in North American Chorus Frogs (*Pseudacris*). Unpubl. Ph.D. diss., The University of Texas, Austin, Texas.
- Lemmon, E. M. 2009. Diversification of conspecific signals in sympatry: geographic overlap drives multidimensional reproductive character displacement in frogs. *Evolution* 63:1155–1170.
- Lemmon, E. M., and A. R. Lemmon. 2013. High-throughput genomic data in systematics and phylogenetics. *Annual Review of Ecology, Evolution, and Systematics* 44:99–121.
- Lemmon, E. M., A. R. Lemmon, and D. C. Cannatella. 2007a. Geological and climatic forces driving speciation in the continentally distributed Trilling Chorus Frogs (*Pseudacris*). *Evolution* 61:2086–2103.
- Lemmon, E. M., A. R. Lemmon, J. T. Collins, J. A. Lee-Yaw, and D. C. Cannatella. 2007b. Phylogeny-based delimitation of species boundaries and contact zones in the Trilling Chorus Frogs (*Pseudacris*). *Molecular Phylogenetics and Evolution* 44:1068–1082.
- Maxson, L. R., and A. C. Wilson. 1975. Albumin evolution and organismal evolution in Tree Frogs (Hylidae). *Systematic Zoology* 24:1–15.

- Mayden, R. L. 1988. Vicariance biogeography, parsimony, and evolution in North American freshwater fishes. *Systematic Biology* 37:329–355.
- McClure, K. A. 1996. Ecology of *Pseudacris brachyphona*: a second look. Unpubl. master's thesis, Marshall University, Huntington, West Virginia.
- Mecham, J. S. 1965. Genetic relationships and reproductive isolation in southeastern frogs of the genera *Pseudacris* and *Hyla*. *The American Midland Naturalist* 74:269–308.
- Meirmans, P. G., and P. H. Van Tienderen. 2004. GENOTYPE and GENODIVE: two programs for the analysis of genetic diversity of asexual organisms. *Molecular Ecology Notes* 4:792–794.
- Meyer, M., and M. Kircher. 2010. Illumina sequencing library preparation for highly multiplexed target capture and sequencing. *Cold Spring Harbor Protocols* 2010:1–10.
- Mitchell, J. C., and T. K. Pauley. 2005. Mountain Chorus Frog, *Pseudacris brachyphona* Cope, 1889, p. 465–466. *In: Amphibian Declines: The Conservation Status of United States Species*. M. Lannoo (ed.). University of California Press, Berkeley, California.
- Morales, N. S., I. C. Fernández, and V. Baca-González. 2017. MaxEnt's parameter configuration and small samples: are we paying attention to recommendations? A systematic review. *PeerJ* 5:e3093.
- Moriarty, E. C., and D. C. Cannatella. 2004. Phylogenetic relationships of the North American Chorus Frogs (*Pseudacris*: Hylidae). *Molecular Phylogenetics and Evolution* 30:409–420.
- Pauly, G. B., O. Piskurek, and H. B. Shaffer. 2007. Phylogeographic concordance in the southeastern United States: the Flatwoods Salamander, *Ambystoma cingulatum*, as a test case. *Molecular Ecology* 16:415–429.
- Phillips, S. J., and M. Dudík. 2008. Modeling of species distribution with Maxent: new extensions and a comprehensive evaluation. *Ecography* 31:161–175.
- Pina-Martins, F., D. N. Silva, J. Fino, and O. S. Paulo. 2017. Structure_threader: an improved method for automation and parallelization of programs Structure, fastStructure and Maverick on multicore CPU systems. *Molecular Ecology Resources* 17:e268–e274.
- Platz, J. E., and D. C. Forester. 1988. Geographic variation in mating call among the four subspecies of the Chorus Frog: *Pseudacris triseriata* (Wied). *Copeia* 1988:1062–1066.
- Powell, R., R. Conant, and J. T. Collins. 2016. *Peterson Field Guide to Reptiles and Amphibians of Eastern and Central North America*. Houghton Mifflin Harcourt, Boston, Massachusetts.
- Pritchard, J. K., M. Stephens, and P. Donnelly. 2000. Inference of population structure using multilocus genotype data. *Genetics* 155:945–959.
- Prum, R. O., J. S. Berv, A. Dornburg, D. J. Field, J. P. Townsend, E. M. Lemmon, and A. R. Lemmon. 2015. A comprehensive phylogeny of birds (Aves) using targeted next-generation DNA sequencing. *Nature* 526:569–573.
- Prunier, R., and K. E. Holsinger. 2010. Was it an explosion? Using population genetics to explore the dynamics of a recent radiation within *Protea* (Proteaceae L.). *Molecular Ecology* 19:3968–3980.
- QGIS Development Team. 2017. QGIS-Open source geographic information system (Version 2.14.19). <https://www.qgis.org>
- R Core Team. 2018. R: a language and environment for statistical computing. R Foundation for Statistical Computing, Vienna, Austria. <https://www.R-project.org/>
- Rissler, L. J., and W. H. Smith. 2010. Mapping amphibian contact zones and phylogeographical break hotspots across the United States. *Molecular Ecology* 19:5404–5416.
- Rokyta, D. R., A. R. Lemmon, M. J. Margres, and K. Aronow. 2012. The venom-gland transcriptome of the eastern diamondback rattlesnake (*Crotalus adamanteus*). *BMC Genomics* 13:312.
- Sabaj, M. H. 2020. Codes for natural history collections in ichthyology and herpetology. *Copeia* 108:593–669.
- Schwartz, A. 1955. The Chorus Frog *Pseudacris brachyphona* in North Carolina. *Copeia* 1955:138.
- Simmons, J. E. 2014. *Fluid Preservation: A Comprehensive Reference*. Rowman & Littlefield, Lanham, Maryland.
- Soltis, D. E., A. B. Morris, J. S. McLachlan, P. S. Manos, and P. S. Soltis. 2006. Comparative phylogeography of unglaciated eastern North America. *Molecular Ecology* 15:4261–4293.
- Stamatakis, A. 2014. RAxML version 8: a tool for phylogenetic analysis and post-analysis of large phylogenies. *Bioinformatics* 30:1312–1313.
- Stöver, B. C., and K. F. Müller. 2010. TreeGraph 2: combining and visualizing evidence from different phylogenetic analyses. *BMC Bioinformatics* 11:7.
- Tang, Y., M. Horikoshi, and W. Li. 2016. ggfortify: unified interface to visualize statistical results of popular R packages. *The R Journal* 8:474–489.
- U.S. Department of Agriculture and U. S. Department of the Interior. 2014. LandFire: Existing Vegetation Type spatial data v1.4.0. <https://www.landfire.gov/index.php>
- Walker, C. 1932. *Pseudacris brachyphona* (Cope), a valid species. *Ohio Journal of Science* 32:379–384.
- Wang, J. 2017. The computer program structure for assigning individuals to populations: easy to use but easier to misuse. *Molecular Ecology Resources* 17:981–990.
- Warren, D. L., N. Matzke, M. Cardillo, J. Baumgartner, L. Beaumont, N. Huron, M. Simões, and R. Dinnage. 2019. ENMTools. <https://github.com/danlwarren/ENMTools>
- Wickham, H. 2016. ggplot2: elegant graphics for data analysis (Version 2.2.1). <https://ggplot2.tidyverse.org>
- Wickham, H., R. François, L. Henry, K. Müller, and others. 2015. dplyr: a grammar of data manipulation (Version 0.4.3). <https://CRAN.R-project.org/package=dplyr>
- Williams, J. W., B. N. Shuman, T. Webb, P. J. Bartlein, and P. L. Leduc. 2004. Late-Quaternary vegetation dynamics in North America: scaling from taxa to biomes. *Ecological Monographs* 74:309–334.
- Wright, A. H., and A. A. Wright. 1949. *Handbook of Frogs and Toads of the United States and Canada*. Comstock Publishing Company, Ithaca, New York.
- Zhang, C., M. Rabiee, E. Sayyari, and S. Mirarab. 2018. ASTRAL-III: polynomial time species tree reconstruction from partially resolved gene trees. *BMC Bioinformatics* 19:153.
- Zhang, C., E. Sayyari, and S. Mirarab. 2017. ASTRAL-III: increased scalability and impacts of contracting low support branches, p. 53–75. *In: Comparative Genomics. Proceedings: 15th International Workshop, RECOMB CG 2017 Barcelona, Spain, October 4–6, 2017*. J. Meidanis and L. Nakhleh (eds.). Springer.