



Evaluating the relationship between white-tailed deer and environmental conditions using spatially autocorrelated data in tropical dry forests of central Mexico

Authors: Yañez-Arenas, Carlos, and Mandujano, Salvador

Source: Tropical Conservation Science, 8(4) : 1126-1139

Published By: SAGE Publishing

URL: <https://doi.org/10.1177/194008291500800418>

Research Article

Evaluating the relationship between white-tailed deer and environmental conditions using spatially autocorrelated data in tropical dry forests of central Mexico

Carlos Yañez-Arenas^{1,2} and **Salvador Mandujano^{3*}**

¹ División de Posgrado, Instituto de Ecología A. C., Carretera Antigua a Coatepec No. 351, El Haya, Xalapa 91070, Veracruz, México.

² Present address: Biodiversity Institute, The University of Kansas, 1345 Jayhawk Blvd, Lawrence, KS 66045

³ Red de Biología y Conservación de Vertebrados, Instituto de Ecología A. C., Carretera Antigua a Coatepec No. 351, El Haya, Xalapa 91070, Veracruz, México.

*Corresponding author: salvador.mandujano@inecol.mx

Abstract

Ordinary least-square (OLS) regression is fundamental to quantitative research in many ecological disciplines. However, spatially explicit methods have recently been proposed that allow the incorporation of spatial autocorrelation into ecological models. We compared the spatial error simultaneous autoregressive model (SAR_{err}) and generalized least squares regression (GLS) with the results of simple and multiple OLS regressions, to analyze the relationship between white-tailed deer (*Odocoileus virginianus*) population density and environmental conditions in two regions dominated by tropical dry forests in central Mexico. The spatially explicit methods presented better goodness of fit than the OLS regression; we also observed a miscalculation in the probabilities obtained with the OLS regression, which in this method led to an incorrect interpretation. In general, we suggest the application of spatially explicit methods to analyze species-habitat relationships when SAC is observed in model residuals. We also discuss the management implications of these results.

Key words: species-habitat relationships, spatially explicit models, autoregressive model, generalized least squares regression.

Resumen

En los últimos años se han propuesto diversos métodos conocidos como espacialmente explícitos que permiten incorporar la autocorrelación espacial en los modelos. En este estudio, aplicamos modelos autorregresivos simultáneos (SAR_{err}) y generalización de mínimos cuadrados (GLS) para analizar la relación entre la densidad poblacional del venado cola blanca *Odocoileus virginianus* y un conjunto de variables de hábitat en dos regiones dominadas por bosque tropical seco en el centro de México. Contrastamos los resultados con los obtenidos con la regresión simple y múltiple por cuadrados mínimos ordinarios (OLS), que es el método comúnmente usado en este tipo de estudios. Los métodos espacialmente explícitos tuvieron un mejor desempeño que la regresión OLS en términos de bondad de ajuste. Por otro lado, observamos un cálculo incorrecto en las probabilidades obtenidas con la regresión OLS lo que en este método nos llevó a una mala interpretación de cuáles son las variables asociadas con la densidad de esta especie. Recomendamos, de manera general la aplicación de métodos espacialmente explícitos para analizar las relaciones especie-hábitat cuando se observe autocorrelación espacial en los residuales de los modelos. Discutimos las implicaciones de manejo.

Palabras clave: relación especie-hábitat, modelos espacialmente explícitos, modelo autorregresivo.

Received: 22 September 2014; Accepted: 1 September 2015; Published: 14 December 2015

Copyright: © Carlos Yañez-Arenas and Salvador Mandujano. This is an open access paper. We use the Creative Commons Attribution 4.0 license <http://creativecommons.org/licenses/by/3.0/us/>. The license permits any user to download, print out, extract, archive, and distribute the article, so long as appropriate credit is given to the authors and source of the work. The license ensures that the published article will be as widely available as possible and that your article can be included in any scientific archive. Open Access authors retain the copyrights of their papers. Open access is a property of individual works, not necessarily journals or publishers.

Cite this paper as: Yañez-Arenas, C. and Mandujano, S. 2015. Evaluating the relationship between white-tailed deer and environmental conditions using spatially autocorrelated data in tropical dry forests of central Mexico. Tropical Conservation Science Vol.8 (4): 1126-1139 Available online: www.tropicalconservationscience.org

Disclosure: Neither Tropical Conservation Science (TCS) or the reviewers participating in the peer review process have an editorial influence or control over the content that is produced by the authors that publish in TCS.

Introduction

Ordinary least-square (OLS) regression is fundamental to quantitative research in many ecological disciplines [1]. However, spatial autocorrelation structure in the data may invalidate the OLS regression assumption that model residuals are uncorrelated [2]. Spatial autocorrelation of an ecological response occurs when nearby locations in general have more similar values than distant locations, due to the relationship between distance and biological processes such as speciation, extinction, dispersion, or species interactions [3]. Spatial autocorrelation can explain these processes but also is a challenge for statistical analysis, since it violates the assumption of independence required for most statistical models, resulting in incorrect error probabilities and seriously flawed coefficient estimates [2, 4].

In the last two decades, a wide variety of methods (known as spatially explicit) have been proposed to correct for the effects of spatial autocorrelation. These methods, such as the wavelet-revised model [5], eliminate this autocorrelation in the response variable, while others [6] incorporate it into the predictor variables. However, according to Beale *et al.* [2], the methods that perform best are those that correct spatial autocorrelation in model residuals, such as generalized least-squares regression [7] and spatial error simultaneous autoregressive models (SAR_{err}) [8].

We used the spatially explicit models SAR_{err} and GLS to analyze habitat variables that correlated to white-tailed deer (*Odocoileus virginianus*) population density in two regions dominated by tropical dry forest in central Mexico. We compared the results of these models with those obtained with OLS regression, which is the most commonly used technique for analyzing species-habitat relationships [9]. We generated various models and evaluated their goodness of fit using the Akaike Information Criterion corrected for small samples [10]. In addition, we analyzed whether differences in deer density and habitat variables existed between the two study regions.

This evaluation is important because studies conducted in Mexico on the effects of different habitat variables on the density or abundance of the white-tailed deer [11-18] have employed conventional techniques such as simple regression or multiple regression by ordinary least-squares, multivariate techniques such as principal component analysis that do not take into account spatial

autocorrelation [19]. Understanding and including spatial autocorrelation can reveal more accurately the relationship between habitat and white-tailed deer population, with important repercussions for conservation and management of the white-tailed deer in Mexico.

Methods

Study area

The study areas were the Bajo Balsas and the Tehuacán-Cuicatlán Valley, both located in central Mexico (Fig. 1). The Bajo Balsas is in the western portion of the state of Michoacán, México (19° 11' N, 101° 42' W) and covers 6,904 km². Altitude ranges from 200 to 1,800 m.a.s.l., with three climatic zones : hot sub-humid, semiarid warm, and warm sub-humid with summer rains [20]. The annual mean temperature varies from 18 to 29°C and annual precipitation is from 533 to 1,347 mm. Main vegetation types include tropical dry forest in the lowlands and oak and mixed oak–pine forests at higher elevations [21]. The Tehuacán-Cuicatlán is located in the southern part of the state of Puebla and northern Oaxaca (18° 53' N, 97° 44' W) and covers almost 10,000 km². Altitude ranges from 34 to 1,829 m.a.s.l., the annual mean temperature is from 12 to 45°C, and annual precipitation varies from 260 to 3,011 mm. Main vegetation types include tropical dry forest and crassicaule scrub in the lowlands and temperate forests at higher elevations [22].

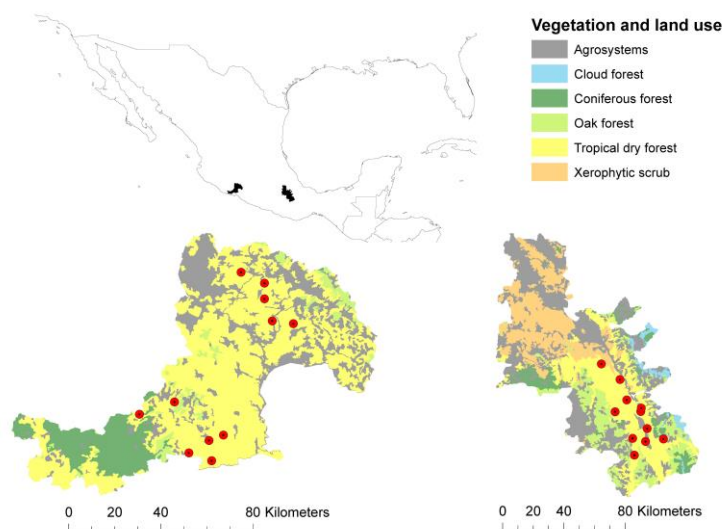


Fig. 1. Locations (red circles) where estimates of white-tailed deer density were obtained in the two study regions: Bajo Balsas (left) and Tehuacán-Cuicatlán (right). Land use and vegetation types are presented.

Population density estimations

We sampled a total of 11 locations in Bajo Balsas from August 2007 to August 2008, and 11 locations in the Tehuacán-Cuicatlán valley from March 2010 to May 2011. In Bajo Balsas, we sampled a total of 25 strip-transects (500 x 2 m) for pellet-group counts in five locations, and 30 transects (500 x 2 m) for track counts in six locations. In Tehuacán-Cuicatlán, we sampled 88 strip-transects (500 x 2 m). To sample pellet-groups, we followed the fecal standing crop count method according to Camargo-Sanabria and Mandujano [23, 24], while for track counts, we followed the procedure proposed by Mandujano [25]. Both of these methods generate similar results for relative deer density and both may therefore be used for detecting temporal changes in a population [26]. To estimate population density through pellet-group count, we used the equation proposed by Eberhardt & Van Etten [27]. We employed PELLET version 2.1 which is a semi-automated procedure in Excel[®] [28]. For the track count method, we used the equation proposed by Mandujano [25].

Environmental variables

We obtained a set of predictor variables for each studied site. These were: annual mean temperature (AMT), temperature mean diurnal range (MDR), annual precipitation (AP), precipitation seasonality (PSEAS), precipitation in the driest month of the year (PDRM), and precipitation in the coldest quarter of the year (PCOQ). However, because some of these represented redundant information, we screened for collinearity by examining pairwise correlations between variables. When a pair had a Pearson product-moment correlation coefficient >0.7 , one of the two variables was removed [29]. This procedure produced a reduced set of variables, of which six represented average (1950-2000) climatic conditions (Worldclim database [30]). In addition, we derived slope from the SRTM elevation model (<http://srtm.csi.cgiar.org>) and human population density from the population statistics reports of Michoacán and Oaxaca states [31]. With these eight variables the analyses described below were performed (final resolution of variables was 30 arc-seconds).

Statistical models

To analyze the relationship between deer density and environmental variables, we used OLS regression and the spatially explicit methods SAR_{err} [8] and GLS [7]. For a more extensive and detailed review of SAR_{err} and GLS, as well as other spatial regression techniques, see Dormann [8] and Perez *et al.* [32].

We first generated univariate models to evaluate the relationship between deer density and each habitat variable. In both SAR_{err} and GLS, an iterative protocol of “trial-and-error” was conducted for each model, generating proposals with different parameters to isolate spatial autocorrelation as much as possible. In GLS, the residual autocorrelation in the OLS was modelled by semi-variograms using different spatial structures (spherical, exponential, Gaussian) and coefficients (‘sill’, ‘null’ and ‘range’) [see 19]. An OLS fit between the expected (defined by the modelling process) and observed semi-variances was used to select the most appropriate parameters. In SAR_{err}, various models were generated by testing with different alpha values (between 1 and 2). This parameter (alpha) controls the weighting given to the closeness between pairs of neighboring observations [33].

At the end of the iterative protocol, the minimum residual autocorrelation (minRSA) and the overall explanation of the model (R^2) were used to select the best parameterization for each variable. It is important to highlight that R^2 values are not directly provided for the GLS and SAR_{err} models, and maximum model fit was therefore estimated with a pseudo- R^2 value (hereafter referred to simply as R^2), which was calculated as the squared Pearson correlation between the predicted and observed values [34].

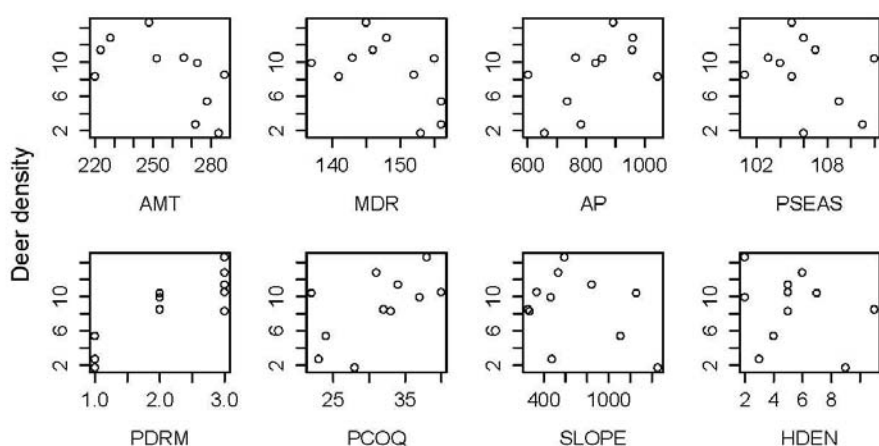
Multivariate regression models were subsequently generated, taking all of the variables into account. Different models were constructed to determine the set of variables that best explained deer density. The final model for each region was chosen to minimize AICc (the Akaike Information Criterion corrected for small samples) and minRSA based on backward selection [10]. Parameters for each multivariate model were determined using the iterative protocol “trial-and-error”. All spatial analyses were performed using the program SAM 4.0 (Spatial Analysis in Macroecology) [33].

Finally, we used a Z test [35] to determine whether differences in deer density existed between the two study regions. Comparisons among habitat variables were subsequently conducted using t-Student tests where variables fulfilled the assumptions of normality and homogeneity of variance,

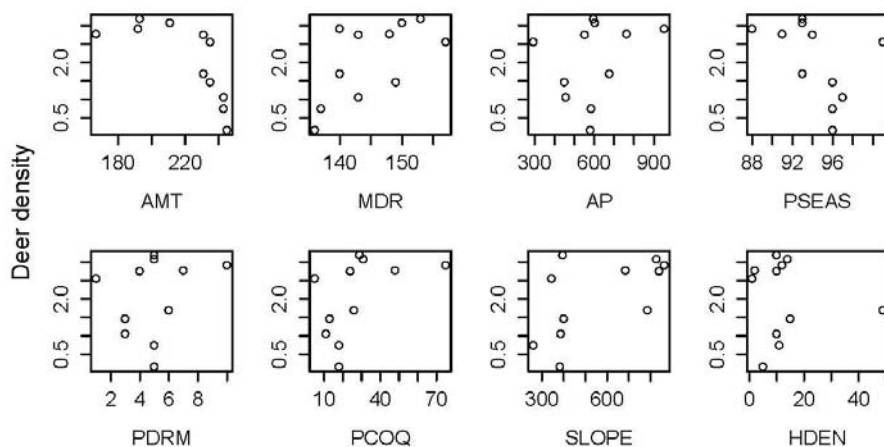
and Wilcoxon tests where they did not [36]. These analyses were conducted using the program R ver. 2.11.0 [37].

Results

According to the OLS regression, there were four habitat variables significantly related to the density of the white-tailed deer in Bajo Balsas and three in Tehuacán-Cuicatlán (Appendix 1). However, according to the spatially explicit regression methods (SAR_{err} and GLS), only two variables were related in each region: precipitation in the driest month of the year and precipitation in the coldest quarter of the year in Bajo Balsas (Fig. 2a); and annual mean temperature and precipitation seasonality in Tehuacán-Cuicatlán (Fig. 2b). Based on backward selection, we chose the models with the lowest AICc and minRSA, which selected the same variables (Appendix 2). In general, the spatially explicit methods (GLS and SAR_{err}) presented better goodness of fit than the OLS regression and also reduced spatial autocorrelation in the residuals (see minsRSA values). In particular, GLS regression best modeled the spatial autocorrelation and obtained the lowest AICc (Appendix 2; Fig. 3).



Bajo Balsas



Tehuacán-Cuicatlán

Fig. 2. Relationship between deer density (ind/km²) and environmental variables in Bajo Balsas and Tehuacán-Cuicatlán regions. AMT = annual mean temperature, MDR = mean diurnal range, AP = annual precipitation, PSEAS = precipitation seasonality, PDRM = precipitation in the driest month of the year, PCOQ = precipitation in the coldest quarter of the year, SLOPE = slope, and HDEN = human population density.

According to the Z test ($P < 0.05$), population density was significantly higher in Bajo Balsas (8.75 ± 4.03 ind/km²) than in Tehuacán-Cuicatlán (2.03 ± 1.05 ind/km²). Regarding habitat variables, no significant differences were found between the two study regions for temperature mean diurnal range, precipitation in the coldest quarter of the year, and slope (Fig. 3). Significant differences were observed in the remaining habitat variables between the study regions (Fig. 3). In Bajo Balsas, annual mean temperature, annual precipitation, and precipitation seasonality were all higher than in Tehuacán-Cuicatlán. In contrast, precipitation in the driest month and human population density were lower in Bajo Balsas than in Tehuacán-Cuicatlán (Fig. 3).

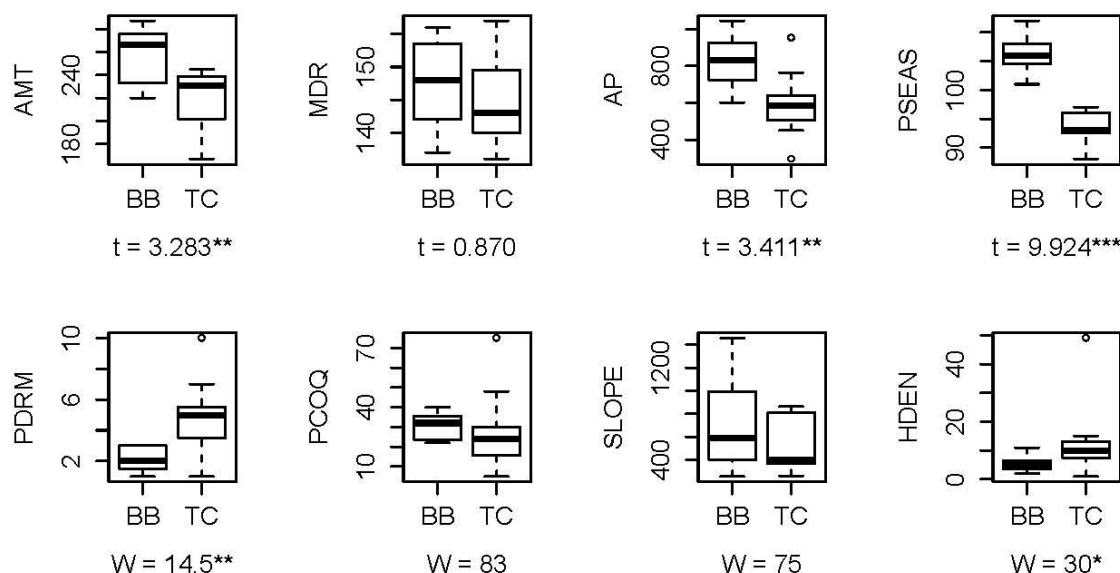


Fig. 3. Environmental comparison between the two regions: Bajo Balsas (BB) and Tehuacán-Cuicatlán (TC). The *P* value and test conducted are presented: *W* = Wilcoxon, *t* = *t*-Student. AMT = annual mean temperature, MDR = mean diurnal range, AP = annual precipitation, PSEAS = precipitation seasonality, PDRM = precipitation in the driest month of the year, PCOQ = precipitation in the coldest quarter of the year, SLOPE = slope and HDEN = human population density. * = $P < 0.05$, ** $P < 0.01$, *** $P < 0.001$.

Discussion

Comparison among methods

Analysis of the residuals through correlograms in the OLS regression consistently presented a positive spatial autocorrelation at short distances. This could mainly be due to the absence in the analysis of spatially structured explicative variables [8] that reflect biological processes in the deer populations, such as dispersion movements of individuals, interaction with other species (predators and food), anthropogenic effects, and other demographic factors. The SAR_{err} and GLS methods eliminated, or considerably diminished, the effects of SAC in the residuals of the models.

When spatial autocorrelation exists in the residuals and the methods do not incorporate it, as is the case in the OLS regression, there is an increased probability of type I error (rejecting the null hypothesis when it is in fact true). It is thus possible to erroneously conclude that there is a relationship between variables when this is in fact untrue, since the coefficients of determination are inflated while the *P* values decrease [2, 4, 38]. Our univariate analysis results confirm this, since

more habitat variables were significantly correlated with deer density in the OLS regression, and the P values were always lower than those of the spatially explicit methods SAR_{err} and GLS (in both Bajo Balsas and Tehuacán-Cuicatlán).

Regarding the comparison of the measurement of goodness of fit among the three methods, the spatially explicit methods performed better (lower AICc and higher R²) than the OLS regression, a common pattern that has been reported in other studies involving data with spatial autocorrelation [2, 8, 39]. On the other hand, the results of the SAR_{err} and GLS methods do not differ greatly since both control spatial autocorrelation of the model residuals and are mathematically similar [40, 41]. Nevertheless, consistently lower AICc values were found in GLS, which is possibly due to the fact that GLS is more flexible in the form in which SAC is incorporated into the models [8]. In GLS, the spatial structure of the covariance is modeled using a parametric function that is usually a semi-variogram model [8, 42], while in SAR_{err}, a weights matrix is generated that specifies the force of influence between neighboring observations and requires an iterative process in order to achieve optimum parametrization [33].

Explicative environmental variables

The best models in both regions had at least one climatic variable. This is logical from a biological perspective, since the importance of climatic factors and the manner in which they affect ungulate populations is widely documented in the literature [43-47]. High temperatures (> 30 °C) in semi-arid and tropical dry forests could have a negative effect on deer density, since this may lead to dehydration in the animals [48]. In the two study regions, a clear trend was observed in which densities began to decrease as temperatures increased, although significantly so only in Tehuacán-Cuicatlán. Annual precipitation between 400 and 1,800 mm has a generally positive effect on this deer species since it increases the quantity of available food [46, 49]. For example, in Bajo Balsas, high precipitation in the driest month and the coldest quarter of the year were positively associated with deer density, while in Tehuacán-Cuicatlán seasonality of precipitation correlated negatively with density, since rain throughout the year is less than 500 mm.

The only two non-climatic variables used in this analysis were slope and human population density. We considered it important to include the former since it is related to deer strategy for escaping from predators [13, 50, 51]. Regarding the latter, it is well known that human presence and activity have a negative effect on many species, which has been described for the white-tailed deer in Mexico by some authors [17, 18, 52]. However, while it is possible to note certain trends in the relationship between these variables and deer density, this was not found to be significant in either of the two study regions.

Comparison between regions

The exact causes for the differences in deer density between the two regions are difficult to determine from our analyses. However, we can make some assumptions based on the environmental comparison between the zones. Climatically, four of the six analyzed variables differed significantly between the regions: annual mean temperature, annual precipitation, precipitation in the driest month, and precipitation seasonality. In Bajo Balsas, deer density was significantly higher because, despite having higher temperatures than Tehuacán-Cuicatlán, it rains more and over a longer period of the year. This can be directly related to the availability of food for the deer and thus to the carrying capacity of the region [46, 49].

The other variable that differed significantly between regions was human population density, which was greater in Tehuacán-Cuicatlán. It is therefore likely that the low deer densities observed in this zone were the result of human pressure. In most of the sites of this region, we note high levels of illegal hunting and also that livestock production competes with the deer for space and food, with direct consequences for the deer populations [11, 18, 53, 54]. Another important consideration is that certain variables related to the structure of vegetation strongly affect the density of the white-tailed deer at the local scale in both regions (Bajo Balsas [17] and Tehuacán-Cuicatlán [18]). However, in order to characterize variables of this type it would be necessary to conduct time-consuming vegetation sampling in every transect where deer excrement was found.

Implications for conservation

Our results provide insights into methodological, ecological, management and conservation issues of white-tailed deer inhabiting tropical dry forests in Mexico. From methodological and ecological perspectives, studies of deer-habitat relationships have traditionally been conducted at small scales and have provided valuable information regarding the variables that affect local populations of this species [see 11-18, 47]. However, unless these studies are repeated in various habitats and different regions, it is impossible to know which results are specific to each location and which can be generalized. Large-scale (regional, landscape, ecoregion) studies are therefore very important to better understand natural systems, to make inferences in non-sampled areas, and to propose improved management strategies [16]. However, such studies require statistical tools that take the spatial aspect into account when analyzing the data. The SAR_{err} and GLS models are a good option for evaluation of species-habitat relationships where spatial autocorrelation is observed in the model residuals.

For management and conservation of white-tailed deer populations, habitat management is a key strategy [55]. Intensive habitat management involves manipulating food quality and availability, vegetation cover to protect against climatic conditions and predators, and supplementary water sources during the driest months, which have been the principal practices in temperate and semi-arid habitats [56-58] and in some tropical dry forests [51, 52, 59]. These habitat variables are affected principally by precipitation and temperature [56]. According to our results, the main variables related to the density of deer in Bajo Balsas region were the precipitation in the driest month of the year and precipitation in the coldest quarter of the year, and in Tehuacán-Cuicatlán the annual mean temperature and precipitation seasonality. Therefore, we suggest integrating spatially explicit models that incorporate different environmental and vegetation variables [17, 18] to implement appropriate habitat management actions. Since management practices imply economic cost for local people, it is important to adequately define the key variables that affect local deer populations [55].

Acknowledgements

We thank J. M. Lobo, S. Gallina and R. Guevara for comments. Field work was assisted by L. A. Escobedo Morales, A. González Zamora, Á. Méndez, J. C. Castillo, N. Corona, A. Vázquez, C. Ríos, K. P. Rodríguez Medina, D. Ponce and local guides. We appreciate the collaboration of A. Pérez Arteaga, J. M. Salazar, M. Romero Tinoco and V. Tapia. This study was partially supported by the government of the State of Michoacán, COECYT, FOMIX, CONACYT, Universidad Michoacana de San Nicolás de Hidalgo and Conservación y Manejo Ambiental de la Costa de Michoacán A. C. in Bajo Balsas. In Tehuacán-Cuicatlán Valley, the study was supported by the Biosphere Reserve directive (CONANP), the local authorities of Oaxaca and Puebla states, CONACYT (CB-2009-01 No. 130702),

and the Red de Biología y Conservación de Vertebrados del Instituto de Ecología, A. C. Valuable scientific comments input were provided during the 'Academic Retreat 2014' organized by INECOL.

References

- [1] Wagner, H.H. 2013. Rethinking the linear regression model for spatial ecological data. *Ecology* 94:2381-2391.
- [2] Beale, C.M., Lennon, J.J., Yearsley J.M., Brewer, M.J., and Elston, D.A. 2010. Regression analysis of spatial data. *Ecology Letters* 13:246-264.
- [3] Legendre, P., and M. J. Fortin. 1989. Spatial pattern and ecological analysis. *Vegetation* 80:107-138.
- [4] Kühn, I., and Dormann, C.F. 2012. Less than eight (and a half) misconceptions of spatial analysis. *Journal of Biogeography* 39:995-998.
- [5] Carl, G., Dormann, C.F., and Kühn, I. 2008. A wavelet-based method to remove spatial autocorrelation in the analysis of species distributional data. *Web Ecology* 8:22-29.
- [6] Bellier, E., Monestiez, P., Durbec, J. P., and Candau, J. N. 2007. Identifying spatial relationships at multiple scales: principal coordinates of neighbour matrices (PCNM) and geostatistical approaches. *Ecography* 30:385-399.
- [7] Pinheiro, J.C., and Bates, D.M. 2000. *Mixed effects models in S and S-PLUS*. Springer, New York.
- [8] Dormann, C.F. 2007. Effects of incorporating spatial autocorrelation into the analysis of species distribution data. *Global Ecology and Biogeography* 16:129-138.
- [9] Buckland, S.T., Anderson, D.R., Burnham, K.P., Laake, J.L., Borchers, D.L., and Thomas, L. 2001. *Introduction to Distance Sampling: Estimating Abundance of Biological Populations*. Oxford University Press, Oxford.
- [10] Anderson, D.R. 2008. *Model based inference in the life sciences: a primer on evidence*. Springer, New York, USA.
- [11] Ortiz-Martínez, T., Gallina, S., Briones-Salas, M., and González, G. 2005. Densidad poblacional y caracterización del hábitat del venado cola blanca (*Odocoileus virginianus oaxacensis*, Goldman y Kellog, 1940) en un bosque templado de la sierra norte de Oaxaca, Mexico. *Acta Zoológica Mexicana (n.s.)* 21:65-78.
- [12] López-Téllez, M.C., Mandujano, S., and Yánes, G. 2007. Evaluación poblacional del venado cola blanca en un bosque tropical seco de la mixteca poblana. *Acta Zoológica Mexicana (n.s.)* 23:1-16.
- [13] Medina-Torres, S.M., García-Moya, E., Márquez-Olivas, M., Vaquera-Huerta, H., Romero-Manzanares, A., and Martínez-Menes, M. 2008. Factores que influyen en el uso del hábitat por el venado cola blanca (*Odocoileus virginianus couesi*) en la sierra del Laurel, Aguascalientes, México. *Acta Zoológica Mexicana (n.s.)* 24:191-212.
- [14] Coronel-Arellano, H., López-González, C.A., and Moreno-Arzate, C.N. 2009. ¿Pueden las variables de paisaje predecir la abundancia de venado cola blanca? El caso del noroeste de México. *Tropical Conservation Science* 2:229-236.
- [15] Bolívar-Cimé, B., and Gallina, S. 2012. An optimal habitat model for the white-tailed deer (*Odocoileus virginianus*) in central Veracruz, Mexico. *Animal Production Science* 52: 707 – 713.
- [16] Yañez-Arenas, C.A., Martínez-Meyer, E., Mandujano, S., and Rojas-Soto, O. 2012. Modelling geographic patterns of population density of the white-tailed deer in central Mexico by implementing ecological niche theory. *Oikos* 121:2081–2089.
- [17] Mandujano, S., Yañez-Arenas, C.A., González-Zamora, A., and Pérez-Arteaga, A. 2013. Habitat-population density relationship for the white-tailed deer *Odocoileus virginianus* during the dry season in a Pacific Mexican tropical dry forest. *Mammalia* 77: 381-389.

- [18] Ramos-Robles, M., Gallina, S., and Mandujano, S. 2013. Habitat and human factors associated with white-tailed deer density in the tropical dry forest of Tehuacán-Cuicatlán Biosphere Reserve, Mexico. *Tropical Conservation Science* 6:70-86.
- [19] Legendre, P., and Legendre, L. 1998. *Numerical ecology*. Elsevier, Amsterdam.
- [20] García, E. 1981. *Modificaciones al sistema de clasificación climática de Köppen para adaptarlo a las condiciones de la República Mexicana*. Instituto de Geografía, Universidad Nacional Autónoma de México, México, D.F.
- [21] Palacio-Prieto, J.L., Bocco, G., Velázquez, A., Mas, J.F., Takaki-Takaki, F., Victoria, A., Luna-González, L., Gómez-Rodríguez, G., López-García, J., and Palma, M. 2000. La condición actual de los recursos forestales en México: resultados del Inventario Forestal Nacional 2000. *Investigaciones Geográficas* 43:183-203.
- [22] Dávila, P., Villaseñor, J.L., Medina, R., Ramírez, A., Salinas, A., Sánchez-Ken, J., and Tenorio, P. 1993. *Listado Florístico del Valle de Tehuacán-Cuicatlán*. Listados florísticos VIII, Instituto de Biología, Universidad Nacional Autónoma de México. México, D. F.
- [23] Camargo-Sanabria, A.A., and Mandujano, S. 2011. Comparison of pellet-group counting methods to estimate population density of white-tailed deer in a Mexican tropical dry forest. *Tropical Conservation Science* 4:230-243.
- [24] Campbell, D., Swanson, G.M., and Sales, J. 2004. Comparing the precision and cost-effectiveness of faecal pellet group count methods. *Journal of Ecology* 41:1185-1196.
- [25] Mandujano, S. 2005. Track count calibration to estimate density of white-tailed deer (*Odocoileus virginianus*) in Mexican dry tropical forest. *The Southwestern Naturalist* 50: 223-229.
- [26] Mandujano, S., and Gallina, S. 1995. Comparison of deer censusing methods in tropical dry forest. *Wildlife Society Bulletin* 23: 180-186.
- [27] Eberhardt, L.L., and Van Etten, R.C. 1956. Evaluation of the pellet group count as a deer census method. *Journal of Wildlife Management* 20:70-74.
- [28] Mandujano, S. 2014. PELLET: An Excel®-based procedure for estimating deer population density using the pellet-group counting method. *Tropical Conservation Science* 7:308-325.
- [29] Gormley, A.M., Forsyth, D.M., Griffioen, P., Lindeman, M., Ramsey, D.S.L., Scroggie, M.P., and Woodford, L. 2011. Using presence only and presence-absence data to estimate the current and potential distributions of established invasive species. *Journal of Applied Ecology* 48:25-34.
- [30] Hijmans, R.J., Cameron, S.E., Parra, J.L., Jones, P.G., and Jarvis, A. 2005. Very high resolution interpolated climate surfaces for global land areas. *International Journal of Climatology* 25:1965-1978.
- [31] INEGI. 2005. *Anuario estadístico del estado de Michoacán*. Instituto Nacional de Estadística, Geografía e Informática, Michoacán, México.
- [32] Perez, S., Diniz-Filho, J., Bernal, V., and Gonzalez, P. 2010. Spatial regression techniques for inter-population data: studying the relationships between morphological and environmental variation. *Journal of Evolutionary Biology* 23:237-248.
- [33] Rangel, T.F., Diniz-Filho, J.A.F., and Bini, L.M. 2006. Towards an integrated computational tool for spatial analysis in macroecology and biogeography. *Global Ecology and Biogeography* 15:321-327.
- [34] Kissling, W. D., and Carl, G. 2007. Spatial autocorrelation and the selection of simultaneous autoregressive models. *Global Ecology and Biogeography* 17:59-71.
- [35] Plumptre, A.J. 2000. Monitoring mammal populations with line transect techniques in African forests. *Journal of Applied Ecology* 37:356-368.
- [36] Crawley, M. J. 2007. *The R Book*. John Wiley & Sons Ltd, Chichester.
- [37] R Development Core Team. 2012. *R: a language and environment for statistical computing*. Version 2.15.1. <http://cran.R-project.org>. R Foundation for Statistical Computing, Vienna.

- [38] Bini, M.L., Diniz-Filho, J.A.F., Rangel, T.F., Akre, T.S.B., Albaladejo, R.G., Albuquerque, F.S., Aparicio, A., Araújo, M.B., Baselga, A., Beck, J., Bellocq, M.I., Böhning-Gaese, K., Borges, P.A.V., Castro-Parga, I., Chey, V.K., Chown, S.L., De Marco Jr, P., Dobkin, D.S., Ferrer-Castán, D., Field, R., Filloy, J., Fleishman, E., Gómez, J.F., Hortal, J., Iverson, J.B., Kerr, J.T., Kissling, D., Kitching, I.J., León-Cortés, J.L., Lobo, J.M., Montoya, D., Morales-Castilla, I., Moreno, J.C., Oberdorff, T., Olalla-Tárraga, M.A., Pausas, J.G., Qian, H., Rahbek, C., Rodríguez, M.A., Rueda, M., Ruggiero, A., Sackmann, P., Sanders, N.J., Terribile, L.C., Vetaas, O.R., and Hawkins, B.A. 2009. Coefficient shifts in geographical ecology: an empirical evaluation of spatial and non-spatial regression. *Ecography* 32:193-204.
- [39] Rangel, T.F., Diniz-Filho, J.A.F., and Bini, L.M. 2010: SAM: a comprehensive application for Spatial Analysis in Macroecology. *Ecography* 33:46-50.
- [40] Selmi, S., and Boulinier, T. 2001. Ecological biogeography of Southern Ocean islands: the importance of considering spatial issues. *The American Naturalist* 158:426-437.
- [41] Hawkins, B.A., and Diniz-Filho, J.A.F. 2002. The mid-domain effect cannot explain the diversity gradient of Nearctic birds. *Global Ecology and Biogeography* 11:419-426.
- [42] Cressie, N. 1993. *Statistics for Spatial Data*. Wiley, New York, USA.
- [43] Loison, A., Langvatn, R., and Solberg, E.J. 1999. Body mass and winter mortality in red deer calves: disentangling sex and climate effects. *Ecography* 22:20-30.
- [44] Xie, J., Hill, H.R., Winterstein, S.R., Campa III, H., Doepker, R.V., Van Deelen, T.R., and Liu, J. 1999. White-tailed deer management options model (DeerMOM): design, quantification, and application. *Ecological Modelling* 124:121-130.
- [45] Mysterud, A., Yoccoz, N.G., Stenseth, N.C., and Langvatn, R. 2000. Relationships between sex ratio, climate and density in red deer: the importance of spatial scale. *Journal of Animal Ecology* 69:959-974.
- [46] Mandujano, S. 2006. Preliminary evidence of the importance of ENSO in modifying food availability for white-tailed deer in a Mexican tropical dry forest. *Biotropica* 38:695-699.
- [47] Shi, H., Laurent, E.J., LeBouton, J., Racevskis, L., Hall, K.R., Donovan, M., Doepker, R.V., Walters, M.B., Lupi, F., and Liu, J. 2006. Local spatial modeling of white-tailed deer distribution. *Ecological Modelling* 190:171-189.
- [48] Ockenfels, R.A., and Bissonette, J.A. 1984. Temperature-related responses in North-Central Oklahoma white-tailed deer. Pp. 64-67 in P.R. Krausman and N.S. Smith (eds), *Deer in the southwest: A workshop*, Arizona Cooperative Wildlife Research Unit, University of Arizona, Tucson, Arizona.
- [49] Mandujano, S., and Naranjo, E.J. 2010. Ungulate biomass across a rainfall gradient: a comparison of data from Neotropical and Palaeotropical forests and local analyses in Mexico. *Journal of Tropical Ecology* 26:1-11.
- [50] Sánchez-Rojas, G., Gallina, S., and Mandujano, S. 1997. Área de actividad y uso del hábitat de dos venados cola blanca (*Odocoileus virginianus*) en un bosque tropical caducifolio de la costa de Jalisco, México. *Acta Zoológica Mexicana (n.s.)* 72:39-54.
- [51] Segura, W. 1998. Application of the HEP methodology and use of gis to identify priority sites for the management of white-tailed deer. Pp. 127-137 in: B. Savitsky and T. Lache (eds.), *GIS Methodologies for Developing Conservation Strategies. Tropical Forest Recovery and Wildlife Management in Costa Rica*. Columbia University Press, New York.
- [52] Delfín-Alfonso, C.A., and Gallina, S. 2007. Modelo de evaluación de hábitat para el venado cola blanca en un bosque tropical caducifolio en México. pp. 193-202 in: M. Zunino and A. Melic (eds.), *Escarabajos, diversidad y conservación biológica. Ensayos en homenaje a Gonzalo Halfter*. Sociedad Entomológica Aragonesa, Zaragoza.

- [53] Naranjo, E.J., Guerra, M.M., Bodmer, R.E., and Bolaños, J. 2004. Subsistence hunting by three ethnic groups of the Lacandon forest, Mexico. *Journal of Ethnobiology* 24:233-254.
- [54] Reyna-Hurtado, R., and Tanner, G.W. 2005. Habitat preferences of ungulates in hunted and nonhunted areas in the Calakmul forest, Campeche, Mexico. *Biotropica* 37:676-685.
- [55] Villarreal, J. 1999. Venado Cola Blanca: Manejo y Aprovechamiento Cinegético. Unión Ganadera Regional de Nuevo León. Monterrey, N. L., México.
- [56] Fulbright, E. y A. Ortega-S. 2007. Ecología y manejo de venado cola blanca. Texas A & M University Press, College Station, TX, USA. 265 pp.
- [57] Jacobson, H. A., C. A. DeYoung, R. W. DeYoung, T. E. Fulbright, and D. G. Hewitt. 2011. Management in private property. Pp. 453-479, In: D. Hewitt (ed.), *Biology and Management of White-Tailed Deer*, CRC Press, Taylor & Francis Group, Boca Raton, FL.
- [58] Fulbright, T. E. 2011. Managing white-tailed deer: western North America. Pp. 537-567, In: D. Hewitt (ed.), *Biology and Management of White-Tailed Deer*, CRC Press, Taylor & Francis Group, Boca Raton, FL.
- [59] Villarreal Espino-Barros, O.A. 2006. El Venado Cola Blanca en la Mixteca Poblana; Conceptos y Métodos para su Conservación y Manejo. Fundación Produce; BUAP; Mazamiztli, A.C. Primera edición. Puebla, México.

Appendix 1. Relationship between deer density and the explicative variables in Bajo Balsas and Tehuacán-Cuicatlán. The minRSA, R^2 and the value of significance (P value) are shown. * = $P < 0.05$, ** $P < 0.01$, *** $P < 0.001$.

Variable	Bajo Balsas			Tehuacán-Cuicatlán			Method
	minRSA	R^2	P	minRSA	R^2	P	
Annual mean temperature	0.68	0.39	0.04*	0.84	0.53	0.01*	OLS
	0.67	0.71	0.11	0.70	0.56	0.028*	SAR
	0.66	0.60	0.15	0.69	0.38	0.028*	GLS
Temperature mean diurnal range	0.75	0.34	0.06	0.72	0.17	0.2	OLS
	0.55	0.34	0.09	0.67	0.26	0.44	SAR
	0.67	0.46	0.41	0.66	0.35	0.5	GLS
Annual precipitation	0.71	0.37	0.048*	0.74	0.07	0.42	OLS
	0.47	0.37	0.051	0.62	0.09	0.57	SAR
	0.49	0.52	0.51	0.67	0.11	0.42	GLS
Precipitation seasonality	0.69	0.09	0.38	0.88	0.55	0.01**	OLS
	0.56	0.13	0.39	0.70	0.58	0.015*	SAR
	0.56	0.49	0.39	0.71	0.64	0.036*	GLS
Precipitation of driest month of the year	0.93	0.74	0.001***	0.70	0.06	0.41	OLS
	0.64	0.86	0.001***	0.66	0.16	0.48	SAR
	0.63	0.88	0.001***	0.67	0.29	0.49	GLS
Precipitation in coldest quarter of the year	0.51	0.49	0.015*	0.73	0.25	0.12	OLS
	0.51	0.78	0.03*	0.68	0.33	0.13	SAR
	0.45	0.85	0.02*	0.66	0.39	0.22	GLS
Slope	0.58	0.25	0.11	0.77	0.39	0.038*	OLS
	0.49	0.29	0.32	0.70	0.57	0.09	SAR
	0.49	0.47	0.82	0.67	0.49	0.11	GLS
Human population density	0.73	0.07	0.43	0.72	0.01	0.38	OLS
	0.67	0.08	0.54	0.68	0.06	0.45	SAR
	0.69	0.36	0.89	0.68	0.07	0.59	GLS

Appendix 2. Summary characteristics of the three models with lowest minRSA and AICc after the backward selection procedure. A measure of model fit is also given (R^2). PDRM = precipitation in the driest month of the year, PCOQ = precipitation in the coldest quarter of the year, AMT = annual mean temperature, PSEAS = precipitation seasonality.

Region	Model	minRSA	R^2	AICc	Method
Bajo Balsas	PDRM + PCOQ	0.88	0.71	70.03	OLS
		0.73	0.80	66.40	SAR
		0.70	0.85	62.69	GLS
		0.50	0.75	39.78	OLS
Tehuacán-Cuicatlán	AMT + PSEAS	0.44	0.80	36.53	SAR
		0.44	0.89	25.29	GLS