



Cloning and Expression Analysis of Four Heat Shock Protein Genes in *Ericerus pela* (Homoptera: Coccidae)

Authors: Liu, Wei-Wei, Yang, Pu, Chen, Xiao-Ming, Xu, Dong-Li, and Hu, Yan-Hong

Source: Journal of Insect Science, 14(142) : 1-9

Published By: Entomological Society of America

URL: <https://doi.org/10.1093/jisesa/ieu032>

RESEARCH

Cloning and Expression Analysis of Four Heat Shock Protein Genes in *Ericerus pela* (Homoptera: Coccidae)

Wei-Wei Liu,* Pu Yang,* Xiao-Ming Chen,¹ Dong-Li Xu, and Yan-Hong Hu

Research Institute of Resources Insects, Chinese Academy of Forestry, Key laboratory of Cultivating and Utilization of Resources Insects of State Forestry Administration, Kunming 650224, China

¹Corresponding author, e-mail: cafcxm@139.com

*These authors contributed equally to this work

Subject Editor: Qili Feng

J. Insect Sci. 14(142): 2014; DOI: 10.1093/jisesa/ieu032

ABSTRACT. To explore the function of small heat shock protein genes (*shsps*) and *hsp70* in *Ericerus pela*, we cloned the full-length cDNA sequences of *hsp21.5*, *hsp21.7*, *hsp70*, and *hsc70* and the genomic sequence of *hsc70*. Open reading frames of the four *hsps* were 570, 564, 1,908, and 1,962 base pairs (bp), respectively, which encode proteins with calculated molecular mass of 21.5, 21.7, 69.8, and 71.6 kDa. Amino acid sequence analysis revealed the presence of the conserved Hsp motifs in all four proteins. The genomic DNA of *hsc70* had four introns. *ep-hsp21.5* was orthologous and *ep-hsp21.7* was species specific. Expression of all four transcripts during heat or cold stress and development was examined by quantitative real-time polymerase chain reaction. All four *hsps* were upregulated during heat or cold stress in female adults, indicating a correlation between the four *hsps* and heat or cold-stress tolerance in female adults. *ep-hsp21.7* and *ep-hsp70* were upregulated during heat stress in male larvae, implying a correlation between the two *hsps* and heat-stress tolerance in male larvae. The four *ep-hsps* were also upregulated during the developmental process in males, and *ep-hsp21.5*, *ep-hsp70*, and *ep-hsc70* were upregulated in females, which indicates their possible role in the developmental regulation of *E. pela*.

Key Words: *Ericerus pela*, heat shock protein, heat stress, cold stress, development

The Chinese white wax scale insect, *Ericerus pela* Chavannes (Homoptera: Coccidae), is a coccid insect famous for its role in wax production. The species is highly sexually dimorphic with holometamorphic males and hemimetabolic females. Females develop through the egg, first- and second-stage larva, and adult stages during their life. The female adults only have rudimentary legs and cannot move during the adult period. However, males undergo egg, first- and second-stage larva, pupa, and adult stages, emerging as winged adults. These white wax scale insects produce only one generation annually, and the females produce eggs in May (spring), which then develop through two larval stages. The insects enter the adult stage in August (summer). Female adults endure the winter and produce offsprings in the subsequent May before they die. The female adult life spans over >180 d, with a duration that lasts three seasons: summer, autumn, and winter. During its life, the female adults of *E. pela* face summer heat stress and winter cold stress. Therefore, tolerance of female adults to high and low temperatures is critical to the survival and reproduction of *E. pela*. In contrast, adult males have a life span of <1 wk, and they die just after copulation in August. In male larvae, the second instar is the longest developmental stage of 70–80 d, during which they continuously secrete large amounts of wax. During this period, heat stress and high humidity can enhance male larvae to secrete wax, forming a thick wax layer on the surface of the body (Zhang and Liu 1997, Chen et al. 2007a, Chen and Feng 2009, Chen 2011). The larvae and the pupae stay in the wax layer until eclosion. To increase wax production, *E. pela* are usually transported to areas of high temperature and humidity to facilitate wax secretion by the male larvae. Therefore, tolerance of second-stage male larvae to high temperature stress is critically important for the wax production and male survival.

E. pela has been bred for over 1,000 yr, and this insect species is widely distributed in most parts of China and elsewhere, Japan, and the Korean peninsula. For wax production, high-quality females are produced in regions with an annual average temperature of 11–16°C, with the lowest temperature between –5 and –2°C, an annual rain fall of

800–1,200 mm/a, and an annual light period of 1,900–2,500 h/a. In attempts to introduce *E. pela* to various geographical regions, we found that *E. pela* was more adaptable and plastic with respect to the environment than most of other insects. It is widely distributed in the subtropical, warm temperate and temperate areas. In Changchun City of China, where the lowest temperature is below –30°C and the lowest average monthly temperature is about –13°C, *E. pela* can survive and produce offsprings. In Chongqing City, where the highest temperature is 44°C and the highest average monthly temperature is about 26°C, *E. pela* can also survive and carry on reproduction (Zhang and Liu 1997, Chen and Feng 2009, Chen 2011). This remarkable tolerance of *E. pela* to extreme hot and cold temperatures is important for wax production. *E. pela* also provides a model to study the mechanism of extreme temperature stress adaptation in insects (Lalouette et al. 2011, Dunning et al. 2012, Reiskind and Zarrabi 2012). Most studies on *E. pela* have focused on white wax production and related ecology (Jiao and Zhao 1999; Chen et al. 2008, 2011); however, the molecular mechanisms underlying the adaptability of *E. pela* to extreme temperatures have not been reported.

Heat shock proteins (Hsps) are induced by a diverse array of stresses, such as desiccation (Lopez-Martinez et al. 2009), hypoxia (Michaud et al. 2011), chemicals (Planelló et al. 2011), metals (Zhang and Zhang 2012), ultraviolet radiation (Sang et al. 2012), parasitic infections (Shim et al. 2008), and high population densities (Wang et al. 2007). Hsps act as molecular chaperones and play critical roles in facilitating correct protein folding or refolding, preventing aggregation of denatured proteins, degrading misfolded or aggregated proteins, and transporting and assembling or disassembling proteins (Gething and Sambrook 1992, Sanders 1993). Hsps are divided into several families according to sequence homology and molecular mass, including Hsp90, Hsp70, Hsp60, Hsp40, and small Hsp (sHsp), and each family comprises one or several members. Among the Hsps, Hsp70 is well studied and is the major Hsp family that comprises both inducible and constitutive protein members. The constitutive proteins are referred to

as heat shock cognate proteins (Hsps), which do not show significant change in response to stress. Proteins of the *hsp* family range in size from 12 to 42 kDa, most of which are smaller than 30 kDa and more diverse than other inducible Hsps in the sequence, except a conserved α -crystallin domain of ~90 amino acids (Sørensen et al. 2003, Stahl et al. 2007, Lü and Wan 2011, Hanazono et al. 2012). In insects, Hsps are known to confer temperature tolerance. In addition to this function, Hsps are also integral to normal cell growth and development, and the expression patterns of Hsps are in general consistent with enhanced stress such as cold winter temperatures encountered by insects (Feder and Hofmann 1999, Morrow and Tanguay 2012). Considering the critical role of Hsps in response to irreversible stress conditions in many insects, it is presumed that Hsps can also be involved in the temperature adaptation of *E. pela*. To explore this possibility, the full-length cDNA sequences of four *hsp*s (*hsp21.5*, *hsp21.7*, *hsp70*, and *hsc70*) were selected from the transcriptome of *E. pela* and cloned. In addition, the *hsc70* genomic sequence was also characterized. Transcriptional expression patterns of the four *E. pela hsp*s under temperature stress and during various developmental stages were examined by quantitative real-time polymerase chain reaction (qRT-PCR). Our results of this study will promote greater understanding of the basis for the adaptation and population variations within *E. pela* at a molecular level.

Materials and Methods

Insects. *E. pela* samples were collected from the Chinese private *Ligustrum lucidum* in the Research Institute of Resources Insects.

Samples of *E. pela* were collected at the following developmental stages: a mixture of male and female eggs, first- and second-stage larvae of male and female, male pupae, male adults and female adults at early- (FA1), middle- (FA2), and late stages (FA3).

To induce heat stress, female adults and male second-stage larvae, which have the longest developmental stages for each sex, were exposed to the following temperatures for 1 h: 45°C, 42°C, 39°C, 36°C, and 33°C. To simulate cold stress, temperatures were set at -20°C, -15°C, -10°C, -5°C, 0°C, and 5°C. Female adults and male second-stage larvae maintained at 25°C were used as controls. Immediately after treatment, all samples were separately homogenized in TRIzol reagent and then stored at -70°C until RNA extraction. Eggs were used as a control group. Three replicates were prepared for each experimental group.

cDNA Synthesis and RACE. Total RNA from adult females was isolated using TRIzol reagent (Invitrogen, California, USA) according to the manufacturer's instructions and used as template to generate cDNA using SMARTer RACE (Rapid Amplification of cDNA Ends) cDNA Amplification kit (Clontech, CA). Specific primers used for RACE were designed based on *hsp* sequences identified in the *E. pela* transcriptome (Yang et al. 2012). Primer sequences for *hsp21.5*, *hsp21.7*, *hsp70*, and *hsc70* used in 5'- and 3'-RACE are listed in Table 1. PCR products from 5'- and 3'-RACE reactions were cloned into the pGEM T-Easy vector (Promega, Shanghai, China) and sequenced. Assembly of all sequences of cDNA products was done by using DNAMAN software (version 6.0, Lynnon Corporation; http://www.lynnon.com/pc/pemain_new.html).

Amplification of Genomic DNA. Genomic DNA was isolated from adult female *E. pela* using DNeasy Blood & Tissue kit (Qiagen, Dusseldorf, Germany). Primers (Table 1) located in the 5'- and 3'-untranslated regions (UTRs) of *hsc70* cDNA were used to amplify *hsc70* genomic DNA. Thermal cycling conditions were as follows: 94°C for 4 min followed by 31 cycles of 94°C for 1 min, 56°C for 1 min, and 72°C for 5 min, with a final extension at 72°C for 10 min.

Sequence Analysis. Amino acid sequences of insect Hsps were downloaded from NCBI after BLAST search (<http://www.ncbi.nlm.nih.gov/blast/Blast.cgi>). Sequence alignments were conducted by using DNAMAN. Open reading frames (ORFs) were identified using the ORF Finder (<http://www.ncbi.nlm.nih.gov/gorf/gorf.html>). Molecular mass of the predicted proteins was calculated using the Compute pI/Mw program available online (http://www.expasy.ch/tools/pi_tool.html), and *E. pela* Hsps were named according to their predicted molecular mass.

Table 1. Primers used in the study

Gene	5'- to 3'-Primer sequences	
Primers used in RACE		
<i>hsp20.5</i>	5'-1	GGGCCTCAACTGTCAATACACCATCT
	5'-2	TTGTCCACCGTCTTGACCACGATTTCC
	3'-1	CGACTAGCACCTCAAATACCGT
	3'-2	TGAAGCTGCGATTGCGACGTGAG
<i>hsp20.7</i>	5'-1	TAGCTGAGGTATTGTCGCGAGTGAT
	5'-2	CCTCGATGACCAAATAATCGTCCACAAT
	3'-1	GTTTCAGCAATTCAAACCCGAAGAAAT
	3'-2	CGCCAATTCACACGTCGTACAGATT
<i>hsp70</i>	5'-1	CGATTTCTCCTTTGACAGTCTTCT
	5'-2	GTCGATCTAAACAAGTCCGAGCAACAAT
	3'-1	GATTAAGGATGAGGACGAGAAACAG
	3'-2	GAACACGTTGGCCGAGAAAGATGAGTAT
<i>hsc70</i>	5'-1	TCCAACCGGCAATCGTTTCGTTACAT
	5'-2	GTCTTTGCTAAGTCTACCCCTTGCGTT
	3'-1	GCCAACGGTATTTGAATGTGAGT
	3'-2	CGCCGGTTGGACTCGAATCAATTAGCT
Primers used in genomic DNA clone		
<i>hsc70</i>	5'	ACGGTGAAACTGAAACTGAAG
	3'	CTCCAGCGACATTGTATTATTC
Primers used in RT-PCR		
<i>hsp20.5</i>	F	GATAACGAGTTCAGCAGCAT
	R	TGGATACGGTATTGAGGTG
<i>hsp20.7</i>	F	GCCAATTCACACGTCGTTAC
	R	CGGAGCAACAATCGATAGGA
<i>hsp70</i>	F	CTCGTGGTATCCCTCAAATC
	R	CCTCCTTGACAGTCTTCT
<i>hsc70</i>	F	ACGGTATTTGAATGTGAGT
	R	TCTTCAACGGTCTTTCAT
<i>β-actin</i>	F	CCACGAGACGACCTACAAT
	R	CGATCCATACGGAGTACT

A neighbor-joining tree was constructed using the Poisson-correction distance method (Nei and Kumar 2000) based on the full-length amino acid sequences. Alignment of the selected amino acid sequences was first performed using the CLUSTALX1.83 software (Thompson et al. 1997) and then imported to MEGA5.0. Phylogenetic trees were generated using the neighbor-joining method and bootstrapped with 1,000 iterations to evaluate the branch strength of the tree. Bootstrap percentages of 1,000 replicates that were >50% were shown at the nodes (Tamura et al. 2011). *sHsp* from *Arabidopsis thaliana* and *Glycine max* were used as outgroups.

qRT-PCR Analysis. Specific primer pairs were designed based on the sequences of *hsp*s and *β -actin* from *E. pela* (Table 1). qRT-PCR was performed on a CFX96 Real-Time PCR Detection System in 20 μ l reactions that included 10 μ l SsoFast EvaGreen Supermix (Bio-Rad, CA), 1 μ l of each of the forward and reverse primers (20 μ M), and 2 μ l of cDNA template. PCR cycling conditions were as follows: initial denaturation at 95°C for 3 min, followed by 30 cycles at 95°C for 10 s and 55°C for 20 s. Melting curves were generated to ensure specificity of the PCR products with temperatures from 65 to 95°C, increased in 0.5°C, 5 s increments. Relative gene expression levels of each *hsp* were calculated using the $2^{-\Delta\Delta Ct}$ method (Livak and Schmittgen 2001) with *β -actin* as an internal standard for normalization. The least significant difference test at $P < 0.01$ level was performed with the DPS statistical program to analyze gene expression variations (Tang and Feng 2010).

Results

Sequence Analysis of *ep-hsp21.5* and *ep-hsp21.7*. The full-length sequences of *ep-hsp21.5* and *ep-hsp21.7* (GenBank accession numbers: KC161298 and KC161299, respectively) were 997 and 873 bp in length and contained 570 and 564 bp ORFs, respectively. The ORF of *ep-hsp21.5* encoded a putative protein of 189 amino acids with a calculated molecular mass of 21.5 kDa, and the ORF of *ep-hsp21.7* encoded a deduced protein of 187 amino acids with a molecular mass of 21.7 kDa. *ep-hsp21.5* contained a 287-bp 5'-UTR and 140-bp 3'-UTR,

whereas *ep-hsp21.7* had a 150-bp 5'-UTR and 159-bp 3'-UTR. The termination codon (TGA) was located at 855 and 712 bp, followed by the polyadenylation signal AATAA (Huang et al. 2008) in *ep-hsp21.5* and ATTAA (Beaudoing et al. 2000) in *ep-hsp21.7* (Fig. 1). Blastp comparisons of the deduced ep-Hsp21.5 amino acid sequence shared a 77% identity with sHsp of *Spodoptera litura* (ADK55519), and ep-Hsp21.7 shared a 55% identity with the putative sHsp from *Maconellicoccus hirsutus* (ABM55532). Multiple sequence alignment showed that all sequences contained the conserved α -crystallin domain (Fig. 1), indicating that the isolated *ep-hsp21.5* and *ep-hsp21.7* sequences were *shsps*.

The phylogenetic tree analysis showed that ep-Hsp21.7 was clustered into the species-specific sHsp group, whereas ep-Hsp21.5 was clustered into the orthologous sHsp group (Fig. 2).

Sequence Analysis of *ep-hsp70* and *ep-hsc70*. Full-length cDNA sequences of *ep-hsp70* (GenBank accession number: KC161300) and *ep-hsc70* (GenBank accession number: KC161301) were 2,355 and 2,417 bp in length with 1,908 and 1,962 bp, respectively. *ep-hsp70* encoded a deduced protein of 635 amino acids with a calculated molecular mass of 69.8 kDa. *ep-hsc70* encoded a deduced protein of 653 amino acids with a calculated molecular mass of 71.6 kDa. *ep-hsp70* contained a 182-bp 5'-UTR and 265-bp 3'-UTR, whereas *ep-hsc70* contained a 181-bp 5'-UTR and 274-bp 3'-UTR. The termination codon (TAA) was present at 2,088 (*hsp70*) and 2,141 (*hsc70*) bp, followed by the polyadenylation signal (AATAAA) and a poly (A) tail. Three characteristic signature sequences of the Hsp70 family were observed in the amino acids sequences of ep-Hsp70 and ep-Hsc70, including IDLGGTTYS, IFDLGGGTFDVSIL, and IVLVGGSTRIPKIQK (Figs. 3

and 4). The conserved motif EEVD usually present in the C-terminus of cytoplasmic Hsp70 was altered to DEVD in ep-Hsp70. A Blastp search revealed that the deduced amino acid sequence of ep-Hsp70 shared an 81% identity with *Bemisia tabaci* Hsp70 (ADO14473) and ep-Hsc70 shared a 92% identity with *Nilaparvata lugens* Hsc70 (ADE34170).

The phylogenetic tree analysis of Hsp70 showed that ep-Hsp70 was clustered together with inducible Hsp70, whereas ep-Hsc70 was clustered with cognate Hsc70 of other species. However, both ep-Hsp70 and ep-Hsc70 were clustered with cytoplasmic Hsp70 (Fig. 5).

The genomic DNA sequence of *hsc70* (GenBank accession number: KC161301) had four introns, which were 1,139, 255, 514, and 94 bp in length. The first intron was the longest from 173 to 1,311 bp and located in the 5'-UTR, whereas the remaining three introns were located in the coding regions, from 1,526 to 1,780 bp, 1,930 to 2,443 bp, and 2,652 to 2,745 bp, respectively (Fig. 4). The intron-exon junctions of the first three introns followed the GT-AG rule, whereas the fourth intron-exon junction was AG-TC.

Expression of the *ep-hsps* in Female and Male *E. pela* Under Temperature Stress. qRT-PCR revealed that in females, the mRNA expression levels of all four *hsps* were correlated with heat stress. In adult females at 33°C, the expression of *hsp21.7* and *hsp70* were drastically upregulated by 65.02 and 145.31 folds, respectively, over the control expression at 25°C (Fig. 6B and C). mRNA expression of *hsp21.5* and *hsc70* was also significantly upregulated, when compared with the control (Fig. 6A and D).

In male second-stage larvae, mRNA levels of *hsp21.7* increased when the temperatures were between 33 and 39°C and peaked at 39°C,

```

1 ACATGGGGAGTTTATCAITGATAACGGTGTGCTAGCAGACGTTCTTCTCAGCGTATTATTGCAGGAATTTTTTCGCCGCTGGTTTTTA
91 CGTTTCATTAGTTGCGATTTATTCATTTGTTTATTTCTTTTGGTGGTGATTGAATTTCCGCGTCTTTTATTGTAATTCGACGCGGATTT
181 TCAGCAGTTTTAACTGATTTTTCTACGAATTTTTCTCTTTGGTTTTTCGCGTCTACTACTCTTTTTCATCGTTGTTGTTTTTGCT
271 TAGTGCTATCCACACAAATGTCTGACAGCGGACGTAACACAAATATCCCAATCAAATGGGCGACTTCAACGTGATTGATAACGAGTTCA
1 M S D S G R K H N I P I K L G D F N V I D N E F
361 GCAGCATTCCGGAACCGTTTCGACGCTGAAATGCGTAAAATGGAAGACGAGATGACCAAATTCGGTCTGAATTGATGAAATCCGAGTGGAA
25 S S I R E R F D A E M R K M E D E M T K F R S E L M N R E S
451 ACTTTTTCAAACATCGACTAGCACCTCAAATACCGTATCCAGCAGTTCACTAGACAATCAGGGAGCGCAGCACAGAAACAACCTGGTTGG
55 N F F K T S T S T S N T V S S S S L D N Q G A Q H K N T W L
541 ACAACATTAATTCGCCCTCATCCAGGAAGATGGCGACGCAAAAGTCTGAAGCTGCGATTGAGCTGAGCCAATACCAGCCGGAGGAAA
85 D N I N S P L I Q E D G D G K S L K L R F D V S Q Y Q P E E
631 TCGTGGTCAAGCGTGGACAACAAATATTGTTTATGCTAAACAGAAAGAAAATCCGACACAAAATCCGTTACCGGAAATCAACC
115 I V V K T V D N K L L V H A K H E E K S D T K S V Y R E Y N
721 GTGAATCTTGTGCCAAAGGTACGAATCCGGAGACCATCAAGTCGTGCTGAGCAAAAGATGGTGTATTGACAGTTGAGGCCCGCTTAC
145 R E F L L P K G T N P E T I K S S L S K D G V L T V E A P L
811 CGTTCTGGCAGTCCAGAAAAGTGTATCAAAATGACAAAAATGAACACTGTATTGAATCGCCAGAAAGTATTTTTTAAATAATTTT
175 P V L A G P E K L I P I D K K *
901 AAAATCGTAATTTAAAAACAAAAAAGTATATTATGTTTTAAAGAAAAAGAACTAAAAGGAGAACCAAAAAAAAAAAAAAAAAAAAAA
991 AAAAAA
ep-hsp21.5

1 ACATGGGGTTTTTACTGATTTCAGTATTCGTAGTATTTTTGCCGTTAGTCGTTATTCATGTGAGTTTGAATCGTTTAAAGTGAAGTGT
91 CATTTCGTACTCGATAAATCGTAGTTAGTGTTCAAAAGCGTCTTCAATTTCTGGCAAAGATGCTGTAACCGTATCGGTTGAACGAC
1 M S V L P Y A L N D
181 TGGTGTACAGTACCCGCTGATCTTTTAGTCTGCTGTAACGATCAACACTTCGGTATGGGTGTTTGTATGATGATATCATGCTGAATAGA
11 W W Y D A R D P F S R L Y D Q H F G M G V F D D D I M L N R
271 CCTTCGTGGCACCTCTTACCGTCTCTTTCGGGCTGGATACCTGCGGACGCTGAGAACGTTGTGTTGGAAGACAGTGGTGTCTGCTA
41 P S W A P L T V P L R S G Y L R T L R P F V L E D S G V S S
361 GTCGAAAATGAGGAAGATAAAGTGAAGATCAATCTAGACGTTACGAAATCAACCCGAAAGAAATAGCGTTAAAATTTGGACGATTAT
71 V E N E E D K V K I N L D V Q Q F K P E E I S V K I V D D Y
451 TTGGTCATCGAGGAAACCGAAGAAAACAGATCAGCACGGTTACGTATCGCGCAATTCACACGTCGTTACAGATTGCCGGAAAAT
101 L V I E G N H E E K Q D Q H G Y V S R Q F T R R Y R L P E N
541 ATCATAAAGATGATATTTCCAGTTCCGATTTCTCAGATGGAGTCTTATCGATTGTTGCTCCGAAAAACCGAAGCCATAAGAAATCAA
131 I I K D D I S S S I S S D G V L S I V A P K K P E A I R N Q
631 ACTGAGGCAAATTCOGATCACTCGCAGCAATACCTCAGCTATAAAACATAAAGGGGAGTAAAATGAGAGAAAAAATAGAAATCGT
161 T E R Q I P I T R T N T S A I K H N K G S E N E R K K *
721 CGAATCGGCATCGTTATTCTGTAACAGCTTATTATTTCCCTTGAATAATCTATGTGGACTGATCAGGCGGTGAGAGCTGTTTTATGTT
811 ACCCAAAAATTAATAATTTTATTTTCCGATCAAAAAAAAAAAAAAAAAAAAAAAAAAAAAA
ep-hsp21.7

```

Fig. 1. Complete nucleotide and deduced amino acid sequences of *ep-hsp21.5* and *ep-hsp21.7* cloned from *E. pela*. Translation termination codon is marked with an asterisk, putative polyadenylation signal is boxed, and the alpha-crystallin domain is underlined.

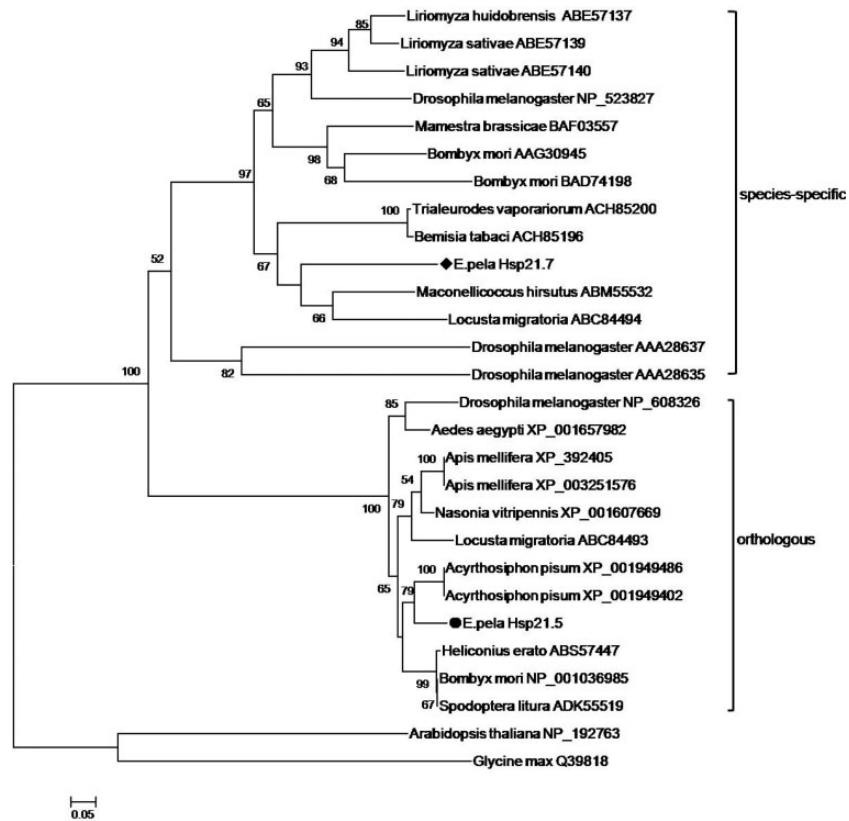


Fig. 2. Phylogenetic analysis of Hsp20 sequences. Some orthologous sequences used in this analysis are from Li et al. (2009). Sequence labels are denoted by the species names and GenBank accession numbers. Black diamond indicates the sequence of ep-Hsp21.7, and black round indicates the sequence of ep-Hsp21.5.

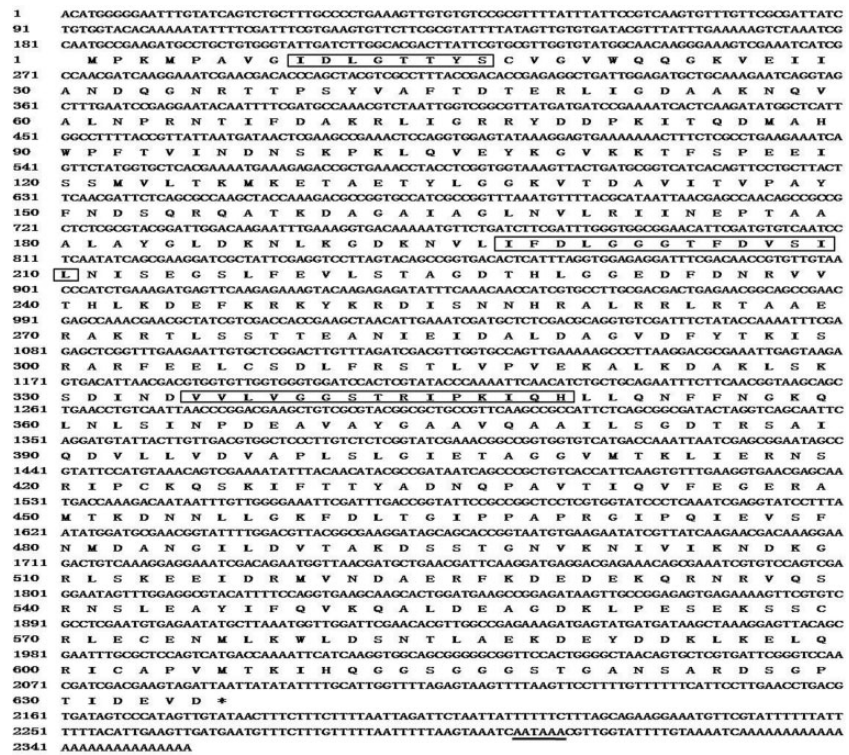


Fig. 3. The complete nucleotide and deduced amino acid sequences of ep-hsp70 cloned from *E. pela*. The three characteristic signature sequences of the Hsp70 family are boxed. Translation termination codon is marked with an asterisk, and the putative polyadenylation signal is underlined.

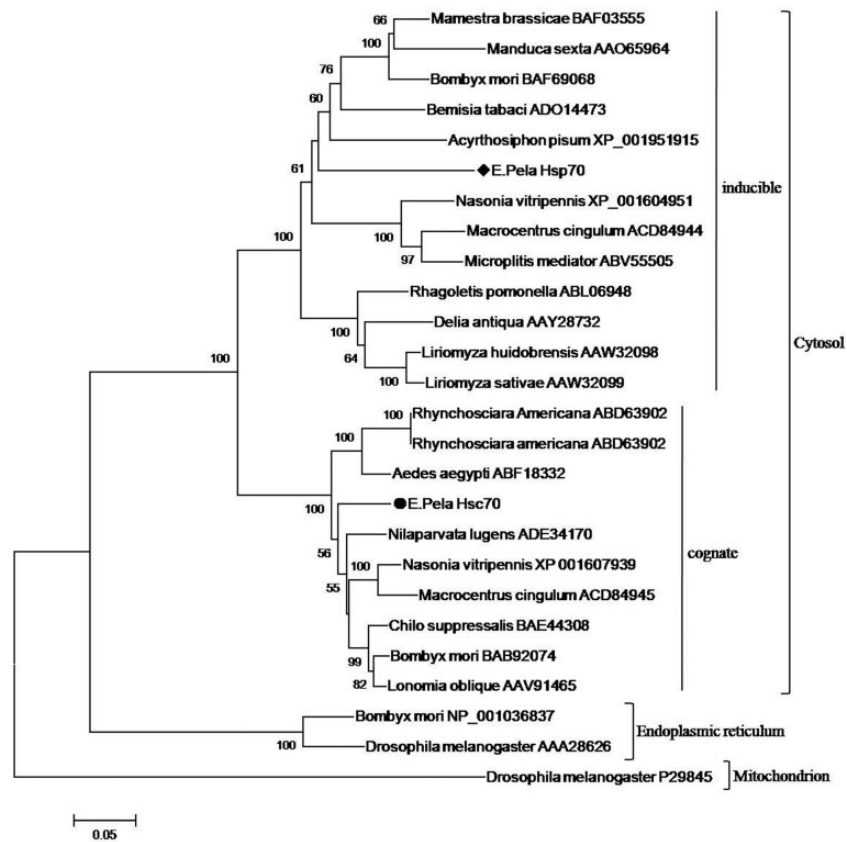


Fig. 5. Phylogenetic analysis of Hsp70 sequences. Some sequences used in this analysis are previously reported by other groups (Huang et al. 2008, Xu et al. 2010, Aruda et al. 2011). Sequence labels are denoted by the species names and GenBank accession numbers. Black diamond indicates the sequence of ep-Hsp70, and black round indicates the sequence of ep-Hsc70.

but are not inducible in response to environmental stresses. They are involved in basic metabolic processes. On the other hand, *shsps*, including *ep-hsp21.7*, in the species-specific group are clustered in specific insect order. These intron-less *shsps* are important in responses to temperature stimuli and display remarkable mRNA expression differences in mRNA expression levels during insect development. Although most insect sHsps identified so far are species specific, many orthologous sHsps have also been identified in insects, nematodes (Lillibridge et al. 1996), amphibians (Franck et al. 2004), and mammals (Kampinga et al. 2009). However, orthologous and species-specific sHsps may be involved in various functions in different insects (Shen et al. 2011).

In *E. pelsa* females, *ep-hsp21.5* was upregulated in larval stages, and expression in adults was also significantly higher than expression measured in eggs. Similar upregulation was also observed during male insect development, suggesting a correlation between *ep-hsp21.5* and the developmental regulation of female and male *E. pelsa*. In male larvae, *ep-hsp21.5* was not sensitive to heat stimuli, whereas, in female adults, *ep-hsp21.5* was upregulated significantly by the heat- and cold-stress treatments, which may explain why *E. pelsa* female adults can persist in -30°C temperatures in Changchun, China. The expression pattern of *ep-hsp21.5* in larval stage was consistent with the expression of orthologous *shsps* in most insects.

In contrast, *ep-hsp21.7* was more sensitive to the heat or cold stimulus than *hsp21.5*, indicating that this gene may play more important role in temperature-stress tolerance than *hsp21.5*. Our data were also consistent with studies in *Bombyx mori*, in which heat shock triggered a massive increase of six species-specific *shsps* but not the orthologous *hsp21.4* (Sakano et al. 2006). However, *ep-hsp21.7* was upregulated drastically at the second larval stage, when the wax secretion in males is at the maximum. Studies to investigate the ecological adaptability of

E. pelsa and analyses of climatic factors that affect wax secretion have suggested that wax secretion is an ecological strategy and a protective response to severe environmental conditions (Chen et al. 2007b). Thus, *ep-hsp21.7* was presumed to be correlated with the protective response to environment stress by secreting wax.

The members of the Hsp70 family are found to be present in the cytoplasm, mitochondria, endoplasmic reticulum, and chloroplast depending on the sequences specific to the each cellular organelle. For example, cytoplasmic Hsp70 has the specific motif EEVD. Phylogenetic analysis revealed the two ep-Hsp70 of *E. pelsa* were clustered to the group of cytoplasm Hsp70 by their cellular localization rather than insect orders. The expression of *ep-hsp70* was inducible and the expression of *ep-hsc70* was constitutive. Usually, *hsc70* genes have introns, whereas most *hsp70* genes have no introns, which may facilitate their rapid transcription during stress because no mRNA splicing is needed. In this study, *ep-hsp70* was typically induced by temperature shock, especially in adults. It was also drastically upregulated in larval stage of male second-stage larvae. However, significantly high expression level was detected in both female adults (FA3) and male adults, indicating that this gene may be correlated with the development of adults.

Generally, when compared with *hsp70*, *hsc70* is constitutively expressed in many insects and does not significantly change under conditions of stress (Shim et al. 2006, Colinet et al. 2009, Košťál and Tollarová-Borovanská 2009). In *E. pelsa*, *ep-hsc70* was upregulated during the development of females and males, indicating that it may be associated with development. In addition, *ep-hsc70* did not respond to heat shock at the larval stage (male second-stage larvae), which was consistent with many reports about *hsc70*. However, *ep-hsc70* was sensitive to heat or cold stimulus in adult stages (female adults). The results of this study showed that *ep-hsc70* was responsible to the heat or

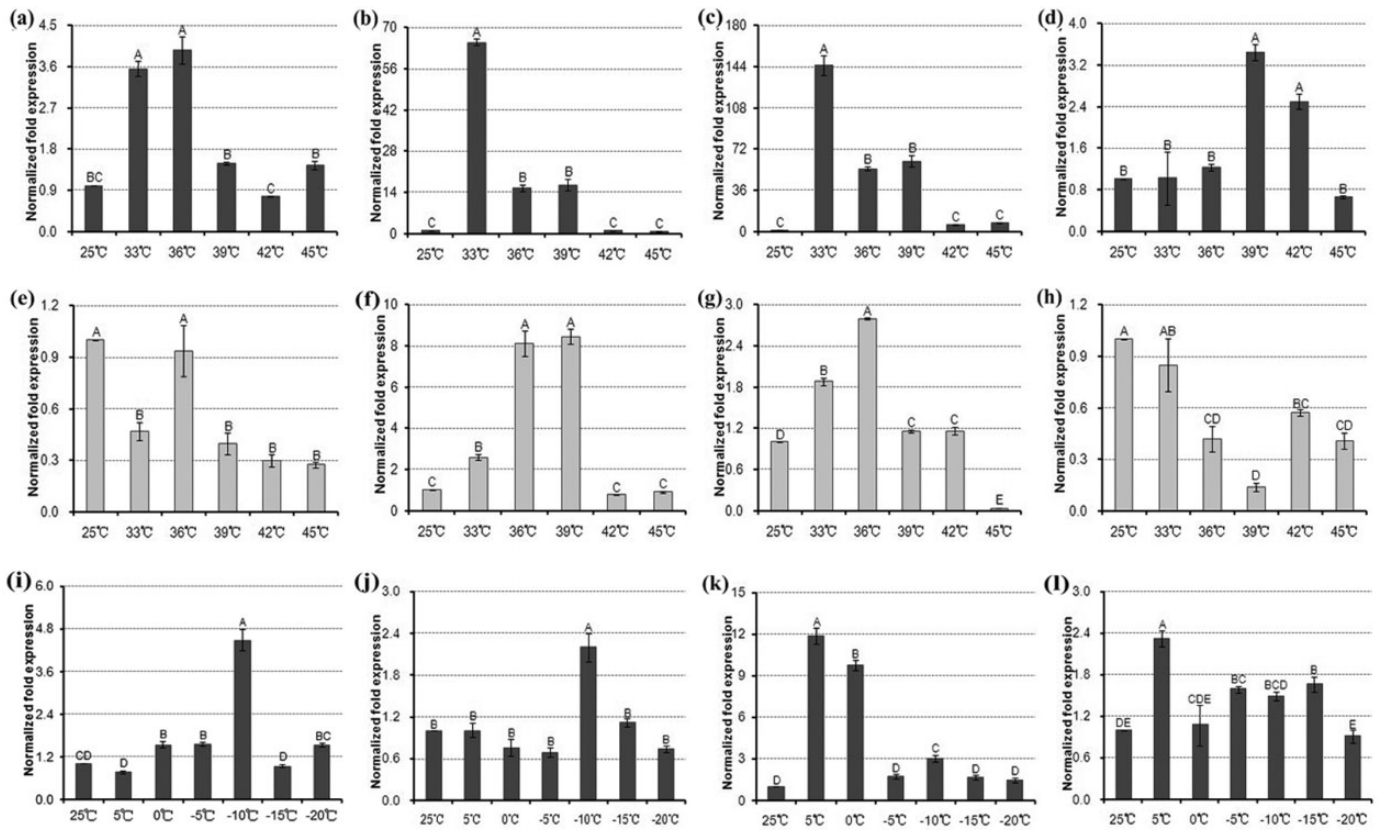


Fig. 6. Relative mRNA expression levels of each *hsp* under temperature stresses. *hsp21.5* (a), *hsp21.7* (b), *hsp70* (c), *hsc70* (d) in female *E. pela* under heat shock, *hsp21.5* (e), *hsp21.7* (f), *hsp70* (g), *hsc70* (h) in male *E. pela* under heat shock, *hsp21.5* (i), *hsp21.7* (j), *hsp70* (k), *hsc70* (l) in female *E. pela* under cold shock. The values are mean \pm SE of three replicates for each of the treatments; 25°C is the control. Letters above columns indicate levels of difference significance at $P < 0.01$. The same letters are not significantly different, $P > 0.01$.

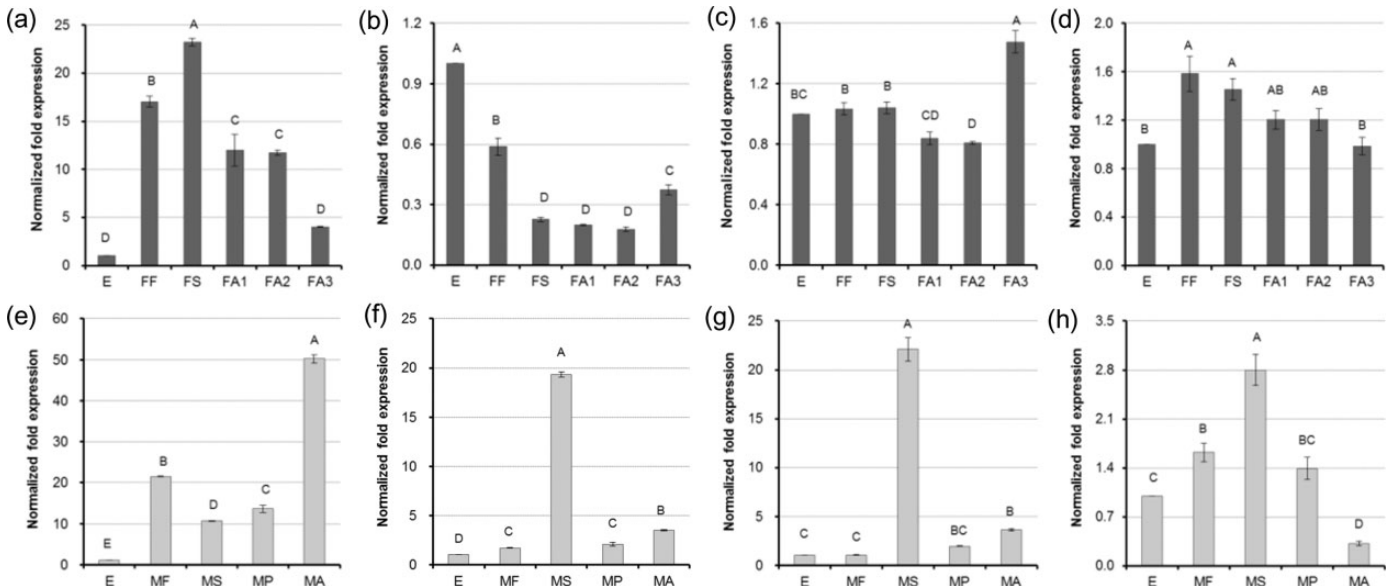


Fig. 7. Relative mRNA expression levels of *hsp*s at different developmental stages in both female and male *E. pela*. *hsp21.5* (a), *hsp21.7* (b), *hsp70* (c), and *hsc70* (d) in female *E. pela*; *hsp21.5* (e), *hsp21.7* (f), *hsp70* (g), and *hsc70* (h) in male *E. pela*. E, mixture of female and male eggs; FF, female first-stage larvae; FS, female second-stage larvae; FA1, early female adults; FA2, mid female adults; FA3, late female adults; MF, male first-stage larvae; MS, male second-stage larvae; MP, male pupae; MA, male adults. Eggs are the control. Letters above columns indicate levels of difference significance at $P < 0.01$. The same letters are not significantly different, $P > 0.01$.

cold-stress treatments in female adults, suggesting that this gene may be correlated with temperature–stress tolerance of the female insect in extreme temperatures. The special expression pattern of *hsc70* was also reported in *Pteromalus puparum* (Wang et al. 2008) and *Sarcophaga crassipalpis* (Rinehart et al. 2000).

As a chaperone molecule, *hsp*s have been thought to be involved in insect developmental processes. Specifically, they play vital roles in cell differentiation, cell cycle regulation, and embryonic development (Mahroof et al. 2005, Tachibana et al. 2005, de Andrade et al. 2009, Zhang and Denlinger 2010). *E. pela* has intriguing biological characteristics, but not much is known about the expression patterns of *hsp*s at extreme temperatures. This study revealed that *ep-hsp21.5*, *ep-hsp21.7*, *ep-hsp70*, and *ep-hsc70* may be correlated with heat or cold-stress tolerance in female adults, whereas *ep-hsp21.7* and *ep-hsp70* could be correlated with heat stress in male larvae. The four *ep-hsp*s may be involved in the developmental regulation of males, and *ep-hsp21.5*, *ep-hsp70*, and *ep-hsc70* may be critical for developmental regulation of females. However, the physiological functions of these *ep-hsp*s during development of *E. pela* need further investigation.

Acknowledgments

This work was supported by the Special Fund for Forestry Research in the Public Interest (201204602, 201304808), the National Natural Science Foundation of China (Youth Program; 31000983), the Applied Basic Research Foundation of Yunnan Province (2010ZC235), and a National Nonprofit Institute Research Grant of Research Institute of Resources Insects, Chinese Academy of Forestry (riricaf200904M-3, riricaf2011006M).

References Cited

- Aruda, A. M., M. F. Baumgartner, A. M. Reitzel, and A. M. Tarrant. 2011. Heat shock protein expression during stress and diapause in the marine copepod *Calanus finmarchicus*. *J. Insect Physiol.* 57: 665–675.
- Beaudoin, E., S. Freier, J. R. Wyatt, J. M. Claverie, and D. Gautheret. 2000. Patterns of variant polyadenylation signal usage in human genes. *Genome Res.* 10: 1001–1010.
- Chen, X. M. 2011. Regularity of wax secretion, pp.65–79. In X. M. Chen (ed.), *Natural population ecology of *Ericerus pela**. Science Press, Beijing, China.
- Chen, X. M., and Y. Feng. 2009. The Chinese white wax scale *Ericerus pela* Chavannes, pp. 29–30. In X. M. Chen and Y. Feng (eds.), *An introduction to resource entomology*. Science Press, Beijing, China.
- Chen, X. M., Z. Wang, Y. Chen, S. Wang, and Y. Feng. 2007a. The main climate factors affecting wax excretion of *Ericerus pela* Chavannes (Homoptera: Coccidae) and an analysis of its ecological adaptability. *Acta Entomol. Sin.* 50: 136–143.
- Chen, X. M., Z. Wang, Y. Chen, S. Ye, S. Wang, and Y. Feng. 2007b. The impact of environmental factors on the wax excretion by Chinese white wax scale (*Ericerus pela* Chavannes). *Acta Ecol. Sin.* 27: 103–112.
- Chen, X. M., Z. L. Wang, Y. Chen, J. J. Zhao, S. D. Ye, and S. Y. Wang. 2008. Age-specific life table of Chinese white wax scale (*Ericerus pela*) natural population and analysis of death key factors. *Forest Res.* 44: 87–94.
- Chen, X. M., Z. L. Wang, Y. Chen, J. J. Zhao, S. D. Ye, and S. Y. Wang. 2011. Design and analysis of a system for breeding white wax scale insects and producing insect wax in the same region. *Forest Res.* 46: 106–113.
- Colinet, H., S. F. Lee, and A. Hoffmann. 2009. Temporal expression of heat shock genes during cold stress and recovery from chill coma in adult *Drosophila melanogaster*. *FEBS J.* 277: 174–185.
- de Andrade, A., F. Siviero, P. Rezende-Teixeira, R. V. Santelli, and G. M. Machado-Santelli. 2009. Molecular characterization of a putative heat shock protein cognate gene in *Rhynchosciara americana*. *Chromosome Res.* 17: 935–945.
- Dunning, L. T., A. B. Dennis, D. C. Park, B. J. Sinclair, R. D. Newcomb, and T. R. Buckley. 2012. Identification of cold-responsive genes in a New Zealand alpine stick insect using RNA-Seq. *Comp. Biochem. Physiol. Part D Genomics Proteomics* 8: 24–31.
- Feder, M. E. and G. E. Hofmann. 1999. Heat-shock proteins, molecular chaperones, and the stress response: evolutionary and ecological physiology. *Annu. Rev. Physiol.* 61: 243–282.
- Franck, E., O. Madsen, T. van Rheede, G. Ricard, M. A. Huynen, and W. W. de Jong. 2004. Evolutionary diversity of vertebrate small heat shock proteins. *J. Mol. Evol.* 59: 792–805.
- Gething, M. J., and J. Sambrook. 1992. Protein folding in the cell. *Nature* 355: 33–45.
- Hanazono, Y., K. Takeda, M. Yohda, and K. Miki. 2012. Structural studies on the oligomeric transition of a small heat shock protein, StHsp14. 0. *J. Mol. Biol.* 422: 100–108.
- Huang, L. H., C. Z. Wang, and L. Kang. 2009. Cloning and expression of five heat shock protein genes in relation to cold hardening and development in the leafminer, *Liriomyza sativa*. *J. Insect Physiol.* 55: 279–285.
- Huang, P. Y., S. T. Kang, W. Y. Chen, T. C. Hsu, C. F. Lo, K. F. Liu, and L. L. Chen. 2008. Identification of the small heat shock protein, HSP21, of shrimp *Penaeus monodon* and the gene expression of HSP21 is inactivated after white spot syndrome virus (WSSV) infection. *Fish Shellfish Immunol.* 25: 250–257.
- Jiao, Y., and P. Zhao. 1999. The species and community structure of white wax insect natural enemy in different production area in the oviposition period. *Acta Entomol. Sin.* 21: 1148–1152.
- Kampinga, H.H., J. Hageman, M. J. Vos, H. Kubota, R. M. Tanguay, E. A. Bruford, M. E. Cheetham, B. Chen, and L. E. Hightower. 2009. Guidelines for the nomenclature of the human heat shock proteins. *Cell Stress Chaperones* 14: 105–111.
- Košťál, V., and M. Tollarová-Borovanská. 2009. The 70 kDa heat shock protein assists during the repair of chilling injury in the insect, *Pyrrhocoris apterus*. *PLoS One* 4: e4546.
- Lalouette, L., C. Williams, F. Hervant, B. J. Sinclair, and D. Renault. 2011. Metabolic rate and oxidative stress in insects exposed to low temperature thermal fluctuations. *Comp. Biochem. Physiol. A Mol. Integr. Physiol.* 158: 229–234.
- Li, Z. W., X. Li, Q. Y. Yu, Z. H. Xiang, H. Kishino, and Z. Zhang. 2009. The small heat shock protein (sHSP) genes in the silkworm, *Bombyx mori*, and comparative analysis with other insect sHSP genes. *BMC Evol. Biol.* 9: 215.
- Lillibridge, C. D., W. Rudin, and M. T. Philipp. 1996. *Dirofilaria immitis*: ultrastructural localization, molecular characterization, and analysis of the expression of p27, a small heat shock protein homolog of nematodes. *Exp. Parasitol.* 83: 30–45.
- Livak, K. J., and T. D. Schmittgen. 2001. Analysis of relative gene expression data using real-time quantitative PCR and the $2^{-\Delta\Delta CT}$ method. *Methods* 25: 402–408.
- Lopez-Martinez, G., J. B. Benoit, J. P. Rinehart, M. A. Elnitsky, R. E. Lee, and D. L. Denlinger. 2009. Dehydration, rehydration, and overhydration alter patterns of gene expression in the Antarctic midge, *Belgica antarctica*. *J. Comp. Physiol. B Biochem. Syst. Environ. Physiol.* 179: 481–491.
- Lü, Z. C., and F. H. Wan. 2011. Using double-stranded RNA to explore the role of heat shock protein genes in heat tolerance in *Bemisia tabaci* (Gennadius). *J. Exp. Biol.* 214: 764–769.
- Mahroof, R., K. Y. Zhu, L. Neven, B. Subramanyam, and J. Bai. 2005. Expression patterns of three heat shock protein 70 genes among developmental stages of the red flour beetle, *Tribolium castaneum* (Coleoptera: Tenebrionidae). *Comp. Biochem. Physiol. A Mol. Integr. Physiol.* 141: 247–256.
- Michaud, M. R., N. M. Teets, J. T. Peyton, B. M. Blobner, and D. L. Denlinger. 2011. Heat shock response to hypoxia and its attenuation during recovery in the flesh fly, *Sarcophaga crassipalpis*. *J. Insect Physiol.* 57: 203–210.
- Morrow, G., and R. M. Tanguay. 2012. Small heat shock protein expression and functions during development. *Int. J. Biochem. Cell Biol.* 44: 1613–1621.
- Nei, M., and S. Kumar. 2000. *Molecular evolution and phylogenetics*. Oxford University Press, Oxford, United Kingdom.
- Planelló, R., O. Herrero, J. L. Martínez-Guitarte, and G. Morcillo. 2011. Comparative effects of butyl benzyl phthalate (BBP) and di (2-ethylhexyl) phthalate (DEHP) on the aquatic larvae of *Chironomus riparius* based on gene expression assays related to the endocrine system, the stress response and ribosomes. *Aquat. Toxicol.* 105: 62–70.
- Reiskind, M. H., and A. A. Zarrabi. 2012. Is bigger really bigger? Differential responses to temperature in measures of body size of the mosquito, *Aedes albopictus*. *J. Insect Physiol.* 58: 911–917.
- Rinehart, J. P., G. D. Yocum, and D. L. Denlinger. 2000. Developmental upregulation of inducible hsp70 transcripts, but not the cognate form, during pupal diapause in the flesh fly, *Sarcophaga crassipalpis*. *Insect Biochem. Mol. Biol.* 30: 515–521.
- Sakano, D., B. Li, Q. Xia, K. Yamamoto, H. Fujii, and Y. Aso. 2006. Genes encoding small heat shock proteins of the silkworm, *Bombyx mori*. *Biosci. Biotechnol. Biochem.* 70: 2443–2450.
- Sanders, B. M. 1993. Stress proteins in aquatic organisms: an environmental perspective. *Crit. Rev. Toxicol.* 23: 49–75.

- Sang, W., W. H. Ma, L. Qiu, Z. H. Zhu, and C. L. Lei. 2012. The involvement of heat shock protein and cytochrome P450 genes in response to UV-A exposure in the beetle *Tribolium castaneum*. *J. Insect Physiol.* 58: 830–836.
- Shen, Y., J. Gu, L. H. Huang, S. C. Zheng, L. Liu, W. H. Xu, Q. L. Feng, and L. Kang. 2011. Cloning and expression analysis of six small heat shock protein genes in the common cutworm, *Spodoptera litura*. *J. Insect Physiol.* 57: 908–914.
- Shim, J. K., D. M. Ha, S. K. Nho, K. S. Song, and K. Y. Lee. 2008. Upregulation of heat shock protein genes by envenomation of ectoparasitoid *Bracon hebetor* in larval host of Indian meal moth *Plodia interpunctella*. *J. Invertebr. Pathol.* 97: 306–309.
- Shim, J. K., D. O. Jung, J. W. Park, D. W. Kim, D. M. Ha, and K. Y. Lee. 2006. Molecular cloning of the heat-shock cognate 70 (Hsc70) gene from the two-spotted spider mite, *Tetranychus urticae*, and its expression in response to heat shock and starvation. *Comp. Biochem. Physiol. B Biochem. Mol. Biol.* 145: 288–295.
- Sorensen, J. G., T. N. Kristensen, and V. Loeschcke. 2003. The evolutionary and ecological role of heat shock proteins. *Ecol. Lett.* 6: 1025–1037.
- Stahl, M., M. Retzlaff, M. Nassal, and J. Beck. 2007. Chaperone activation of the hepadnaviral reverse transcriptase for template RNA binding is established by the Hsp70 and stimulated by the Hsp90 system. *Nucleic Acids Res.* 35: 6124–6136.
- Tachibana, S. I., H. Numata, and S. G. Goto. 2005. Gene expression of heat-shock proteins (*Hsp23*, *Hsp70* and *Hsp90*) during and after larval diapause in the blow fly *Lucilia sericata*. *J. Insect Physiol.* 51: 641–647.
- Tamura, K., D. Peterson, N. Peterson, G. Stecher, M. Nei, and S. Kumar. 2011. MEGA5: molecular evolutionary genetics analysis using maximum likelihood, evolutionary distance, and maximum parsimony methods. *Mol. Biol. Evol.* 28: 2731–2739.
- Tang, Q. Y., and M. G. Feng. 2010. DPS-data processing system: experimental design, statistical analysis and data mining (in Chinese), pp. 82–84. Science Press, Beijing, China.
- Thompson, J. D., T. J. Gibson, F. Plewniak, F. Jeanmougin, and D. G. Higgins. 1997. The CLUSTAL X windows interface: flexible strategies for multiple sequence alignment aided by quality analysis tools. *Nucleic Acids Res.* 25: 4876–4882.
- Wang, H., S. Dong, K. Li, C. Hu, and G. Ye. 2008. A heat shock cognate 70 gene in the endoparasitoid, *Pteromalus puparum*, and its expression in relation to thermal stress. *BMB Rep.* 41: 388–393.
- Wang, H. S., X. H. Wang, C. S. Zhou, L. H. Huang, S. F. Zhang, W. Guo, and L. Kang. 2007. cDNA cloning of heat shock proteins and their expression in the two phases of the migratory locust. *Insect Mol. Biol.* 16: 207–219.
- Xu, P., J. Xiao, L. Liu, T. Li, and D. Huang. 2010. Molecular cloning and characterization of four heat shock protein genes from *Macrocentrus cingulum* (Hymenoptera: Braconidae). *Mol. Biol. Rep.* 37: 2265–2272.
- Yang, P., J. Y. Zhu, Z. J. Gong, D. L. Xu, and X. M. Chen. 2012. Transcriptome analysis of the Chinese white wax scale *Ericerus pela* with focus on genes involved in wax biosynthesis. *PLoS One* 7: e35719.
- Zhang, C., and H. Liu. 1997. Biological characteristics and ecological environment of *Ericerus pela*, pp. 6–60. In C. J. Zhang, and H. Q. Liu (eds.), Chinese white wax scale and wax production technology. China Forestry Publishing House, Beijing, China.
- Zhang, Q., and D. L. Denlinger. 2010. Molecular characterization of heat shock protein 90, 70 and 70 cognate cDNAs and their expression patterns during thermal stress and pupal diapause in the corn ear worm. *J. Insect Physiol.* 56: 138–150.
- Zhang, Z., and Q. Zhang. 2012. Molecular cloning, characterization and expression of heat shock protein 70 gene from the oyster *Crassostrea hongkongensis* responding to thermal stress and exposure of Cu²⁺ and malachite green. *Gene* 497: 172–180.

Received 21 January 2013; accepted 17 May 2013.