



Distinguishing Male and Female Chinese Rose Beetles, *Adoretus sinicus*, with an Overview of *Adoretus* Species of Biosecurity Concern

Authors: McQuate, Grant T., and Jameson, Mary Liz

Source: Journal of Insect Science, 11(64) : 1-18

Published By: Entomological Society of America

URL: <https://doi.org/10.1673/031.011.6401>



Distinguishing male and female Chinese rose beetles, *Adoretus sinicus*, with an overview of *Adoretus* species of biosecurity concern

Grant T. McQuate^{1*} and Mary Liz Jameson²

¹USDA-ARS, U.S. Pacific Basin Agricultural Research Center (PBARC)

²Department of Biological Sciences, Wichita State University, 537 Hubbard Hall, Wichita, Kansas 67260

Abstract

The Chinese rose beetle, *Adoretus sinicus* Burmeister (Coleoptera: Scarabaeidae: Rutelinae: Adoretini), is a broadly polyphagous scarab beetle that is economically important and causes damage to a wide variety of host plants including agricultural crops and ornamentals in Southeast Asia, China, the Hawaiian Islands and several other Pacific Islands. The species has become established in numerous regions and is of biosecurity concern because importation of this species to other regions poses a threat to agriculture due to its generalist herbivore feeding habits. Field and laboratory research directed towards control of the species is hampered by the lack of characteristics that allow accurate determination of the sexes on live beetles in the field. Here, three recognizable and reliable non-destructive morphological differences between the sexes of *A. sinicus* are documented: (1) the form of the terminal sternite; (2) the length to width ratio of protarsomere 1, and; 3) the ratio of the combined length of protarsomeres 2-4 to the length of protarsomere 1. Because many *Adoretus* species are of biosecurity concern, and because tools to identify *Adoretus* species are lacking, we review the natural history and research on control associated with *A. sinicus* as well as the genus as a whole.

Keywords: Scarabaeidae, invasive species

Correspondence: ^{a*} grant.mcquate@ars.usda.gov, ^b maryliz.jameson@gmail.com, *Corresponding author

Received: 26 March 2010, **Accepted:** 21 January 2011

Copyright : This is an open access paper. We use the Creative Commons Attribution 3.0 license that permits unrestricted use, provided that the paper is properly attributed.

ISSN: 1536-2442 | Vol. 11, Number 64

Cite this paper as:

McQuate GT, Jameson ML. 2011. Distinguishing male and female Chinese rose beetles, *Adoretus sinicus*, with an overview of *Adoretus* species of biosecurity concern. *Journal of Insect Science* 11:64 available online: insectscience.org/11.64

Introduction

In the Hawaiian Islands, the introduction of non-native animals and plants has caused millions of dollars in crop losses, extinction of native species, destruction of native forests, and in excess of \$40.8 million in government-sponsored spending in 2006 for biosecurity initiatives (Hawaii Department of Land and Natural Resource 2008). Well over 2,500 arthropod species have been introduced to the Hawaiian Islands with continued establishment rates at an alarming ten to twenty species per year (Asquith 1995). One non-native species in the Hawaiian Islands is the Chinese rose beetle, *Adoretus sinicus* Burmeister (Coleoptera: Scarabaeidae: Rutelinae: Adoretini) (Figures 1-2). The species is native to Japan and Taiwan (Mau and Kessing 1991), but its distribution now also includes China (including Hong Kong), Indonesia, Cambodia, Singapore, Thailand, Vietnam, the Marianas Islands, the Caroline Islands and the Hawaiian Islands (CAB International 1981). In the Hawaiian Islands, it was first reported on Oahu in 1891 (Riley and Howard 1893). By 1893, the species was "rapidly becoming a most serious pest" (Riley and Howard 1893). Initial identification provided the name *Adoretus umbrosus* L.; later, it was referred to as *A. tenuimaculatus* Waterhouse (Pemberton 1964). Nineteen years after its noted pest status, the German ruteline systematist Friedrich Ohaus correctly identified the beetle as *A. sinicus*.

Adoretus sinicus probably came to Hawaii in the larval stage in soil with imported plants from China, Taiwan, Java, or Timor (Ohaus 1935; Pemberton 1964). By 1898 it was established on all major Hawaiian Islands (Koebele 1898), and in 1917 it was referred to as "one of the worst garden pests of the

Islands" (Muir 1917). In areas where it has been introduced, adults can cause heavy damage to crops and ornamental plants. Despite much research devoted to control of the species (including pesticides, parasitoids, pathogens, and pheromones) control has been largely ineffective (Beardsley 1993). To date, *A. sinicus* remains an abundant pest throughout the Hawaiian Islands (e.g., Beardsley 1993; Furutani et al. 1995; Siemann and Rogers 2003) and is considered a threat to the west coast of the United States (Ritcher 1948). The species is included on the USDA-APHIS Regulated Plant Pest List (USDA-APHIS 2000) and has been detected on floors of empty sea cargo containers in storage in Australia (Stanaway et al. 2001). Fortunately, biosecurity protocols have become more efficient in recent years, and *A. sinicus* has not become established in the mainland United States. Nevertheless, *A. sinicus* is considered a species with moderate potential for invasive risk in the United States based on factors that include: 1) areas with potentially suitable climate exist; 2) entry potential into a new country based on historical data and interceptions; 3) potential economic impact if the species were to become established; and 4) specific hosts that the species can damage (Gregory et al. 2005). Because it has become established in numerous regions, it is clearly a species of concern for biosecurity.

Methods of control are needed for the Chinese rose beetle, both to minimize damage caused to agricultural and ornamental crops in Hawaii as well as to reduce the risk of its introduction to the U.S. mainland. The lack of reliable, non-destructive methods for sex determination impedes field and laboratory research. Determination of males and females in most species of *Adoretus* is problematic. Unlike many genera of leaf chafers (Rutelinae:

Scarabaeidae), there is amazingly little external sexual dimorphism. Within the Rutelinae, standard sexual determination can be made based on a variety of characters, including differences in the form of the protarsal claws, protarsi, metatibial apex, metatibia, metacoxa, metafemur, metatrochanter, and abdominal sternites. However, as stated by Baraud (1985), most *Adoretus* species lack noticeable sexual dimorphism. Currently, determination of sexes in adult *A. sinicus* requires killing and dissection of specimens (e.g., Hession et al. 1994). Our research sought more readily accessible, external morphological characters that would not necessitate destruction of live specimens. In support of further research to improve control of the Chinese rose beetle, an assessment of characteristics that can be used for non-destructive differentiation of the sexes is provided. Additionally, because background literature on Chinese rose beetle is scattered among a number of publications, many of which are not readily available, a review of the basic biology of this species and past efforts of control is also included. The assessment provided here of characteristics useful for differentiation of sexes in the Chinese rose beetle may also be helpful in sex determination of other species of *Adoretus*, including known pests that are also of biosecurity concern because of the potential for invasion through the movement of potted plants across geographic regions. In recognition of the potential agricultural and biosecurity threat of *Adoretus* species, we also review closely related and economically important *Adoretus* species.

Biology of the Chinese Rose Beetle

The Chinese rose beetle is a generalist foliage feeder and is primarily active at night (Ebesu 2003). Damage to ornamental plants and crops

is caused by interveinal feeding that creates a lace-like appearance and greatly reduces photosynthetic capabilities of the plant (Furutani et al. 1995). The adult Chinese rose beetle has been reported to feed on over 250 species and approximately 56 families of plants (Habeck 1964) or on over 500 plant species (Hession et al. 1994). Host plants include many economically important plants such as broccoli (*Brassica oleracea* var. *italica* Plenck), cabbage (*Brassica oleracea* var. *capitata* L.), cacao (*Theobroma cacao* L.), Chinese broccoli (*Brassica oleracea* L. var. *alboglabra*), Chinese cabbage (*Brassica rapa* L. subsp. *chinensis* [L.] Hanelt), chiso (*Perilla frutescens* [L.] Britton), corn (*Zea mays* L.), cotton (*Gossypium barbadense* L.), cucumber (*Cucumis sativus* L.), eggplant (*Solanum melongena* L.), ginger (*Zingiber officinale* Roscoe), grape (*Vitis labrusca* Bailey), green beans (*Phaseolus vulgaris* L.), jack fruit (*Artocarpus heterophyllus* Lam.), okra (*Hibiscus esculentus* L.), peanuts (*Arachis hypogaea* L.), Oriental persimmon (*Diospyros kaki* Thunb.), raspberry (*Rubus niveus* Thunb.), roses (*Rosa* spp.), salak palm (*Salacca zalacca* Gaerther), soybean (*Glycine max* L.), star fruit (*Averrhoa carambola* L.), strawberry (*Fragaria chiloensis* [L.] Duch.), sweet potato (*Ipomoea batatas* [L.]), taro (*Colocasia esculenta* [L.] Schott) and tea (*Camellia sinensis* L.) (Mau and Kessing 1991; Arita et al. 1993; Zee et al. 2003).

Adults emerge at dusk and peak feeding and mating occurs about 30 minutes after sunset (Tsumi et al. 1993). As is common with many other nocturnal species of scarab beetles, adults are readily monitored using light traps. Sex ratio in the field is approximately 1:1, although about 27.9% of adults collected at light traps are males (Habeck 1964). During the day, adults are found under leaves, loose bark, or are

shallowly buried in the soil (Williams 1931). Adults preferentially feed on leaves and plant species that are relatively high in non-structural carbohydrates (Arita et al. 1993) and prefer leaves with feeding or other types of damage (Pemberton 1959). Plants produce increased levels of ethylene gas both after ethephon treatment and after leaves are damaged by insect feeding. It appears that the high levels of ethylene gas emission “are involved in the formation of a plant volatile(s) that serves as an attractant and feeding stimulus for the Chinese rose beetle” (Arita et al. 1988). Such an attractant, however, has not yet been identified.

Developmental rate of *A. sinicus* from egg to adult varies greatly depending on temperature and quality of larval substrate. Development from egg to adult averages about 15 weeks in the laboratory (Habeck 1964) or 6-7 weeks in the field (Mau and Kessing 1991). Oviposition begins seven days after pairing of mature males and females (Habeck 1964). Females oviposit in the soil about 4 cm below the surface. Based on 6 field-collected females, females lay 22-89 eggs each (average = 54). Eggs are oval (~1.5 x 1.0 mm) and white (Habeck 1963). The egg stage may last approximately 12-16 days at 24.0°C or 7-13 days at 28.6°C (Habeck 1964). The larval stage includes three instars. Duration of the instars averages 19.6-22.8, 14.5-16.8, and 34.3-44.4 days, respectively (Habeck 1964). Larvae are c-shaped, white grubs that live in rich soil, leaf litter, decaying vegetation, or compost, where they feed on dead plant tissues (Mau and Kessing 1991). They apparently do not attack living vegetable tissues (Mau and Kessing 1991; Williams 1931). The pupa, which is approximately 6.0-12.0 mm, is covered with dense, short setae. The pupal stage lasts 11-17 days, averaging about 14 days (Habeck 1964). The adult

beetle (Figures 1, 2) is oblong oval, reddish-brown and covered with creamy, dense, scale-like setae, giving the beetle an overall grayish appearance. Body length varies from ~10-12 mm in length. Species identification for *A. sinicus* is based on form of the male genitalia (Figure 10). Field-collected adults have been found to live for as long as eight weeks in the laboratory (Habeck 1964).

The characteristic interveinal defoliation pattern of the Chinese rose beetle is caused by the beetle’s unusual mouthparts. The labrum is produced ventrally at the middle and forms a tooth-like process. This process completely separates the mandibles and maxillae into two independent chewing apparatus that are incapable of meeting in the middle. When feeding on a leaf surface, the beetle uses only one side of its mouth at a time, thus producing paired holes in leaves and often leaving a narrow strip of leaf intact in the middle (Arrow 1917).

Because adults cause heavy damage to crops and ornamental plants, research has been devoted to control of the species. Despite numerous attempts using many methods, control of the Chinese rose beetle has proved to be problematical. Tests to develop effective control techniques have included the use of parasitoids, pathogens, pesticides, food lures, and aggregation pheromones.

Parasitic Hymenoptera from the families Scoliididae (*Campsomeris marginella modesta* Smith) and Tiphidae (*Tiphia segregata* Crawford) were introduced to Hawaii from the Philippines to control the introduced scarab beetles *A. sinicus* and *Anomala orientalis* (Waterhouse) (Scarabaeidae: Rutelinae: Anomalini) (Muir 1917, 1919). Over 14,000 eggs, pupae, and adults of *C. marginella modesta* were imported to Hawaii

between 1915-1917. In the short term, there were immediate declines in the target scarabs. Prior to importation of the wasp, over 3,500 *Anomala* grubs were found in 1/20th of an acre; only four *Anomala* grubs were found in the same area in 1919 (Muir 1919). Muir (1919) hypothesized that biocontrol success would lead to “extinction” of *A. orientalis* in the region, and that *C. marginella* would maintain itself on grubs of the Chinese rose beetle. In the long term, however, control by these parasitoids has been only slightly effective (Pemberton 1964). In another attempt, importation of 24,000 *Adoretus* grubs from the Philippines that were parasitized with *Tiphia lucida* Crawford also failed (Pemberton 1964).

Treatments using the entomopathogenic fungi *Metarhizium* and *Beauveria* have been conducted on the Chinese rose beetle. Success of using the green muscardine fungus, *Metarhizium anisopliae* (Metschnikov), against *A. sinicus* are conflicting. Koebele (1897) and Williams (1931) reported some success against the Chinese rose beetle, particularly during the wet season. Three strains of *M. anisopliae* (M346, M2151, and M2162) were tested on larvae of *A. sinicus* with success (Tsutsumi et al. 1993), but effectiveness needs to be replicated due to the high mortality in both controls and experimental treatments. Consistent infection in scarabs may be limited to *Beauveria brongniartii* (Saccardo) Petch or large-spored varieties of *M. anisopliae* var. *majus* (Metch.) Sorokin, and research efforts should be directed towards these fungal strains and species (Jackson and Klein 2006).

Entomopathogenic nematodes in the families Steinernematidae and Heterorhabditidae could be effective control agents for scarab beetle larvae or adults and could minimize the use of

pesticides. However, tests on adult *A. sinicus* using the nematodes *Steinernema carpocapsae* (Weiser) and *Heterorhabditis* sp. MB7 (Maui isolate) were ineffective (Hara et al. 1989), and tests on larvae were also ineffective (Tsutsumi et al. 1993).

Broad spectrum organophosphate pesticides, like carbaryl, have been used for Chinese rose beetle control, as they have been used for control of Japanese beetles and other scarab beetles. Because of the potential for significant non-target effects of organophosphate insecticide use, development of effective reduced risk insecticides is needed. An azadirachtin-based pesticide has been tested and found to be promising (Arita Tsutsumi et al. 1995), and imidicloprid-based systemic pesticides have also been found to help in control of Chinese rose beetle. At present, though, pesticide registrations are limited for Chinese rose beetle control in Hawaii, especially considering the wide range of crops that can be attacked by *A. sinicus*.

Food-type lures, as have been developed for the Japanese beetle (*Popillia japonica* Newman) (Scarabaeidae: Rutelinae: Anomalini) (e.g., Ladd and McGovern 1980), could be developed for *Adoretus* species. Alternatively, it may be possible to identify attractive herbivory-induced plant volatiles such as have been found for other scarab beetle species (Loughrin et al. 1995, Reinecke et al. 2002). This possibility is encouraged by the observation that “host plants that were previously fed upon by the beetle were more desirable as a food source than untouched plants of the same species” (Pemberton 1959, Arita et al. 1988). Patterns of feeding preference could be used for management and control of *A. sinicus*. For example, *A. sinicus* prefers recently matured leaves in the uppermost part of the plant, whereas *A.*

versutus prefers younger leaves in the lower part of the plant (Tsutsumi et al. 1993).

Pheromones can be used to disrupt behavior, reduce populations, and monitor for outbreaks of scarab pests (Jackson and Klein 2006). Preliminary observations indicated that pheromones may be involved in the attraction of *A. sinicus* and *A. versutus* to mating sites (Tsutsumi et al. 1993), with the probable existence of an *A. sinicus* pheromone sex attractant (Hession et al. 1994). A synthetic sex attractant, produced by females and primarily attractive to males (“Japonilure”), was successfully developed for the Japanese beetle (Tumlinson et al. 1977 1979, Doolittle et al. 1980) and joint presentation of Japonilure and food-type lure provided a lure “of outstanding attractancy” (Ladd et al. 1981). A sex attractant has also been discovered for *Anomala orientalis* (Zhang et al. 1994) and shows promise for population management by mating disruption (e.g., Wenninger and Averill 2006). Promising attractants have been successfully developed for at least one other *Adoretus* species. The synthetic unsaturated terpene alcohols nerolidol (3,7,11-tri-methyl-1,6,10-dodecatrien-3-ol) and geraniol ([E]3,7,-dimethyl-2,6-octadien-1-ol) were shown to be highly attractive to the Australian *A. tessulatus* Burmeister (Donaldson 1986). Both chemicals are found widely in the essential oils of flowers and plants. These results provide encouragement that comparable food-based and sex attractant lures could also be developed for the Chinese rose beetle. However, initial tests of synthetic lures developed for Japanese beetles and other scarab beetles (including geraniol) failed to identify effective attractants for *A. sinicus* and *A. versutus* (Tsutsumi et al. 1993), and preliminary trials of nerolidol also failed to demonstrate attractiveness for *A. sinicus*

(GTM, unpublished). Further semiochemical research is clearly needed with *A. sinicus*.

Materials and Methods

Insects. Beetles were collected at night, in the vicinity of Hilo, HI, from four different host plant species (copperleaf, *Acalypha wilkesiana* Muell.-Arg. [Euphorbiaceae]; rose, *Rosa* sp. [Rosaceae]; pilau maile, *Paederia foetida* L. [Rubiaceae]; and wax apple, *Syzygium samarangense* (Blume) Merrill and Perry [Myrtaceae]) from Jan.-Sept., 2009. Collected beetles were held outdoors in an environment that included castor bean (*Ricinus communis* L.); [Euphorbiaceae] plants on which they could feed for at least two weeks before beetles were evaluated. The holding time was selected in order that there would be an opportunity for wearing of the external teeth of the protibia. The external teeth of the protibia tend to be more acute in the male (less acute in the female), but acuteness is subject to wear that rounds the apices of the teeth. Following the two week holding time, beetles were killed by freezing in a So-Low ultra low temperature freezer (So-Low Environmental Equipment, www.so-low.com) maintained at -70° C, and then external morphological characters of potential use in sex determination were evaluated.

The following measurements were made on each individual: total body length (tip of the head to the tip of the closed elytra), maximum body width (maximum width of the elytra, typically at about the middle of the elytra), length of protarsomere 1 (from the top of the condyle to the apex of the protarsomere; see Figures 3, 4), maximum width of protarsomere 1, and the combined length of protarsomeres 2 – 4 (from the base of protarsomere 2 to the apex of protarsomere 4; see Figures 3, 4). All protarsomere

measurements were made using the ventral side of the right front leg. For each specimen, external teeth of the protibia (Figures 3, 4) were assessed as being acute or rounded (Figures 3, 4) and whether the apex of the terminal sternite was quadrate or rounded posteriorly (Figures 5, 6). Each specimen was then dissected for definitive sex identification based on the presence or absence of the male genitalia. Presence or absence of eggs was also noted and, if present, maximum length and width were recorded for two randomly selected eggs. One hundred specimens of each sex were evaluated for the above morphological characters. Observations on the form of the terminal sternite were made with a Leica Wild M3Z dissecting microscope (Leica Microsystems, Inc., www.leica-microsystems.com) that, in conjunction with a measurement scale etched in a glass slide, was also used to measure body length and body width. Tarsomeres were measured with a Leica Wild M8 microscope with a 1.6X objective adapter and a calibrated ocular micrometer. Digital images of specimens and structures were captured using the Auto-Montage imaging system by Synchroscopy (Synoptics Inc., www.synoptics.co.uk). Images were edited in Adobe Photoshop CS2 (Adobe Systems Inc., www.adobe.com) (background removed, contrast manipulated).

Statistical Analysis.

Significance of differences by sex in body length and width, protarsomere 1 length, protarsomere width, protarsomere length : width ratio, and protarsomeres 2 – 4: protarsomere 1 ratio were tested by ANOVA (JMP 2007).

Results

On average, females were significantly larger (based on body length and width) than males

(mean \pm SE: *length* ♀: 11.65 ± 0.067 mm; ♂: 10.71 ± 0.047 mm; $F = 130.91$, $df = 1, 198$, $p < 0.0001$; *width* ♀: 5.39 ± 0.014 mm; ♂: 4.97 ± 0.024 mm; $F = 228.17$, $df = 1, 198$, $p < 0.0001$). However, obvious overlap between the sexes make these measurements unreliable for sex determination (Figure 7). Protarsomere 1 was significantly longer in females (♀: 0.54 ± 0.00070 mm; ♂: 0.37 ± 0.00071 mm; $F = 29166.35$, $df = 1, 198$, $p < 0.0001$; Figures 3, 4). However, without a comparative characteristic, this feature is not useful in determining sex. Width of protarsomere 1 (♀: 0.199 ± 0.00027 mm; ♂: 0.195 ± 0.00050 mm) and the combined length of protarsomere 2-4 (♀: 0.61 ± 0.00 mm; ♂: 0.61 ± 0.00 mm) varied little between sexes. However, both the ratio of protarsomere 1 length: width (♀: 2.69 ± 0.0045 ; ♂: 1.88 ± 0.0059 ; $F = 11971.93$, $df = 1, 198$, $p < 0.0001$) and the ratio of the combined length of protarsomeres 2-4 to the length of protarsomere 1 (♀: 1.14 ± 0.0015 ; ♂: 1.67 ± 0.0033 ; $F = 21027.18$, $df = 1, 198$, $p < 0.0001$) differed significantly by sex and there was complete separation (no overlap) for males and females (Figure 8). The form of the apex of the terminal sternite provided clear separation of the sexes. The terminal sternite is always rounded posteriorly in females (Figure 6) and always quadrate in males (Figure 5) based on our observations of 100 males and 100 females. Although the apices of the male protibial teeth can become more rounded through wear over time, the more acute (males) versus the less acute (females) distinction was reliable in over 90% of the cases for all three protibial teeth, with the apical tooth in males being the most consistently acute of the three teeth (Figures 3, 4, 9).

Discussion

Three reliable characteristics that allow non-destructive determination of males and females of *A. sinicus* were found: 1) the form of the terminal sternite (Figures 5, 6); 2) the length to width ratio of protarsomere 1 (Figures 3, 4, 8), and; 3) the ratio of the combined length of protarsomeres 2-4: length of protarsomere 1 (Figures 3, 4, 8). These characteristics are most easily discerned in the laboratory with chilled specimens and with the aid of a microscope. It is also possible to discern sex differences in the field with a hand lens. For field application, it is easier to see the leg characters than the terminal sternite character.

In *A. sinicus* males, the apex of the terminal sternite is quadrate (Figure 5), whereas the apex of the female terminal sternite is rounded posteriorly (Figure 6). Cream-colored setae at the apex of the sternites may obscure this region slightly, but the characteristics are still discernable. This distinction was valid in all specimens examined. This characteristic is useful in many groups of Scarabaeidae, and it is broadly applicable within the genus *Adoretus* and other members of the tribe Adoretini.

The relative dimensions of the protarsomeres (Figures 3, 4, 8) in ventral view are also reliable for separating the sexes. This difference can be observed by comparing the combined length of protarsomeres 2 to 4 to the length of protarsomere 1, or by comparing the relative length and width of protarsomere 1. In *A. sinicus* males, the combined length of protarsomeres 2 - 4 is over 1.5 times the length of protarsomere 1 (Figures 3, 8), whereas in females, the combined length of protarsomeres 2 to 4 is less than 1.2 times the length of protarsomere 1 (Figures 4, 8). The

relative proportions of protarsomere 1 is also a reliable character for sex determination. In *A. sinicus* males, the length averages less than 2 times the width. In females, the length averages greater than 2.5 times the width. Protarsomere characteristics must all be viewed ventrally; examination in dorsal view may lead to incorrect assessment of the length of tarsomeres. Protarsomere characteristics may be useful in sex determination of some other species of *Adoretus*, but are not broadly applicable within the entire genus. Characteristics of the protarsomeres have some applicability to some other scarabaeids (e.g., Japanese beetle, *Popillia japonica*, USDA-APHIS 2004) but must be assessed on a species by species basis.

Less reliable methods for separating the sexes involved relative characters that required comparison between known males and females as well as characteristics that were subject to abrasion and wearing. One of the characteristics was the difference in the form of the protibial teeth (acute in the males versus rounded in the females). Even restricting our observations to adults "aged" at least two weeks, the protibial teeth of males were more acute than those of females in over 90% of specimens examined. However, *A. sinicus* adults use the protibia for digging in the soil, and the teeth are subject to wear. Thus, this is an unreliable characteristic for sex determination and does not provide 100% accuracy.

For the sexing that we have done in the laboratory, we typically look first at the relative dimensions of protarsomere 1, and then confirm sexing based on this character with subsequent observations of the terminal sternite and the protibial teeth. As one develops familiarity with the differences, one can recognize the differences in the relative

dimensions of protarsomere 1 without having to make any actual measurements. It's helpful to have more than one characteristic to use to reduce chance of incorrect decision-making based on assessment of only one character.

Other characters useful for determination of the sexes in other Rutelinae are, for example, the form of the abdomen (males with sternites concave or planar; females with sternites weakly convex), but this is not useful in the *Adoretus* species that we examined. In addition, characters that are useful in other *Adoretus* species are not reliable for use in *A. sinicus*. Those characters include: (1) the presence (female) or absence (male) of a longitudinal furrow on the disc of the pygidium; (2) the sternites appearing slightly convex (females) versus slightly concave (males); and (3) the 5th protarsomere similar in width to other protarsomeres and armed with less developed internomedial teeth or lacking internomedial teeth (female) versus the 5th protarsomere being generally wider and better developed than other protarsomeres and armed with well developed internomedial teeth (males) (e.g., Figures 12, 13).

This latter characteristic is apparent in *A. tenuimaculatus*. *Adoretus sinicus* was originally referred to as *A. tenuimaculatus* in Hawaii. Some literature and databases still confuse these species. The comparisons between these species are useful to illustrate differences (and similarities) between *Adoretus* species. Comparisons are more readily made between these two species because *A. tenuimaculatus* is one of the most commonly encountered *Adoretus* in collections, thus it is a good species for comparison due to accessibility of specimens. In males of *A. tenuimaculatus*, the fifth protarsomere is slightly thickened and armed with an internomedial tooth (Figure 13),

whereas in females the fifth protarsomere is gracile and only slightly developed internomedially. This character was not useful, however, in separating males and females of *A. sinicus*. Other characters that may be useful in sex determination of other *Adoretus* species include the form of the pygidium (short and oblique in the female; longer and more convex in the male), size of the eyes (larger in the male than in the female), the length of the antennal club (longer in the male than in the female), and form of the pro- and mesotarsal claws (unequally split in the male; equally split in the female). These additional characteristics should not be applied generally to all species of *Adoretus*. However, they may provide some utility for research on other species.

The genus *Adoretus* includes approximately 460 species (Krajcik 2007), and its taxonomy, biology, and evolutionary history are poorly known. *Adoretus sinicus* is not the only *Adoretus* species of biosecurity concern. The genus *Adoretus* includes several pests and invasive species in addition to the Chinese rose beetle (Table 1): *A. bicolor* Brenske, *A. caliginosus* Burmeister, *A. compressus* (Weber), *A. hirsutus* Ohaus, *A. ranunculus* Burmeister, *A. tenuimaculatus* (Figure 11), and *A. versutus* Harold. Species in the genus are distributed in the Palearctic, Afrotropical, Indomalaysian, Australasian, and Oceanic biogeographic regions. Based on limited biological information, adults are herbivore generalists and are known to feed on a wide variety of plants. Larvae are associated with roots and, depending on the species, feed on living or non-living plant tissues. Eggs and larvae may be easily transported with cultivated plants in soil or roots (Ohaus 1935) which, combined with the generally broad host ranges, are the basis for the biosecurity concern for this group in relation to movement

of potted plants across geographic regions. This biosecurity concern makes improved taxonomic knowledge of the group essential. Adult species in the genus are externally similar (about 10.0 mm in length, brownish with cream-colored scales) making identification of Adoretini problematic. Other than scattered and older regional works (e.g. Péringuey 1902; Arrow 1917; Baraud 1985), there are few resources for identification of species. Form of the male genitalia is probably the best method of identification (e.g., *A. sinicus* versus *A. tenuimaculatus* [Figures 10, 11]), and this necessitates dissection of the male genitalia. Molecular tools, however, are being developed to aid in the identification of adults and larvae. DNA in larval-adult species associations within scarab beetle communities from Nepal have been examined (Ahrens et al. 2007). Based on about 1600 base pairs of mitochondrial COX1 and RRNL and 700 base pairs of nuclear 28S rRNA, larval specimens could be associated with 19 identified, known adult species between 86.1% and 92.7% of the time (Ahrens et al. 2007). Nine morphotypes in the sample were members of the genus *Adoretus*, but only two morphotypes (22%) could be

identified to species. In comparison, all four morphotypes within the genus *Maladera* (Coleoptera: Scarabaeidae: Melolonthinae; another scarab genus that includes pests) were identified to species. Clearly, additional systematics research is needed within the genus *Adoretus*, a group that includes many economically important species.

The reliable, non-destructive means of *A. sinicus* sex determination reported here will be instrumental in research aimed at developing improved integrated pest management systems for *A. sinicus* as well as for other *Adoretus* species. Non-destructive means of sex determination of live specimens will facilitate progress in research that seeks to develop sex-dependent detection, monitoring and control methods that make use of pheromones, mating, or reproductive parameters. Such tools are of critical importance for managing existing pest populations as well as for countering new invasions of *Adoretus* species that are likely to occur given the magnitude of transport of agricultural goods across geographic regions.

Table 1. *Adoretus* species of biosecurity concern

Scientific Name	Common Names	Host Plants	Distribution	References
<i>Adoretus bicolor</i> Brenske	None	Grapevine foliage and fruit (<i>Vitis</i> spp.), groundnut (<i>Arachis hypogaea</i> L.), rose (<i>Rosa</i> spp.)	Asia: India	Ahmed et al. 1978; Kapadia et al. 2006; Kumar et al. 2009
<i>Adoretus caliginosus</i> Burm.	Rose beetle	Cotton (<i>Gossypium hirsutum</i> L.)	Asia: Pakistan	Mahar and Bukhari 1977
<i>Adoretus compressus</i> (Weber)	None	Lychee (<i>Litchi chinensis</i> Sonn.)	AFRICA: Cape Province. ASIA: India, Sri Lanka, Malaysia, Mauritius, Thailand. AUSTRALASIA: Borneo, Java, Papua New Guinea, Sumatra	Commonwealth of Australia 2003; Machatschke 1972-1974
<i>Adoretus hirsutus</i> Ohaus	White root grub	Lychee (<i>Litchi chinensis</i> Sonn.)	ASIA: China, Taiwan	Commonwealth of Australia 2003; Machatschke 1972-1974
<i>Adoretus ranuncululus</i> Burmeister	None	Cocoa (<i>Theobroma cacao</i> L.)	ASIA: Philippines	Caballero et al. 1987
<i>Adoretus sinicus</i> Burmeister	Chinese rose beetle, Oriental rose beetle	Over 250 species in 56 plant families including major crops, turf grass, and ornamentals	ASIA: China, Indonesia, Java, Japan, Kampuchea, Korea, Malaysia, Taiwan, Thailand, Timor, Vietnam. PACIFIC ISLANDS: Hawaiian Islands, Mariana Islands, Caroline Islands	Ohaus 1935; Habeck 1964; Machatschke 1965, 1972-1974; Fang et al. 1985; Commonwealth of Australia 2003; Smith 2004
<i>Adoretus tenuimaculatus</i> Waterhouse	Chestnut brown chafer, Brown chafer	186 species in 42 plant families	ASIA: China, Japan, Taiwan	Commonwealth of Australia 2003; DongWoon et al. 1997; Machatschke 1972-1974
<i>Adoretus versutus</i> Harold	Rose beetle, Indian rose beetle	Cacao (<i>Theobroma cacao</i> L.), coffee (<i>Coffea arabica</i> L.), rose (<i>Rosa</i> spp.), vegetables, ornamentals	ASIA: Chagos Archipelago, India, Indonesia, Pakistan, Sri Lanka. AFRICA: Madagascar, Mauritius, Réunion, St. Helena, Seychelles. AUSTRALASIA: and PACIFIC ISLANDS: Cook Islands, Fiji, Java, Kiribati, Mariana Islands, Niue, Samoa, Tonga, Tuvalu, Wallis Islands, AUSTRALIA	Ohaus 1935; Machatschke 1965, 1972-1974; Watt 1986; Tsutsumi et al. 1993; Beaudoin et al. 1994; Commonwealth of Australia 2003; Aberlenc et al. 2004; Smith 2004

Acknowledgements

We thank Charmaine D. Sylva and Janice T. Nagata (USDA-ARS-PBARC) for night-time field collections of Chinese rose beetles and Janice T. Nagata and M. Roberta St. Ambrogio for permitting night-time beetle collection on their properties. We also thank Charmaine D. Sylva for patience and perseverance in making observations and measurements of the 200 specimens examined. Additionally, we thank Brett C. Ratcliffe, Michael Reding, Lorna Arita-Tsutsumi and an anonymous reviewer for constructive comments on earlier drafts of this manuscript. This article reports the results of research only. Mention of a proprietary product does not constitute an endorsement or a recommendation by the USDA for its use. USDA is an equal opportunity provider and employer.

References

- Ahmed MA, Kumar ST, Dharmaraju E. 1978. Cockchafer beetle, *Adoretus bicolor* Brenske damaging grape vine. *Indian Journal of Entomology* 39(4): 389-390.
- Ahrens D, Monaghan MT, Vogler AP. 2007. DNA-based taxonomy for associating adults and larvae in multi-species assemblages of chafers (Coleoptera: Scarabaeidae). *Molecular Phylogenetics and Evolution* 44(1): 436-449.
- Aberlenc H-P, Mille C, Cazares S. 2004. Un nouveau ravageur potentiel en Nouvelle-Calédonie *Adoretus versutus* Harold (Coleoptera, Rutelidae). *Bulletin de la Societe Entomologique de France* 109(5): 527-528.
- Arita LH, Furutani SC, Moniz JJ. 1988. Preferential feeding by the Chinese rose beetle (Coleoptera: Scarabaeidae) on ethephon-treated plants. *Journal of Economic Entomology* 81(5): 1373-1376.
- Arita LH, Furutani SC, Fukuda MT, Nakayama TR. 1993. Feeding response of the Chinese rose beetle (Coleoptera: Scarabaeidae) to non-structural carbohydrate in plants. *Journal of Economic Entomology* 86: 1416-1419.
- Arita Tsutsumi LH, Furutani SC, Yoshimura ER, Sakai DT. 1995. Feeding responses of the Chinese rose beetle, *Adoretus sinicus* Burmeister, to azadarachtin treated host plants. *Journal of Hawaiian and Pacific Agriculture* 6: 49-54.
- Arrow GJ. 1917. *The Fauna of British India including Ceylon and Burma. Coleoptera Lamellicornia Part II. (Rutelinae, Desmonychinae, and Euchirinae)*. Taylor and Francis.
- Asquith A. 1995. Alien species and the extinction crisis of Hawaii's invertebrates. *Endangered Species UPDATE* 12: 1-8. Available online, <http://www.hear.org/articles/asquith1995>
- Baraud J. 1985. *Coléoptères Scarabaeoidea Faune du Nord de l'Afrique du Maroc au Sinaï*. Editions Lechevalier.
- Beardsley JW. 1993. Exotic terrestrial arthropods in the Hawaiian Islands: origins and impacts. *Micronesica*, Suppl. 4: 11-15.
- Beaudoin L, Robert P, Lal SN, Decazy B. 1994. Control of a pest, *Adoretus versutus*, using an entomopoxvirus, on the islands of Fiji. *Plantations, Recherche, Développement* 1(2): 50-56.

CAB International. 1981. Distribution maps of plant pests, 1981. Map 424. *Adoretus sinicus*. CAB International.

Caballero E, Easaw PT, Nagaraja H. 1987. A new record of a pyrgotid parasite of *Adoretus ranunculus* on cacao in the Philippines. *Planter* 63(730): 16-17.

Commonwealth of Australia. 2003. Longan and lychee fruit from the People's Republic of China and Thailand Draft Import Risk Analysis Report Part B. Canberra, Australia.

Donaldson JMI, McGovern TP, Ladd, Jr. TL. 1986. Trapping techniques and attractants for Cetoniinae and Rutelinae (Coleoptera: Scarabaeidae). *Journal of Economic Entomology*. 79: 374-377.

DongWoon L, Choo H, JaeMin C, SangMyeong L, Taewoo L, YeongDo P. 1997. Host plants and preference of brown chafer, *Adoretus tenuimaculatus* Waterhouse (Coleoptera: Scarabaeidae). *Korean Journal of Applied Entomology* 36(2): 156-165.

Doolittle RE, Tumlinson JH, Proveaux AT, Heath RR. 1980. Synthesis of the sex pheromone of the Japanese beetle. *Journal of Chemical Ecology* 6: 473-485.

Ebesu R. 2003. *Integrated Pest Management for Home Gardens: Insect Identification and Control*. Cooperative Extension Service, College of Tropical Agriculture and Human Resources, University of Hawaii in Manoa.

Fang HL, Lian YY, Tong PY. 1985. A preliminary study on *Adoretus sinicus*. *Forest Science and Technology (Linye Keji Tongxun)* 2: 26-28.

Furutani SC, Arita-Tsutsumi LH, Hession RO, Yoshimura ER. 1995. Field assessment of Chinese Rose beetle, *Adoretus sinicus* Burmeister, feeding damage. *Journal of Hawaiian and Pacific Agriculture* 6: 55-59.

Gregory P, Hamilton G, Robson M. 2005. The Role of Cooperative Extension in Homeland Security. *American Entomologist* 51: 134-137.

Habeck DH. 1963. Description of immature stages of the Chinese rose beetle, *Adoretus sinicus* Burmeister (Coleoptera: Scarabaeidae). *Proceedings of the Hawaiian Entomological Society* 18(2): 251-258.

Habeck DH. 1964. Notes on the biology of the Chinese rose beetle, *Adoretus sinicus* Burmeister, in Hawaii. *Proceedings of the Hawaiian Entomological Society* 18(3): 399-403.

Hara AH, Mello CL, Arita LH, Tsutsumi L, Kaya KY. 1989. Laboratory susceptibility of some tropical pest species and a non-target organism to the entomopathogenic nematode, *Steinernema carpocapsae*. *Journal of Hawaiian and Pacific Agriculture* 2: 6-9.

Hawaii Department of Land and Natural Resources. 2008. *Summary of the Report of the 24th Legislature 2008 Session*, Division of Forestry and Wildlife, the Hawaii Invasive Species Program.

Hession RO, Arita LH, Furutani SC, Fukada M. 1994. Field observations on the mating behavior of the Chinese rose beetle, *Adoretus sinicus* Burmeister (Coleoptera: Scarabaeidae), in Hawaii. *Journal of Hawaiian and Pacific Agriculture* 5: 37-42.

Jackson TA, Klein MG. 2006. Scarabs as pests: a continuing problem. In: Jameson ML,

Ratcliffe BC, editors. Scarabaeoidea in the 21st Century: A Festschrift Honoring Henry F. Howden. *Coleopterists Society Monograph* 5: 102-119.

JMP. 2007. *JMP Version 7.0.2*. SAS Institute Inc..

Kapadia MN, Butani PG, Beria NN. 2006. White grub species attacking groundnut in the Saurashtra Region in Gujarat, India. *International Arachis Newsletter* 26: 28-29.

Koebele A. 1897. *Hawaiian Planter's Monthly* 16: 83-85.

Koebele A. 1898. Report of the entomologist. *Report of the Minister of the Interior to the President of the Republic for the biennium ending Dec. 31, 1897*: 105-107.

Krajcik M. 2007. *Checklist of the Scarabaeoidea of the World. 2. Rutelinae (Coleoptera: Scarabaeidae: Rutelinae)*. *Animma.X*, Supplement 4: 1-141.

Kumar S, Sankar M, Sethuraman V, Musthak A. 2009. Population dynamics of white grubs (Coleoptera: Scarabaeidae) in the rose environment of Northern Bangalore, India. *Indian Journal of Science and Technology* 2: 46-52. Available online, <http://indjst.org/archive/vol.2.issue.1/jan09kumar.pdf>

Ladd TL, Klein MG, Tumlinson JH. 1981. Phenethyl propionate + eugenol + geraniol (3:7:3) and Japonilure: a highly effective joint lure for Japanese beetles. *Journal of Economic Entomology* 74: 665-667.

Ladd TL, McGovern TP. 1980. Japanese beetle: a superior attractant, phenethyl propionate + eugenol + geraniol, 3:7:3.

Journal of Economic Entomology 73: 689-691.

Loughrin JH, Potter DA, Hamilton-Kemp TR. 1995. Volatile compounds induced by herbivory act as aggregation kairomones for the Japanese beetle (*Popillia japonica* Newman). *Journal of Chemical Ecology* 21: 1457-1467.

Machatschke JW. 1965. Coleoptera Lamellicornia Fam. Scarabaeidae Subfam. Rutelinae Section Rutelinae Orthochilidae. *Genera Insectorum* 199C: 1-145.

Machatschke JW. 1972-1974. Scarabaeoidea: Melolonthidae, Rutelinae. *Coleopterorum Catalogus Supplementa*, Pars 66, Fascicles 1-2: 1-361 and 363-429.

Mahar MMM, Bukhari KM. 1977. Out-break of cock-chaffer *Adoretus caliginosus* Burm. on newly introduced cotton cultures and their progenies at Tando Jam, Sind. *Pakistan Cottons* 21(4): 179-184.

Mau RFL, Kessing JLM. 1991. Crop Knowledge Master: *Adoretus sinicus* (Burmeister). Available online, <http://www.extento.hawaii.edu/Kbase/Crop/Type/adoretus.htm>

Muir F. 1917. The introduction of *Scolia manila* Ashm., into the Hawaiian Islands. *Annals of the Entomological Society of America* 10(2): 202-210.

Muir F. 1919. The Progress of *Scolia manilae*, Ashm., in Hawaii. *Annals of the Entomological Society of America* 12(2): 171.

Ohaus F. 1935. Checklist of the Rutelinae (Coleoptera, Scarabaeidae) of Oceania.

Bernice P. Bishop Museum, *Occasional Papers* 11(2): 3-9.

Pemberton CE. 1959. *Report of the rhinoceros beetle technical advisory committee meeting held in Suva, Fiji*. February 16-19. South Pacific Commission, New Caledonia. p. 11.

Pemberton CE. 1964. Highlights in the history of entomology in Hawaii 1778-1963. *Pacific Insects* 6(3): 689-729.

Péringuey L. 1902. Descriptive catalogue of Coleoptera of South Africa (Lucanidae and Scarabaeidae). *Transactions of the South African Philosophical Society* 12: 563-624.

Reinecke A, Ruther J, Tolasch T, Francke W, Hilker M. 2002. Alcoholism in cockchafers: orientation of male *Melolontha melolontha* towards green leaf alcohols. *Naturwissenschaften* 89:265-269.

Riley CV, Howard LO. 1893. An injurious Hawaiian beetle. *Insect Life* 6: 43.

Ritcher PO. 1948. Descriptions of the larvae of some ruteline beetles with keys to tribes and species (Scarabaeidae). *Annals of the Entomological Society of America* 41(2): 206-212.

Siemann E, Rodgers WE. 2003. Increased competitive ability of an invasive tree may be limited by an invasive beetle. *Ecological Applications* 13: 1503-1507.

Smith HA. 2004. Management of arthropod pests of agriculture in the Commonwealth of the Northern Mariana Islands. *American Entomologist* 50: 90-105.

Stanaway MA, Zalucki MP, Gillespie PS, Rodriguez CM, Maynard GV. 2001. Pest risk assessment of insects in sea cargo containers. *Australian Journal of Entomology* 40: 180-192.

Tsutsumi LH, Furutani SC, Nagao M, Sworts V, Vargo AM. 1993. An integrated approach to *Adoretus* control in Hawaii and American Samoa. *Micronesica*, Suppl. 4: 93-98.

Tumlinson JH, Klein MG, Doolittle RE, Ladd TL, Proveaux AT. 1977. Identification of the female Japanese beetle sex pheromone: inhibition of male response by an enantiomer. *Science* 197: 789-792.

Tumlinson JH, Klein MG, Doolittle RE, Ladd TL, Proveaux AT. 1979. *Sex pheromone produced by the female Japanese beetle: specificity of male response to enantiomers*. U.S. Patent 4,179,446. 18 December, 1979.

USDA-APHIS. 2000. USDA-APHIS Regulated Plant Pest List. http://www.aphis.usda.gov/import_export/plants/plant_imports/downloads/RegulatedPestList.pdf

USDA-APHIS. 2004. *Japanese beetle program manual for airports*. Available online, http://www.aphis.usda.gov/import_export/plants/manuals/domestic/downloads/japanese_bettle.pdf

Watt JC. 1986. Pacific Scarabaeidae and Elateridae (Coleoptera) of agricultural significance. *Agriculture, Ecosystems & Environment* 15 (2-3): 175-187.

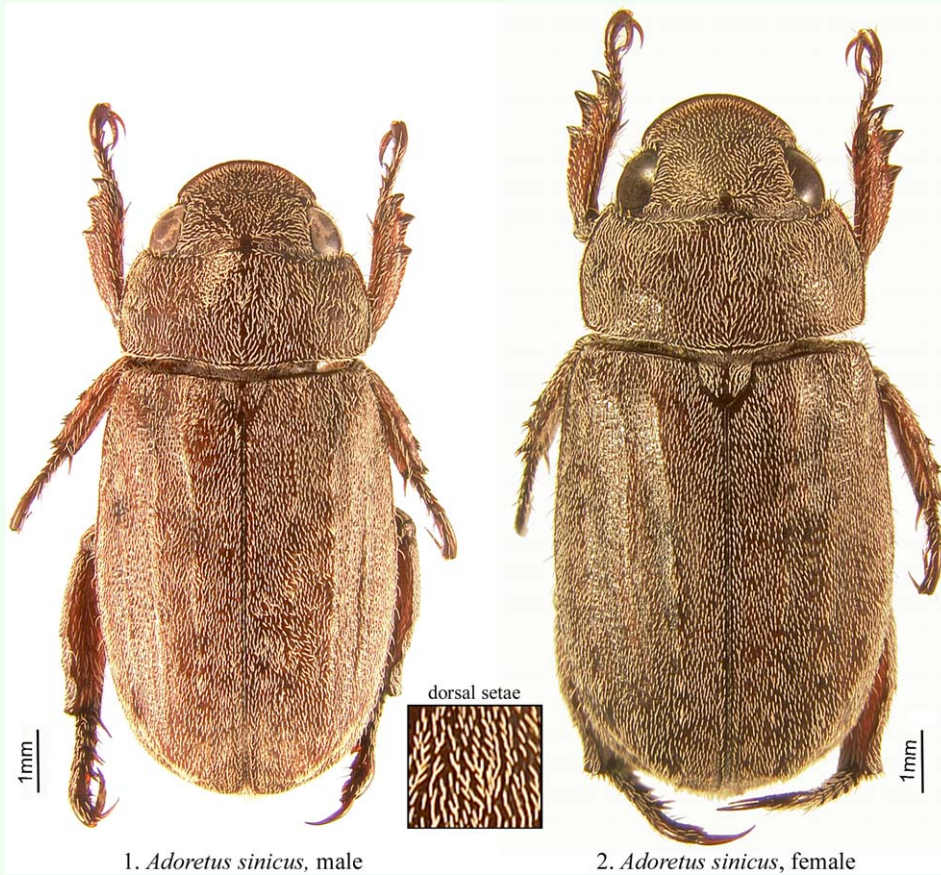
Wenninger EJ, Averill AL. 2006. Mating disruption of Oriental beetle (Coleoptera: Scarabaeidae) in cranberry using retrievable,

point-source dispensers of sex pheromone. *Environmental Entomology* 35: 458-464.

Williams FX. 1931. *Handbook of the Insects and Other Invertebrates of Hawaiian Sugarcane Fields*. Honolulu, Hawaii: Hawaiian Sugar Planters' Association. Advertiser Publisher Co.

Zee F, Sato D, Keith L, Follett P, Hamasaki RT. 2003. Small-scale tea growing and processing in Hawaii. *New Plants for Hawaii* 9: 1-14. College of Tropical Agriculture and Human Resources, University of Hawaii at Manoa. Available online, <http://www.ctahr.hawaii.edu/oc/freepubs/pdf/NPH-9.pdf>

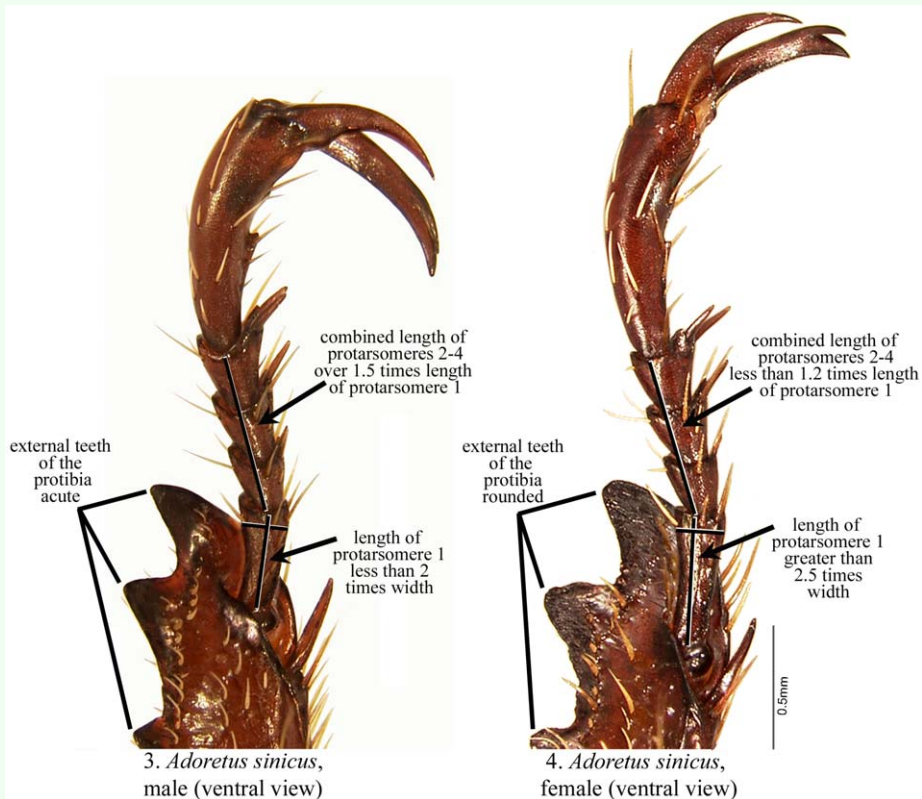
Zhang A, Facundo HT, Robbins PS, Linn CE, Jr., Hanula JL, Villani MG, Roelofs WL. 1994. Identification and synthesis of female sex pheromone of oriental beetle, *Anomala orientalis* (Coleoptera: Scarabaeidae). *Journal of Chemical Ecology* 20: 2415-2427.



1. *Adoretus sinicus*, male

2. *Adoretus sinicus*, female

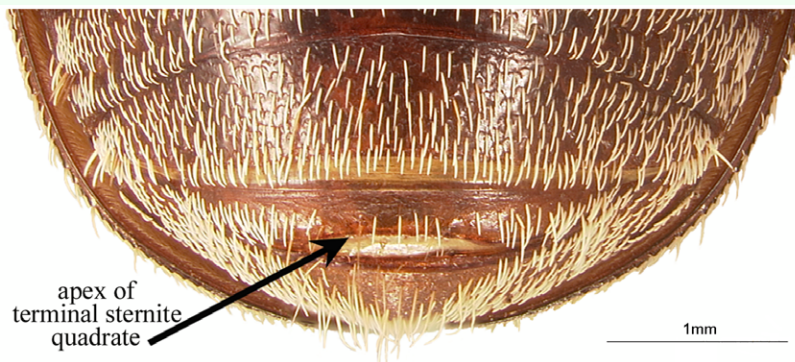
Figures 1-2. Habitus of *Adoretus sinicus*: 1) Male. 2) Female. Inset shows close-up of dorsal setae. High quality figures are available online.



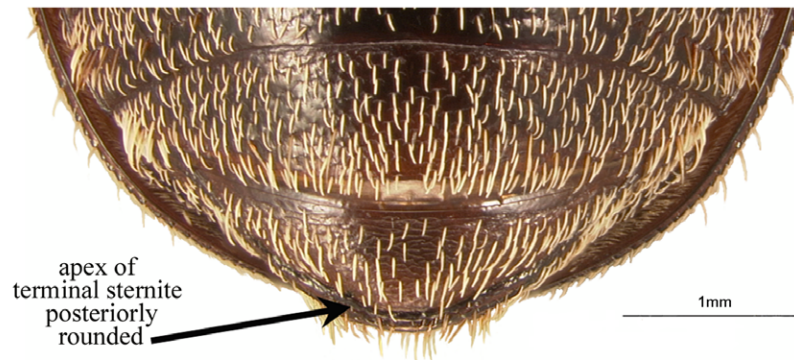
3. *Adoretus sinicus*, male (ventral view)

4. *Adoretus sinicus*, female (ventral view)

Figures 3-4. Sexual characteristics associated with the protarsus of *Adoretus sinicus*: 3) Male. 4) Female. High quality figures are available online.



5. *Adoretus sinicus*, male



6. *Adoretus sinicus*, female

Figures 5-6. Sexual characteristics associated with the terminal sternite (ventral view) of *Adoretus sinicus*: 5) Male. 6) Female. High quality figures are available online.

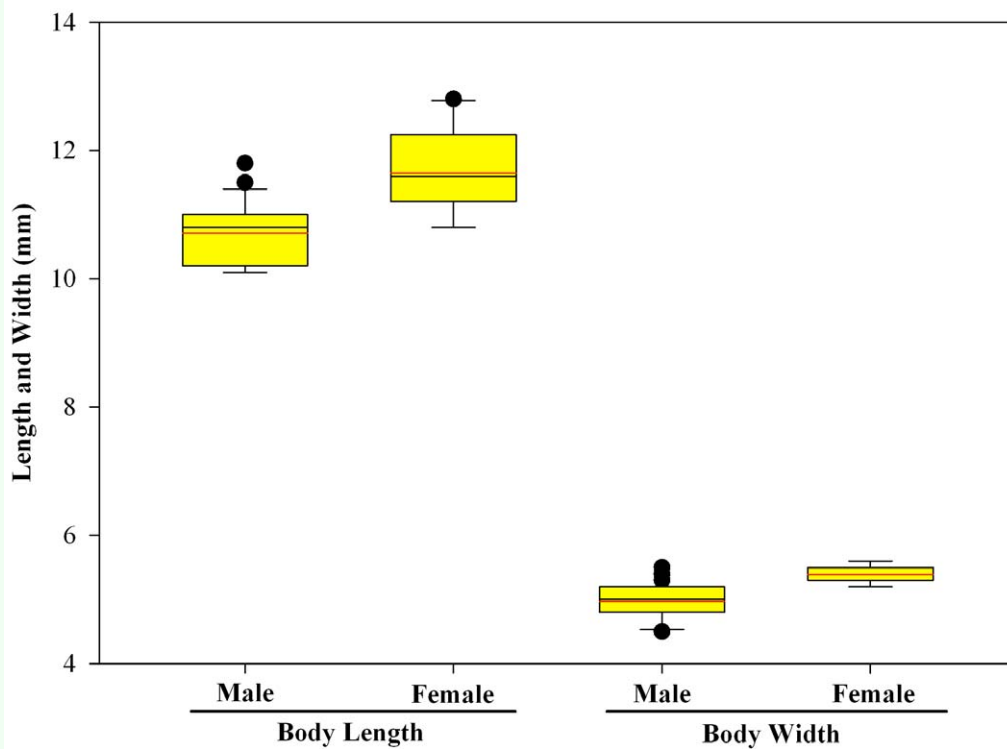


Figure 7. Comparative length and width of male and female adult Chinese rose beetles. Lower and upper boundaries of the boxes are 25th and 75th percentile values. Whiskers below and above the boxes are 10th and 90th percentile values. Black line is median value. Red line is average value. Outlier values are indicated by points outside the whiskers. High quality figures are available online.

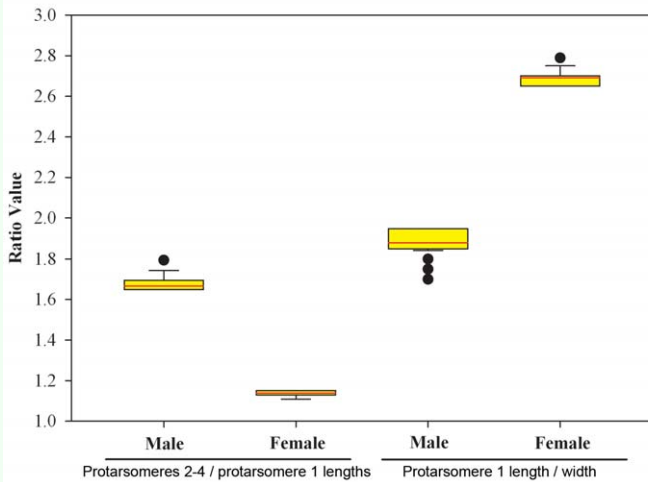


Figure 8. Comparative ratios of lengths of protarsomeres 2 - 4 combined divided by protarsomere 1 and protarsomere 1 length divided by width for male and female adult Chinese rose beetles. Lower and upper boundaries of the boxes are 25th and 75th percentile values. Whiskers below and above the boxes are 10th and 90th percentile values. Black line is median value. Red line is average value. Outlier values are indicated by points outside the whiskers. High quality figures are available online.

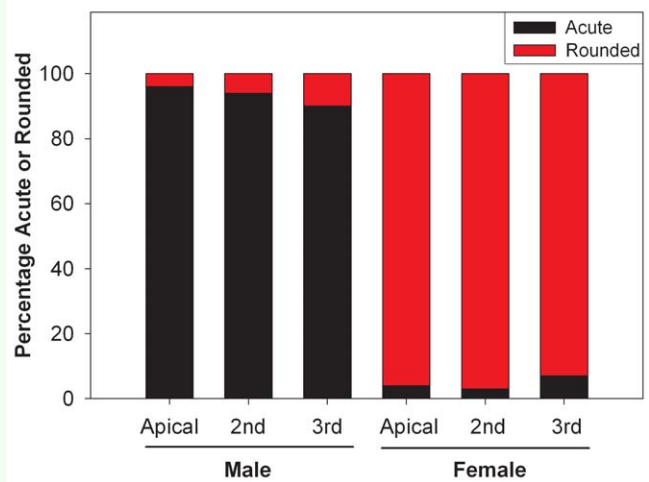


Figure 9. Percentages of observations of the form of the tips of the three external teeth of the protibia noted to be acute versus rounded for male and female adult Chinese rose beetles (based on observations of 100 males and 100 females). High quality figures are available online.



10. *Adoretus sinicus* male genitalia 11. *Adoretus tenuimaculatus* male genitalia



12. *Adoretus sinicus*, dorsal view 13. *Adoretus tenuimaculatus*, dorsal view

Figures 10-13. Characteristic differences between *A. sinicus* and *A. tenuimaculatus*. 10) Male parameres of *A. sinicus*. 11) Male parameres of *A. tenuimaculatus*. 12-13) Protarsus, dorsal view: 12) *A. sinicus*, male (with acute internomedeal tooth on fifth protarsomere). 13) *A. tenuimaculatus*, male (with rounded internomedeal tooth on fifth protarsomere). High quality figures are available online.