

# Methods

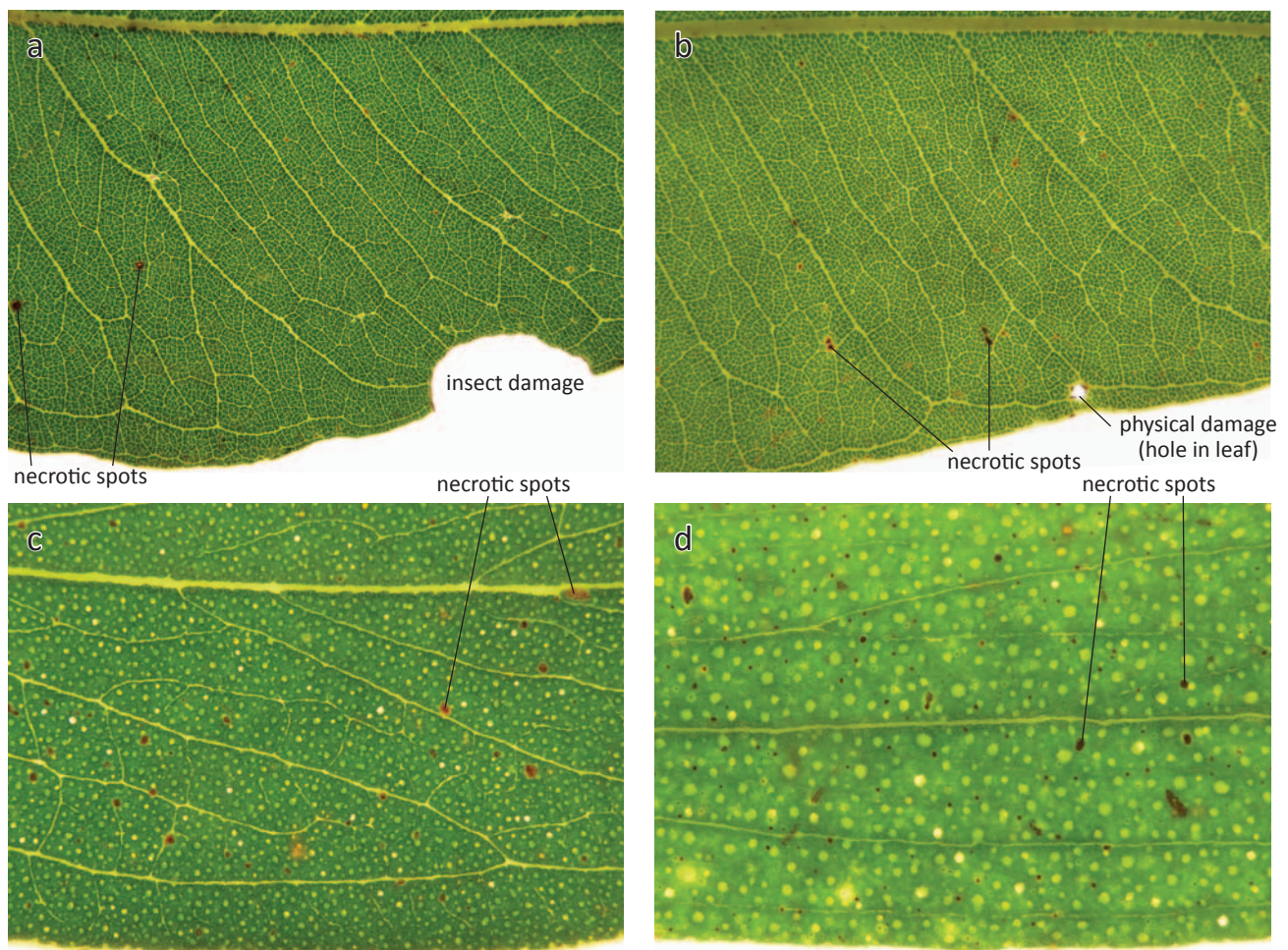
## Sampling

We have attempted to sample and illustrate representative terminal taxa from every taxonomic sub-genus, section and series. We have also attempted to sample and illustrate representative terminal taxa from the larger and more well-defined sub-series. In total, we illustrate 363 samples representing 348 terminal taxa. Many more samples and species have been observed and photographed by us and assisted us in forming our hypotheses regarding leaf venation and oil gland patterns in the eucalypts.

Most images in the Atlas have been taken from samples collected at Currency Creek Arboretum (CCA), using material of F1 progeny from wild-collected and herbarium specimen-vouchered individuals of documented origin. The original herbarium specimens from the CCA sourced material are held in

various herbaria in Australia. Some samples have been wild-collected (usually with accompanying herbarium specimens), especially for some tropical species for which healthy adult material is not currently available at CCA. Three samples representing two species (*A. hispida*; p. 19, and two samples of the extra-Australian *E. depluata*; p. 179) are from unvouchered cultivated plants.

Although we have always attempted to sample healthy, undamaged leaves for imaging, in many cases the leaves illustrated in the Atlas have visible imperfections including physical leaf damage (caused by insect eating or abrasive damage), necrotic spots (usually caused by fungal activity) and other imperfections caused by insect, fungal, bacterial or viral activity. An example of some of the leaf imperfections can be seen in Figure 4.



**Figure 4.** Imperfections in leaves of a) *C. torelliana*, b) *C. grandifolia*, c) *E. tenuiramis* and d) *E. serpentincola*.