

---

## **Ecological traits of phyllostomid bats associated with sensitivity to tropical forest fragmentation in Los Chimalapas, Mexico.**

Authors: García-García, José Luis, Santos-Moreno, Antonio, and Kraker-Castañeda, Cristian

Source: Tropical Conservation Science, 7(3) : 457-474

Published By: SAGE Publishing

URL: <https://doi.org/10.1177/194008291400700307>

---

BioOne Complete (complete.BioOne.org) is a full-text database of 200 subscribed and open-access titles in the biological, ecological, and environmental sciences published by nonprofit societies, associations, museums, institutions, and presses.

## Research Article

# Ecological traits of phyllostomid bats associated with sensitivity to tropical forest fragmentation in Los Chimalapas, Mexico.

José Luis García-García<sup>1\*</sup>, Antonio Santos-Moreno<sup>1</sup> and Cristian Kraker-Castañeda<sup>1,2</sup>

<sup>1</sup>Laboratorio de Ecología Animal, Centro Interdisciplinario de Investigación para el Desarrollo Integral Regional (CIIDIR), Unidad Oaxaca, Instituto Politécnico Nacional. Hornos No. 1003, Col. Noche Buena, Santa Cruz Xoxocotlán, C.P. 71230. Oaxaca, México. Email: asantosm90@hotmail.com.

<sup>2</sup>Departamento de Conservación de la Biodiversidad, El Colegio de la Frontera Sur (ECOSUR). Carretera Panamericana y Periférico Sur s/n, Barrio Ma. Auxiliadora, San Cristóbal de Las Casas, C.P. 29290. Chiapas, México. Email: ckraker@ecosur.edu.mx.

\*Corresponding author Email: jgarcia0800@alumno.ipn.mx

### Abstract

Certain ecological traits of bats may be associated with sensitivity to the fragmentation of their habitat, but the relative importance of this is unclear and has been poorly studied in tropical environments. We evaluated the relationship between six ecological traits of phyllostomid bats (body mass, trophic level, vertical foraging area, natural abundance in continuous forest, wing aspect ratio, and relative wing loading) and three measures of sensitivity to habitat fragmentation (species prevalence, change in abundance index, and nestedness ranking) in a fragmented forest in Los Chimalapas, Mexico. Ecological traits were obtained from 20 bat species for a period of 2 years, and their relationship with measures of sensitivity to fragmentation was analyzed using Generalized Linear Models. The analysis suggests that naturally non-abundant species (*e.g.*, Salvin's Big-eyed Bat [*Chiroderma salvini*]) have a greater risk of population decline because of habitat fragmentation. In contrast, abundant species such as Jamaican Fruit-eating Bat (*Artibeus jamaicensis*) will likely be less affected. The identification of these traits in studies of tropical bat conservation is fundamental to determine species-specific decline risk due to habitat fragmentation.

**Keywords:** tropical bats; population decline; habitat fragmentation; Los Chimalapas tropical forest; Mexico.

### Resumen

Ciertas características ecológicas de los murciélagos están asociadas a la sensibilidad a la fragmentación de su hábitat, sin embargo su importancia relativa no es clara y no han sido estudiadas en paisajes tropicales. Se evaluó la relación de seis características ecológicas (masa corporal, nivel trófico, carga relativa y proporción de aspecto del ala, área vertical de forrajeo y abundancia natural) de murciélagos filostómidos con tres medidas de la sensibilidad a la fragmentación de hábitat (permanencia de especies, índice de cambio en abundancia y rango de anidamiento) en un bosque fragmentado en Los Chimalapas, México. Las características ecológicas fueron obtenidas de 20 especies de murciélagos filostómidos en un paisaje fragmentado durante un periodo de 2 años. Se emplearon Modelos Lineales Generalizados para evaluar las relaciones entre las características ecológicas y las medidas de sensibilidad a la fragmentación. Esta relación indica que especies naturalmente poco abundantes (*e.g.*, murciélago de ojos grandes de Salvin [*Chiroderma salvini*]) son más probable que declinen debido a la fragmentación de hábitat, y de manera contraria, especies abundantes (*e.g.*, murciélago frutero de Jamaica [*Artibeus jamaicensis*]) podrían ser afectados en menor medida. La determinación de estas variables en los estudios dirigidos a la conservación de murciélagos tropicales podrían ser claves para determinar el riesgo de decline de una especie debido a la fragmentación de hábitat.

**Palabras claves:** murciélagos tropicales; decline poblacional; fragmentación de hábitat; el bosque tropical de Los Chimalapas; México.

Received: 1 May 2014; Accepted 29 July 2014; Published: 22 September 2014

**Copyright:** © José Luis García-García, Antonio Santos-Moreno and Cristian Kraker-Castañeda. This is an open access paper. We use the Creative Commons Attribution 4.0 license <http://creativecommons.org/licenses/by/4.0/us/>. The license permits any user to download, print out, extract, archive, and distribute the article, so long as appropriate credit is given to the authors and source of the work. The license ensures that the published article will be as widely available as possible and that your article can be included in any scientific archive. Open Access authors retain the copyrights of their papers. Open access is a property of individual works, not necessarily journals or publishers.

**Cite this paper as:** García-García, J. L., Santos-Moreno, A. and Kraker-Castañeda, C. 2014. Ecological traits of phyllostomid bats associated with sensitivity to tropical forest fragmentation in Los Chimalapas, Mexico. *Tropical Conservation Science* Vol.7 (3):457-474. Available online: [www.tropicalconservationscience.org](http://www.tropicalconservationscience.org)

## Introduction

Disturbances in natural ecosystems due to human activities have increased alarmingly, jeopardizing the preservation of many species [1], particularly in tropical forests where the land-use change from forest to cultivated areas and the increase of human settlements are alarming [1-3]. Habitat fragmentation affects different biological groups and is one of the main causes of increased species extinction rates in recent decades [3, 4].

Phyllostomid bats (Chiroptera: Phyllostomidae) are an ideal taxa to study the effects of habitat fragmentation [5, 6], because of their high species richness (especially in tropical zones [7-9]) and differential response to fragmentation by distinct trophic guilds [5, 7, 9]. The importance of this group in tropical environments is in their role as seed dispersers, pollinators, and arthropod predators [5, 10].

Moreover, certain species-specific ecological traits are related to sensitivity to habitat fragmentation [4, 11]. Traits such as naturally low population size, high habitat specialization, large body size, low mobility, high trophic level and low tolerance to habitat disturbance (*e.g.*, edge effect) show a high association with sensitivity to fragmentation in some vertebrate groups [4, 11-13]. The identification of these traits is critical for designing species-specific conservation strategies [12, 14, 15]. However, the relative importance of each attribute is unclear [4, 16, 17] and varies among taxa [12, 13, 18-20]. Furthermore, methodological approaches do not consider the high degree of multicollinearity or synergistic interactions among these traits [16, 17].

Theoretical and empiric evidence predict that species with natural low abundance are more susceptible to fragmentation than those with high abundance [16]. This is because populations in isolated patches tend to decrease compared to co-occurring species with high abundance [16]. The latter usually have the capacity to tolerate modified habitats and tend to maintain or even increase their abundance, so they are less vulnerable to fragmentation [12, 13]. Species with small populations are more vulnerable to extinction risk caused by demographic and environmental stochasticity and genetic deterioration [16].

Species with larger body size also are more vulnerable to fragmentation, and therefore are prone to extinction, mainly because of greater energy requirements [4, 14, 17]. Wing morphology is a predictor of diverse ecological traits such as habitat preference, foraging strategy, dispersion ability, and home range size [5, 21-23]. Bat species with relatively high wing loading and aspect ratio (long and narrow wings) have a faster and more energy-efficient flight compared to other species with low-aspect (wide and short) and high maneuverability [22]. However, bat species with high loading and aspect ratio are less efficient in long-distance flights, thus limiting their mobility within fragmented landscapes and making them more vulnerable to fragmentation [17].

Likewise, trophic level may be related to sensitivity to fragmentation. Species found on the higher levels of the trophic pyramid (carnivorous) are more susceptible to extinction than species found on the lower levels (frugivorous and nectarivorous) because of more unstable population dynamics [4, 16]. Nevertheless, bat species feeding in the forest canopy and dependent on unevenly distributed resources tend to be more mobile, and thus, less vulnerable to fragmentation than understory-foraging bats that exploit locally restricted resources [17, 23-26].

Traits related to extinction risk in bats have been previously measured, but these approximations have been on large spatial scales (*i.e.*, global and continental) [21, 27]. Those reviews show that traits such as geographic distribution areas, as well as low aspect ratio of wings and other morphological characteristics, are related to the global extinction of bats [21]. Evidence suggests that bats specializing

in foraging within or near vegetation—mostly dependent on forests—have a greater probability of extinction than those with more flexible foraging habits [21, 27]. Nevertheless, support for these predictions is weak, and its application to bat conservation is not clear, particularly on smaller scales, where sensitivity to fragmentation needs evaluation [17].

Meyer *et al.* [17] assessed the relationship between nine ecological traits and sensitivity to fragmentation in tropical bats in an insular system. Their results show that edge sensitivity is a more important trait than natural abundance, mobility, and relative wing loading. Notwithstanding the previous results, the importance of ecological traits that determine sensitivity to fragmentation in continental systems has not been explored—particularly in fragmented tropical forests, where patch-matrix contrast is not quite evident [12].

We assessed the relationship of six ecological traits of phyllostomid bats (body mass, trophic level, vertical foraging area, natural abundance in continuous forest, wing aspect ratio, and relative wing loading) with three measures of sensitivity to habitat fragmentation (species prevalence, change in abundance index, and nestedness ranking) in a fragmented forest in Los Chimalapas, Mexico.

## Methods

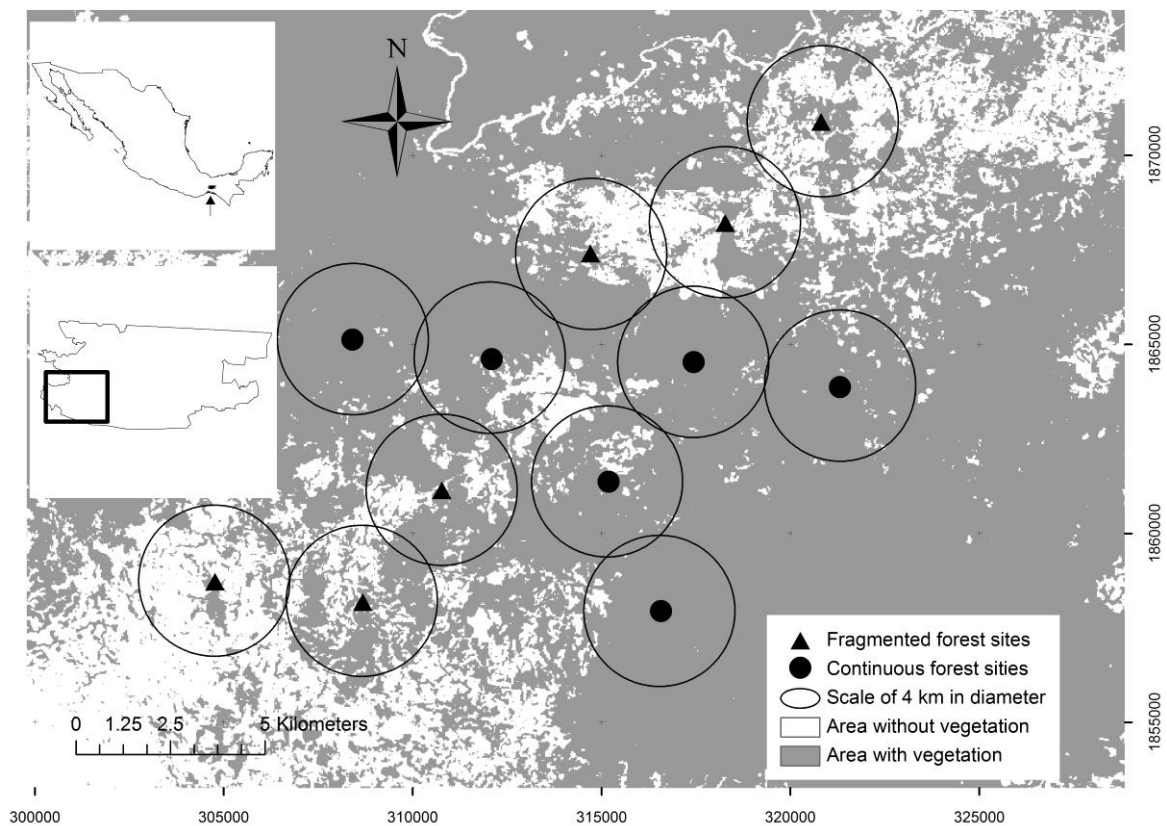
### *Study site*

The study was conducted in Los Chimalapas tropical rainforest (16° 55′-16° 47′ N and 94° 50′-94°40′ W, 160 to 600 m asl), in Oaxaca, Mexico (Fig. 1). The predominant climate is warm and humid [28], and the predominant vegetation is tropical rain forest, which covers approximately 48% of the total surface (590,993 ha) of Los Chimalapas [28]. This vegetation is characterized by trees exceeding 30 m high that maintain their leaves throughout the year. The forest is composed of several strata [28]: high arboreal (40 m), low arboreal (20-30 m), high shrubby (10-15 m) and low shrubby (less than 10 m).

The study area is a fragmented landscape in early stages of disturbance, with a predominance of continuous forest patches as well as large areas of induced grassland and itinerant farming [29]. The disturbances in the region are the result of forest fires, semi-intensive livestock, and extraction of timber trees [28]. This has resulted in a considerable loss of vegetation cover in a relatively short period, starting in the 1950s.

### *Site selection*

A spectral enhancement was done with orthorectified Landsat 7 ETM+ images using the normalized difference vegetation index (NDVI) as the first step in site selection [30, 31]. We then carried out a supervised classification on the resulting map, generating two categories: continuous vegetation areas and areas without apparent vegetation. We chose this dichotomous classification as we were unable to distinguish categories of vegetation reliably [29]. Upon this classification, 33 potential circular areas were delimited, each with a 4 km diameter. This size is a compromise between establishing a sufficiently small area, inside which biogeographical factors would not differ among the sites, and a sufficiently large area, where parameter measurements of communities (*e.g.*, abundance and species richness) would reflect statistically independent sampling units [5, 6, 32, 33].



**Fig. 1.** Study area, sampling sites and analysis scale (4 km in diameter) where the sensitivity to fragmentation of phyllostomid bats in Los Chimalapas tropical rainforest was evaluated. The first upper left frame shows (arrow) the Los Chimalapas rainforest in Mexico. The second frame shows the study area in Los Chimalapas.

We obtained seven structure measures for each circular area: forest coverage, patch density, mean patch size, edge density, mean patch form, mean proximity index, and Euclidian mean distance to the nearest neighbor. The measures were obtained using FRAGSTAT v3.3 [34]. All areas were ordered using a Principal Component Analysis (PCA), allowing us to recognize two large groups: continuous forest (CF) and fragmented forest (FF) areas [29]. CF areas were characterized by a larger forest cover proportion (> 84.96%), low patch density (< 1.27 patches/100 ha), and lower edge density (< 38.59 m/ha); while FF areas showed low forest cover (< 75.87%), high patch density (> 2.46 patches/100 ha), and higher edge density (> 62.07 m/ha). Six areas from both CF and FF were chosen based on accessibility (roads, trails) (Fig. 1); sampling sites were located in the geometrical center of each of the six sites.

### *Capture of bats*

The study was conducted from March 2010 to February 2012, and included two dry and two wet seasons. Each of the twelve sites was sampled for three nights in each season. The time interval between each capture session at each site was six months. In total, captures were done during 144 nights (12 sites\*3 nights/season\*2 wet seasons\*2 dry seasons). In each site, eight mist nets (6 x 2.5 m) were placed 20 m apart in a line along the vegetation trails. The nets were checked every 30 minutes during a period of approximately 8 hours each night (1800 h-0200 h), except on heavy rain days, during which the sampling period was shorter. Five nets were placed at the understory level (< 4 m) and three in the canopy level (> 6 m). Total sampling effort was of 125,049.6 m<sup>2</sup>n·h (square meters of net per-

hour). No significant differences (*t-student* test for two independent samples = 1.41,  $df = 6$ ,  $P = 0.206$ ) in the sampling mean effort between CF (69,139.26  $m^2n \cdot h$ ) and FF (55,910.4  $m^2n \cdot h$ ) were detected.

Bats were identified using dichotomous keys [35, 36] and classified using the nomenclature of Simmons [37]. We determined the sex, age, body mass and reproductive condition of each specimen following the recommendations of Kunz *et al.* [38]. Wing span, forearm size and length and width of each wing were measured with a caliper according to Norberg & Rayner [22]. All specimens captured were released undamaged. All adult bats were marked before release with a numbered nylon cable, placed as a necklace (marking weight < 5% of individual's weight), following the proposal of Gannon [39].

We captured 1,840 individuals from 29 phyllostomid bat species, of which 747 (25 species) were captured in CF and 1,093 (25 species) in FF area. The completeness of inventories was adequate (CF > 78.4%, FF > 77.1%), based on estimates of expected number of species obtained through the first-order jackknife estimator [29]. For purposes of this study, only 20 species were selected and nine species were excluded. Species that showed low abundance (< 4 captures) and low presence (< 4 sites), as well as species exclusive to FF or CF, were excluded (Appendix 2).

#### *Derivation of ecological traits*

Natural abundance of each species was calculated as the number of mean captures on each fragmented forest site divided by sampling effort ( $m^2n \cdot h$ ). Before the analysis, we applied a logarithmic transformation to the data. We considered mean body mass (logarithmic transformation) for each species as the mean value of all captured adult organisms, excluding pregnant females. The trophic level was obtained by recognizing three upper trophic guilds (frugivorous, nectarivorous, and omnivorous) [5, 7, 8, 23]. The vertical foraging area of each species was determined from previous studies describing their foraging habits [23-26], as well as from data of our captures in the study area. Therefore, three categories were established: understory species that forage from ground level up to 5 m, canopy species (> 6 m), and species without clear preference. Wing aspect ratio was obtained following Norber & Rayner [22]:  $A = B^2/S$ , where A = aspect ratio; B = wing span (m); S = wing area ( $m^2$ ), based on rectangular approximation (wing length\*wing width). Wing loading was obtained using the following equation [22]:  $C = Mg/S$ , where C = wing loading, Mg = mass in grams, g = gravitational acceleration ( $9.81 m/s^2$ ), and S = wing area.

#### *Statistical analysis*

We used three measures of sensitivity: i) species prevalence in fragmented sites, expressed as the site occupation ratio [13, 17]; ii) relative changes in abundance expressed as an index in fragmented forests compared to continuous forests [16, 17] and iii) nestedness ranking. The last measure considers the loss of species in a predictable order after fragmentation, caused by differential vulnerability to extinction among species. This selective loss results in a nested structure between ensembles [40, 41]. An ensemble is nested when species inhabiting low species richness sites are a subset of species inhabiting high species richness sites [42], and the nesting range is the order in which species are nested [19]. The nestedness ranking shows that species present in low richness sites also tend to be present at high richness sites (higher ranks). This is because they have less extinction vulnerability than species inhabiting only high diversity sites (lower rank) that have high extinction vulnerability [19, 40].

Table 1. Three measures of sensitivity to fragmentation of 20 species of phyllostomid bats in Los Chimalapas rainforest, Mexico.

Species (abbreviations)	Common name	Species prevalence	Change in abundance index	Nestedness Ranking
<i>Carollia sowelli</i> (Cso)	Sowell's Short-tailed Bat	0.833	0.018	3
<i>Sturnira lilium</i> (Slil)	Little Yellow-shouldered Bat	1.000	1.493	1
<i>Artibeus lituratus</i> (Alit)	Great Fruit-eating Bat	1.000	1.222	6
<i>Artibeus jamaicensis</i> (Ajam)	Jamaican Fruit-eating Bat	1.000	0.095	1
<i>Artibeus watsoni</i> (Awat)	Thomas's Fruit-eating Bat	1.000	0.317	1
<i>Glossophaga morenoi</i> (Gmor)	Western Long-tongued Bat	1.000	2.130	4
<i>Glossophaga soricina</i> (Gsor)	Pallas's Long-tongued Bat	0.833	1.964	10
<i>Glossophaga commissarisi</i> (Gcom)	Commissaris's Long-tongued Bat	0.333	-0.206	11
<i>Carollia perspicillata</i> (Cper)	Seba's Short-tailed Bat	0.833	0.872	7
<i>Vampyroides caraccioli</i> (Vcar)	Great Stripe-faced Bat	0.833	-1.170	2
<i>Centurio senex</i> (Csen)	Wrinkle-faced Bat	0.667	-0.729	8
<i>Artibeus phaeotis</i> (Dpha)	Pygmy Fruit-eating Bat	0.667	-0.688	5
<i>Phyllostomus discolor</i> (Pdis)	Pale Spear-nosed Bat	0.500	-1.355	9
<i>Sturnira ludovici</i> (Slud)	Highland Yellow-shouldered Bat	0.333	-2.084	13
<i>Choeroniscus godmani</i> (Cgod)	Godman's Long-tailed Bat	0.500	1.414	14
<i>Platyrrhinus helleri</i> (Phel)	Heller's Broad-nosed Bat	0.500	-0.451	12
<i>Glossophaga leachii</i> (Glea)	Gray's Long-tongued Bat	0.333	-0.761	16
<i>Artibeus toltecus</i> (Atol)	Toltec Fruit-eating Bat	0.167	-1.395	19
<i>Carollia subrufa</i> (Csub)	Gray Short-tailed Bat	0.167	-1.143	17
<i>Chiroderma salvini</i> (Csal)	Salvin's Big-eyed Bat	0.333	0.288	15

An arcsine transformation was applied to the fragmented site occupancy ratio (*i.e.* species prevalence). Changes in abundance were calculated with the following equation:  $y = \ln(RA_{FF}/RA_{CF})$ , where  $y$  = change in abundance, and  $RA$  = relative abundance in CF and FF area, respectively (Table 1). Nestedness ranking was obtained from the analysis of an absence-presence matrix with the BINMATNEST program [43]. The nesting of a matrix is measured by temperature index; it takes into account unexpected presence or absence of species, or disorder in the system, where 0° temperatures correspond to a perfectly nested matrix and 100° indicates a random distribution pattern [44, 45]. The BINMATNEST program calculations are based on genetic algorithms to reorder rows and columns that lead to the matrix's minimum temperature [43]. Analysis results provided a set of three null alternative models that evaluate matrix statistical significance; significance is estimated from 5,000 random matrixes (Appendix 1). We used the third null model following the recommendations of Rodríguez-Gironés & Santamaría [43], since this model provides calculations associated with lower Type I statistical errors.

Table 2. Ecological traits employed to determine sensitivity to fragmentation of phyllostomid bats in Los Chimalapas tropical rainforest, Mexico.

Species	BM	NA	TL	WAR	RWL	VF
<i>Carollia sowelli</i>	17.56	0.00044	1	5.83	10.33	1
<i>Sturnira lilium</i>	18.01	0.00013	1	6.03	11.98	3
<i>Artibeus lituratus</i>	65.89	0.00013	1	6.03	15.26	3
<i>Artibeus jamaicensis</i>	47.07	0.00023	1	6.07	14.42	3
<i>Artibeus watsoni</i>	13.79	0.00019	1	5.86	9.10	1
<i>Glossophaga morenoi</i>	10.80	0.00004	2	5.97	9.30	1
<i>Glossophaga soricina</i>	10.67	0.00002	2	5.83	9.03	1
<i>Glossophaga commissarisi</i>	10.88	0.00011	2	5.79	9.54	1
<i>Carollia perspicillata</i>	21.14	0.00005	1	5.66	10.31	1
<i>Vampyroides caraccioli</i>	35.10	0.00010	1	6.21	12.51	3
<i>Centurio senex</i>	20.32	0.00005	3	5.90	11.98	1
<i>Artibeus phaeotis</i>	12.45	0.00004	1	5.89	9.78	2
<i>Phyllostomus discolor</i>	38.14	0.00004	3	6.41	13.92	1
<i>Sturnira ludovici</i>	20.15	0.00004	1	5.97	11.11	3
<i>Choeroniscus godmani</i>	11.29	0.00001	2	6.07	10.08	1
<i>Platyrrhinus helleri</i>	17.56	0.00002	1	6.13	11.01	3
<i>Glossophaga leachii</i>	11.89	0.00001	2	6.01	10.88	1
<i>Artibeus toltecus</i>	15.00	0.00001	1	5.85	10.26	2
<i>Carollia subrufa</i>	18.20	0.00001	1	5.52	10.89	1
<i>Chiroderma salvini</i>	29.50	<0.00001	1	6.21	12.99	3

Where BM = body mass (g); NA = natural abundance in continuous forests; TL = trophic level (1 = frugivorous; 2 = nectarivorous; 3 = omnivorous); WAR = wing aspect ratio; RWL = relative wing loading; VF = vertical foraging area (1 = understory; 2 = without preference; 3 = canopy).

In order to arrange the species according to sensitivity to fragmentation and determine coincidences, a non-metric multidimensional scaling analysis (MDS) of a dissimilarity matrix (Bray-Curtis index) was used [46]. Analysis was run using MASS v7.3-9 package [47] on R v3.0.0 platform [48]. Independent analyses were conducted to evaluate the relationship between the six ecological traits of phyllostomid bats previously mentioned (Table 2), with three measures of sensitivity to fragmentation using Generalized Linear Models (GLM). Gaussian-type error approximation was used to evaluate prevalence and change in abundance, while Poisson-type error was used to evaluate nestedness ranking [49]. The goodness-fit of each response variable was evaluated based on the global model as percentage deviance explained [49].

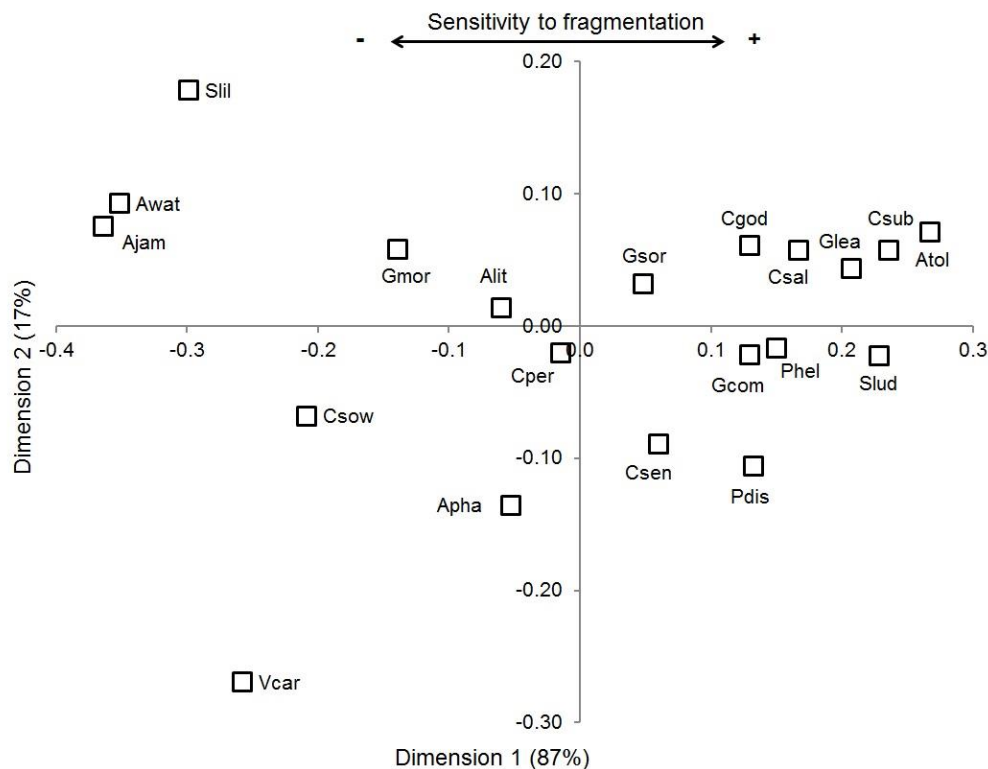
For the model selection procedure, we performed an automated routine to “dredge” with the MuMIn v1.9.5 package [50] on R, which generates all possible combinations of explanatory variables and arranges the best models based on Akaike information criterion corrected for small sample sizes (AICc) [51]. Each model was arranged according to its AICc,  $\Delta AICc$  (differences between respective and most parsimonious models) and  $W_i$  (normalized AICc weight). It has been proposed that models with  $\Delta AICc \leq 2$  have high support, models with 4-7 have low support, and models  $\geq 10$  have none [51]. Therefore, we considered models with  $\Delta AICc < 4$ . The  $W_i$  is interpreted as the probability of an  $i$  model to be the best model for the observed data, given the set of candidate models. These models are additive and can be combined to form a confidence set of models, with a particular probability that the best model is included in the confidence set [51, 52].



Parameter estimation was based on an averaging model procedure, which implies calculating average AICc weight of different candidate models and estimating regression coefficients based on the confidence set [51]. Unconditional standard error is estimated likewise, which evaluates model precision over the set of models and provides a confidence interval in parameters estimation that accounts for uncertainty associated with model selection [51, 52]. Calculations were performed using MuMIn packing.

## Results

The MDS analysis shows a high explicative power (stress = 0.063, [54]), which indicates high coincidence in measures of sensitivity to fragmentation. The analysis describes a sensitivity gradient (Fig. 2) determined largely by its first dimension (87% of variance explained). The gradient shows that certain species—Jamaican Fruit-eating Bat (*Artibeus jamaicensis*), Thomas's Fruit-eating Bat (*A. watsoni*) and Little Yellow-shouldered Bat (*Sturnira lilim*)—are less sensitive to fragmentation; while others—Toltec Fruit-eating Bat (*A. toltecus*), Salvin's Big-eyed Bat (*Chiroderma salvini*) and Gray's Long-tongued Bat (*Glossophaga leachii*)—are more sensitive.



**Fig. 2. Ordering of phyllostomid bat species based in three measures of sensitivity to fragmentation throughout dimensions of non-metrical multidimensional scaling. The first dimension describes the degree of sensitivity to fragmentation (87% dissimilitude variation). Complete species names and abbreviations are found in Table 1.**

The model selection procedure shows that in none of the cases a single best model had high support (*i.e.*,  $W_{max} \geq 0.9$ ) (Table 3). For species prevalence, the model that includes the natural abundance variable (NA,  $W_i = 0.46$ ) is supported 3.8 times more than the second best candidate model, which includes natural abundance and vertical foraging area ( $W_i = 0.12$ , NA + VF). The first five models formed a 90% confidence set. Estimated parameters under the confidence set indicate a positive relationship between species prevalence and natural abundance (Table 4).

For change in abundance the best candidate model was the null model (*i.e.*, the model that does not include any exploratory variable,  $W_i = 0.36$ ). The second best model ( $W_i = 0.12$ ) includes body mass and is supported three times less than the best model. The best supported model for nestedness ranking includes natural abundance and wing aspect ratio ( $W_i = 0.22$ ). This model is supported 1.1 more times than the second best model ( $W_i = 0.20$ ), which includes only natural abundance. The confidence set is formed by the first nine models (92%); estimated parameters indicate a negative relationship between nestedness ranking and natural abundance and wing aspect ratio. Nonetheless, the magnitude of the coefficient associated with natural abundance is much higher than that of the wing aspect ratio, indicating the greater importance of the first.

Table 3. Results of model selection of the relationship between three measures of sensitivity to fragmentation with six ecological traits of phyllostomid bats in Los Chimalapas tropical rainforest, Mexico.

Response Variable	Model	K	Log (L)	AICc	$\Delta$ AICc	$W_i$
Species prevalence (deviance = 83.26%)	NA	3	-8.04	23.57	0.00	0.46
	NA + VF	4	-7.82	26.30	2.72	0.12
	NA + BM	4	-7.88	26.42	2.85	0.11
	NA + RWL	4	-7.89	26.44	2.87	0.11
	NA + TL	4	-7.92	26.52	2.94	0.10
	NA + WAR	4	-7.93	26.53	2.95	0.10
Change in Abundance (deviance = 0%)	NULL	2	-31.63	67.98	0.00	0.36
	BM	3	-31.33	70.16	2.19	0.12
	RWL	3	-31.37	70.24	2.27	0.12
	VF	3	-31.42	70.35	2.37	0.11
	NA	3	-31.48	70.47	2.49	0.10
	WAR	3	-31.57	70.63	2.66	0.10
	TL	3	-31.63	70.75	2.78	0.09
Nestedness ranking (deviance = 66.09%)	NA + WAR	3	-51.04	109.57	0.00	0.22
	NA	2	-52.52	109.75	0.17	0.20
	NA + VF	3	-51.96	111.41	1.84	0.09
	NA + TL	3	-51.97	111.44	1.87	0.09
	NA + BM	3	-52.03	111.56	1.99	0.08
	NA + RWL	3	-52.14	111.77	2.20	0.07
	NA + WAR + TL	4	-50.58	111.84	2.26	0.07
	NA + WAR + BM	4	-50.98	112.63	3.06	0.05
	NA + WAR + VF	4	-51.02	112.71	3.13	0.05
	NA + WAR + EWL	4	-51.04	112.74	3.17	0.05
	NA + WAR + VF + TL	5	-49.56	113.40	3.83	0.03

The considered models were those with a  $\Delta$ AICc < 4. Where K = number of parameters; Log(L) = log-likelihood; AICc = Akaike Information Criterion corrected for small-sized samples;  $\Delta$ AICc = difference between each model's AICc and best model candidate;  $W_i$  = model weight; BM = body mass; NA = natural abundance in continuous forests; TL = trophic level; WAR = wing aspect ratio; RWL = relative wing loading; VF = vertical foraging area.

## Discussion

Species prevalence and nestedness ranking showed high coincidence, suggesting that each one could be a reliable predictor of species vulnerability. Species prevalence is an index widely used [13, 53], and is employed as a predictor of metapopulation viability [54]. It also has been observed that nestedness ranking reflects the level of sensitivity to habitat fragmentation in ensembles with nested distribution [19, 40, 55].

The change in abundance index shows little relation to explicative variables. Originally, this index was designed to evaluate changes in abundance in experimentally controlled units (size and composition of patches, [16]) and has been adapted as an indirect measure of sensitivity to fragmentation [17]. The index evaluates the change in abundance of islands compared to continuous forest mainland. This index could show unpredictable behavior in fragmented terrestrial systems, because the change in abundance depends on the intensity of the disturbance, the elements present in the fragmented landscape, and the tolerance of the species and capacity of adaptation to those elements [6, 32, 56].

Species prevalence and nestedness ranking coincide in identifying natural abundance in continuous forests as a variable associated with sensitivity to fragmentation. This suggests that less abundant species, with presumably smaller population sizes, are more likely to decline due to habitat fragmentation, and are therefore at greater risk of local extinction [4, 16, 17]. Species with small population sizes are more vulnerable to phenomena such as demographic and environmental stochasticity, genetic deterioration, and social dysfunction [4, 57]. The importance of natural abundance has been widely shown for bird species [19, 57-59], and partially for tropical bats [17].

Table 4. Estimated parameters for each response variable based on the confidence set. Unconditional standard errors and significance in parenthesis. Significant values are shown in bold.

Variable/Response variable	Species prevalence	Change in abundance	Nestedness ranking
Natural abundance	<b>0.29 (0.08, &lt;0.001)</b>	0.12 (0.25, 0.626)	<b>-0.47 (0.07, &lt;0.001)</b>
Relative wing loading	0.05 (0.05, 0.637)	-0.10 (0.16, 0.517)	-0.02 (0.06, 0.652)
Wing aspect ratio	1.05 (2.62, 0.690)	-2.71 (8.28, 0.743)	-3.41 (2.45, 0.164)
Body mass	0.09 (0.19, 0.628)	-0.39 (0.57, 0.487)	-0.12 (0.19, 0.517)
Trophic level	-0.05 (0.14, 0.684)	0.05 (0.44, 0.910)	0.14 (0.15, 0.344)
Vertical foraging area	0.05 (0.10, 0.566)	-0.18 (0.31, 0.562)	0.01 (0.19, 0.951)

In contrast, natural abundance also suggests that species with large population sizes could be less affected by habitat fragmentation [4, 12, 13]. This is because species with higher natural abundance have a greater dispersion capacity amongst patches [17, 27, 60]. In addition, species that tolerate and exploit resources in modified habitats could adapt efficiently to changes in patches (5, 7, 8, 56), particularly to the edge effect.

In insular systems, strong evidence indicates that tropical bats displaying low tolerance to edge effect are predisposed to population declines because of habitat fragmentation [17]. However, the magnitude of edge effect depends on the degree of contrast between matrix and patches; a greater effect is observed in high contrast landscapes [11, 12], and possibly is less severe in fragmented terrestrial landscapes [7, 61-63] because the contrast between border and matrix is less pronounced [63]. Additionally, bats are able to use elements of fragmented landscapes such as corridors, stepping-stones, and even the vegetation matrix [3, 56, 64]. Therefore, it is difficult to expect the same edge effect in terrestrial and insular systems [63], though this still needs to be further studied.

The results suggest that species such as Toltec Fruit-eating Bat (*Artibeus toltecus*), Gray's Long-tongued Bat (*Glossophaga leachii*), Salvin's Big-eyed Bat (*Chiroderma salvini*), Gray Short-tailed Bat (*Carollia subrufa*), and Highland Yellow-shouldered Bat (*Sturnira ludovici*) are highly sensitive to habitat fragmentation. These species are locally less abundant in their distribution range in Mexico and exhibit small population sizes, which in the case of *A. toltecus* has been estimated at less than 300 individuals [65]. They also show high preference for large forest patches and continuous forests (e.g., *C. salvini* and *G. leachii*) [66, 67]. In addition, the habitat requirements of these species are specific, such as *A. toltecus* that makes roosting tents and forms small aggregations of a few individuals [65].

These less abundant species show low mobility, which limits their movement across the fragmented landscape. This is the case of small frugivorous bats of the genus *Artibeus* (including to *A. toltecus*) and Long-legged Bat (*Macrophyllum macrophyllum*) that have a small home range (~ 3.6 ha) and an area of specific foraging [68, 69]. Other phyllostomid bats that have a low mobility are Striped Hairy-nosed Bat [*Mimon crenulatum*] (night movement 0.8 km), Fringe-lipped Bat [*Trachops cirrhosis*] (1.9 km), White-throated Round-eared Bat [*Lophostoma silvicolum*] (0.9 km), Fischer's Little Fruit Bat [*Rhinophylla fischeriae*] (0.3 km), and Pallas's Long-tongued Bat [*Glossophaga soricina*] (0.2 km) [70]

In contrast, species such as Thomas's Fruit-eating Bat (*Artibeus watsoni*), Jamaican Fruit-eating Bat (*A. jamaicensis*), Little Yellow-shouldered Bat (*Sturnira lilium*) and Sowell's Short-tailed Bat (*Carollia sowelli*) may be less affected, and may even benefit from habitat fragmentation [8, 9, 56]. *A. jamaicensis* and *S. lilium* are tolerant to disturbance and prefer foraging in farmland and forests with secondary vegetation [7, 9]. Further, these species show high mobility; this is the case of *S. lilium* (night movement 3 km), Seba's Short-tailed Bat [*Carollia perspicillata*] (2.2 km), Sowell's Short-tailed Bat [*C. sowelli*] (5.6 km), Jamaican Fruit-eating Bat [*A. jamaicensis*] (2.7 km) and Brown Tent-making Bat [*Uroderma magnirostrum*] (3.2 km) [70].

Unlike other studies where morphological wing traits—wing aspect ratio and relative wing loading—are intimately related to the extinction risk of bats [21, 27], we found weak evidence (nestedness ranking) of the effect of wing aspect ratio on extinction risk. In general, these variables had low predictive power, probably because of the range of variation of wing aspect ratio and relative wing loading is low in the analyzed species [17]. These were mostly species dependent on forests or occupants of closed-vegetation environments. We did not include insectivorous open-space species, which would have allowed greater contrast in the analysis [22].

We did not find evidence of a relationship between body mass and sensitivity to fragmentation. Empirical studies amongst mammal and bird communities report a number of different patterns of the relation between body size and extinction risk: positive [71, 72], negative [73], and unrelated [12, 58]. The relationship between body size and extinction rate shows a high degree of complexity, and observed patterns are unclear [16], since body size can be correlated to other more important variables such as abundance, population fluctuations, and population growth rates [4, 16]. The relationship between abundance and body size remains unclear [72, 74].

Evidence of trophic level and vertical foraging area effects on sensitivity to fragmentation was not found, thus coinciding with previous studies [17]. A variable more important and descriptive than trophic level could be diet specialization, but this variable was not included; detailed descriptions of the diets of species within our area of study do not exist, and existing descriptions show high geographical variation [75-77]. On the other hand, vertical foraging area is a highly flexible trait [26] and a sole species can use several forest strata [24, 26]. It is also possible that vertical foraging area does not reflect the degree of habitat specialization. Finally, we recommend the inclusion of other variables in further studies that could have more predictive power, such as edge tolerance, diet specialization, mobility, population fluctuation, and population growth rate.



**Fig. 3. (A) Salvin's Big-eyed Bat (*Chiroderma salvini*), (B) Heller's Broad-nosed Bat (*Platyrrhinus helleri*) and (C) Thomas's Fruit-eating Bat (*Artibeus watsoni*).**

### Implications for conservation

We found natural abundance in continuous forests to be highly related to sensitivity to fragmentation in the species studied (Fig. 3). This finding is relevant because natural abundance and population size are fundamental to determining the degree of sensitivity to fragmentation and local extinction risk of a species. The adequate identification of these traits, not only in bats but also in other groups such as non-flying mammals, birds, reptiles, and amphibians could be essential for effective species-specific conservation strategies [4, 11, 12, 14].

Conservation strategies that have been proposed include ensuring the presence of a high proportion and density of large patches, as well as maintaining vegetation corridors to promote the effective connectivity and persistence of naturally low abundant species in fragmented landscapes [1, 6, 29]. It is also important to promote the recovery of areas with secondary vegetation in advanced successional stages and the conservation of plant species that are the diet of several phyllostomid bats [7, 77]. The application of these strategies is particularly important in our study area because Los Chimalapas is the last rainforest areas in Mexico with high biodiversity, which is under severe pressure from human activities [28, 29].

### Acknowledgements

The Consejo Nacional de Ciencia y Tecnología of Mexico (CONACyT) granted a doctoral studies scholarship (No. 228955) to the first author. This investigation had financial support from the Secretaría de Investigación y Posgrado of the Instituto Politécnico Nacional of Mexico (IPN) through projects SIP-20100377, SIP-20110395 and SIP- 20120962; and from the Programa Institucional de Formación de Investigadores (PIFI). We are grateful for the comments to improve this document of D. Mondragón, G. Ramos, R. del Castillo and R. Solano. We thank the municipal authorities of Santa María Chimalapa and those persons who provided invaluable assistance in the field work.

### References

- [1] Fischer, J. and Lindenmayer, D. B. 2007. Landscape modification and habitat fragmentation: A synthesis. *Global Ecology and Biogeography* 16:265-280.
- [2] Turner, I. M. 1996. Species loss in fragments of tropical rain forest: a review of the evidence. *Journal of Applied Ecology* 33:200-209.
- [3] Fahrig, L. 2003. Effects of habitat fragmentation on biodiversity. *Annual Review of Ecology, Evolution, and Systematics* 34:487-515.

- [4] Henle, K., Davies, K. F., Kleyer, M., Margules, C. and Settele, J. 2004. Predictors of species sensitivity to fragmentation. *Biodiversity and Conservation* 13:207-251.
- [5] Meyer, C. F. J. and Kalko, E. K. V. 2008. Assemblage-level responses of phyllostomid bats to tropical forest fragmentation: Land-bridge islands as a model system. *Journal of Biogeography* 35:1711-1726.
- [6] Gorresen, P. M. and Willig, M. R. 2004. Landscape responses of bats to habitat fragmentation in Atlantic forest of Paraguay. *Journal of Mammalogy* 85:88-697.
- [7] Estrada, A. and Coates-Estrada, R. 2002. Bats in continuous forest, forest fragments and in an agricultural mosaic habitat-island at Los Tuxtlas, Mexico. *Biological Conservation* 103:237-245.
- [8] Faria, D. 2006. Phyllostomid bats of a fragmented landscape in the north-eastern Atlantic forest, Brazil. *Journal of Tropical Ecology* 22:531-542.
- [9] Medellín, R., Equihua, M. and Amin, M. 2000. Bat diversity and abundance as indicators of disturbance in Neotropical rainforests. *Conservation Biology* 14:1666-1675.
- [10] Patterson, B. D., Willig, M. R. and Stevens, R. D. 2003. Trophic strategies, niche partitioning, and patterns of ecological organization. In: *Bat Ecology*. Kunz, T. H. and Fenton, M. B. (Eds.), pp. 536-579. University of Chicago Press.
- [11] Ewers, R. M. and Didham, R. K. 2006. Confounding factors in the detection of species responses to habitat fragmentation. *Biological Reviews* 81:117-142.
- [12] Laurance, W. F. 1991. Ecological correlates of extinction proneness in Australian tropical rain forest mammals. *Conservation Biology* 5:79-89.
- [13] Viveiros de Castro, E. B. and Fernandez, F. A. 2004. Determinants of differential extinction vulnerabilities of small mammals in Atlantic forest fragments in Brazil. *Biological Conservation* 119:73-80.
- [14] Purvis, A., Gittleman, J. L., Cowlshaw, G. and Mace, G. M. 2000. Predicting extinction risk in declining species. *Proceedings of the Royal Society of London. Series B: Biological Sciences* 267:1947-1952.
- [15] Kotiaho, J., Kaitala, V., Komonen, A. and Päivinen, J. 2005. Predicting the risk of extinction from shared ecological characteristics. *Proceedings of the National Academy of Sciences of the United States of America* 102:1963-1967.
- [16] Davies, K., Margules, C. and Lawrence, J. 2000. Which traits of species predict population declines in experimental forest fragments? *Ecology* 81:1450-1461.
- [17] Meyer, C. F. J., Fründ, J., Lizano, W. P. and Kalko, E. K. V. 2008. Ecological correlates of vulnerability to fragmentation in Neotropical bats. *Journal of Applied Ecology* 45:381-391.
- [18] Murray, B. R. and Hose, G. C. 2005. Life-history and ecological correlates of decline and extinction in the endemic Australian frog fauna. *Austral Ecology* 30:564-571.
- [19] Feeley, K. J., Gillespie, T. W., Lebbin, D. J. and Walter, H. S. 2007. Species characteristics associated with extinction vulnerability and nestedness rankings of birds in tropical forest fragments. *Animal Conservation* 10:493-501.
- [20] Wang, Y., Zhang, J., Feeley, K. J., Jiang, P. and Ding, P. 2009. Life-history traits associated with fragmentation vulnerability of lizards in the Thousand Island Lake, China. *Animal Conservation* 12:329-337.
- [21] Jones, K. E., Purvis, A. and Gittleman, J. L. 2003. Biological correlates of extinction risk in bats. *The American Naturalist* 161:601-614.
- [22] Norberg, U. and Rayner, J. 1987. Ecological morphology and flight in bats (Mammalia; Chiroptera): wing adaptations, flight performance, foraging strategy and echolocation. *Philosophical Transactions of the Royal Society of London. Series B, Biological Sciences* 316:335-427.
- [23] Kalko, E. K. V. 1998. Organisation and diversity of tropical bat communities through space and time. *Zoology* 101:281-297.
- [24] Bernard, E. 2001. Vertical stratification of bat communities in primary forests of Central Amazon, Brazil. *Journal of Tropical Ecology* 17:115-126.

- [25] Pereira, M. J. R., Marques, J. T. and Palmeirim, J. M. 2010. Vertical stratification of bat assemblages in flooded and unflooded Amazonian forests. *Current Zoology* 56:469-478.
- [26] Rex, K., Michener, R., Kunz, T. H. and Voigt, C. C. 2011. Vertical stratification of Neotropical leaf-nosed bats (Chiroptera: Phyllostomidae) revealed by stable carbon isotopes. *Journal of Tropical Ecology* 27:211-222.
- [27] Safi, K. and Kerth, G. 2004. A Comparative Analysis of Specialization and Extinction Risk in Temperate-Zone Bats. *Conservation Biology* 18:1293-1303.
- [28] Salas-Morales, S. H., Schibli, L. and Torres-Bahena, E. 2001. La importancia Ecológica y Biológica. In: *Chimalapas: la última oportunidad*. World Wildlife Found Program, and Secretaria de Medio Ambiente, Recurso Naturales y Pesca (Eds.), pp. 27-47. Taller el Castor, Oaxaca, Mexico.
- [29] García-García, J. L. and Santos-Moreno, A. 2014. Efectos de la estructura del paisaje y de la vegetación en la diversidad de murciélagos filostómidos (Chiroptera: Phyllostomidae) de Oaxaca, México. *Revista de Biología Tropical* 62:217-240.
- [30] Sellers, P. J., Berry, J. A., Collatz, G. J., Field, C. B. and Hall, F. G. 1992. Canopy reflectance, photosynthesis, and transpiration. III. Remote sensing of environment 42:187-216.
- [31] Pettorelli, N., Vik, J. O., Mysterud, A., Gaillard, J. -M., Tucker, C. J. and Stenseth, N. C. 2005. Using the satellite-derived normalized difference vegetation index (NDVI) to assess ecological effects of environmental change. *Trends in Ecology and Evolution* 20:503-510.
- [32] Klingbeil, B. T. and Willig, M. R. 2009. Guild-specific responses of bats to landscape composition and configuration in fragmented Amazonian rainforest. *Journal of Applied Ecology* 46:203-213
- [33] Gorresen, P. M., Willig, M. R. and Strauss, R. E. 2005. Multivariate analysis of scale dependent associations between bats and landscape. *Ecological Applications* 15:2126-2136.
- [34] McGarigal, K., Cushman, S. A., Neel, M. C. and Ene, E. 2002. *FRAGSTATS: Spatial Pattern Analysis Program for Categorical Maps*. University of Massachusetts.
- [35] Álvarez, T., Álvarez-Castañeda, S. T. and López-Vidal, J. C. 1994. *Claves para murciélagos mexicanos*. Centro de Investigaciones Biológicas del Noroeste/Escuela de Ciencias Biológicas, Instituto Politécnico Nacional, Mexico.
- [36] Medellín, R. A., Arita, H. T. and Sánchez, O. 1997. *Identificación de los murciélagos de México, clave de campo*. Publicaciones Especiales, Asociación Mexicana de Mastozoología, A. C., Mexico.
- [37] Simmons, N. B. 2005. Order Chiroptera. In: *Mammal species of the world: A taxonomic and geographic reference*. Wilson, D. E. and Reeder, D. M. (Eds.), pp. 312-529. Johns Hopkins University, Baltimore, Maryland.
- [38] Kunz, T. H., Wemmer, C. and Hayssen, V. 1996. Sex, age and reproductive condition of mammals. In: *Measuring and monitoring biological diversity standard methods for mammals*. Wilson, D. E., Nichols, J., Rudrin, R. Cole, R. and Foster, M. (Eds.), pp. 279-290. Smithsonian Institution Press, Washington, DC.
- [39] Gannon, M. R 1994. A new method for marking bats. *Bat Research News* 34:88-89.
- [40] Bolger, D., Alberts, A. and Soule, M. 1991. Occurrence patterns of bird species in habitat fragments: sampling, extinction, and nested species subsets. *The American Naturalist* 137:155-166.
- [41] Patterson, B. D. and Atmar, W. 2000. Analyzing species composition in fragments. In: *Isolated vertebrate communities in the tropics*. Rheinwald, G. (Ed.), pp. 93-108. Bonner Zoologische Monographien, Bonn, Germany
- [42] Patterson, B. D. and Atmar, W. 1986. Nested subsets and the structure of insular mammalian faunas and archipelagos. *Biological Journal of the Linnean Society* 28:65-82.
- [43] Rodríguez-Gironés, M. A. and Santamaría, L. 2006. A new algorithm to calculate the nestedness temperature of presence-absence matrices. *Journal of Biogeography* 33:924-935.
- [44] Wright, D. H., Patterson, B. D., Mikkelsen, G. M., Cutler, A. and Atmar, W. 1998. A comparative analysis of nested subset patterns of species composition. *Oecologia* 113:1-20.
- [45] Ulrich, W., Almeida-Neto, M. and Gotelli, N. J. 2009. A consumer's guide to nestedness analysis. *Oikos* 118:3-17.

- [46] McCune, B. and Grace, J. B. 2002. *Analysis of ecological communities*. MJM Software Design, Gleneden Beach, Oregon.
- [47] Venables, W. N. and Ripley, B. D. 2002. *Modern Applied Statistics with S*. Springer-Verlag, New York, fourth edition.
- [48] R Development Core Team. 2009. *R: A Language and Environment for Statistical Computing*. R Foundation for Statistical Computing, Vienna, Austria.
- [49] Logan, M. 2011. *Biostatistical design and analysis using R: a practical guide*. Wiley-Blackwell.
- [50] Barton, K. 2013. MuMIn: Multi-model inference, R package version 1.9.0.
- [51] Burnham, K. P. and Anderson, D. R. 2002. *Model Selection and Multimodel Inference: A Practical Information-Theoretic Approach*. Springer-Verlag, New York.
- [52] Johnson, J. B. and Omland, K. S. 2004. Model selection in ecology and evolution. *Trends in Ecology and Evolution* 19:101-108.
- [53] Swihart, R. K., M. Gehring, T., Kolozsvary, M. B. and Nupp, T. E. 2003. Responses of 'resistant' vertebrates to habitat loss and fragmentation: the importance of niche breadth and range boundaries. *Diversity and Distributions* 9:1-18.
- [54] Vos, C. C., Verboom, J., Opdam, P. F. M. and ter Braak, C. J. F. 2001. Toward ecologically scaled landscape indices. *American Naturalist* 157:24-41.
- [55] Martínez-Morales, M. 2005. Nested species assemblages as a tool to detect sensitivity to forest fragmentation: the case of cloud forest birds. *Oikos* 108:634-642.
- [56] Willig, M. R., Presley, S., Bloch, C. and Hice, C. 2007. Phyllostomid bats of lowland Amazonia: effects of habitat alteration on abundance. *Biotropica* 39:737-746.
- [57] Pimm S. L., Diamond, J., Reed, T. M., Russell, G. J. and Verner, J. 1993. Times to extinction for small populations of large birds. *Proceedings of the National Academy of Sciences* 90:10871-10875.
- [58] Rosenzweig, M. L. and Clark, C.W. 1994. Island extinction rates from regular censuses. *Conservation Biology* 8:491-494.
- [59] Anjos, L. 2006. Bird Species Sensitivity in a Fragmented Landscape of the Atlantic Forest in Southern Brazil. *Biotropica* 38:229-234.
- [60] Burland, T. M., Barratt, E. M., Beaumont, M. A. and Racey, P. A. 1999. Population genetic structure and gene flow in a gleaning bat, *Plecotus auritus*. *Proceedings of the Royal Society of London. Series B: Biological Sciences* 266:975-980.
- [61] Delaval, M. and Charles-Dominique, P. 2006. Edge effects on frugivorous and nectarivorous bat communities in a neotropical primary forest in French Guiana. *Revue d'écologie-la terre et la vie* 61:343-352.
- [62] Cortés-Delgado, N. and Pérez-Torres, J. 2011. Habitat edge context and the distribution of phyllostomid bats in the Andean forest and anthropogenic matrix in the Central Andes of Colombia. *Biodiversity and Conservation* 20:987-999.
- [63] Groenenberg, M. 2012. *Matrix-mitigated edge and area effects on Neotropical bats in a fragmented landscape*. MSc Dissertation. Imperial College, London, England.
- [64] Castro-Luna, A. A., Sosa, V. J. and Castillo-Campos, G. 2007. Bat diversity and abundance associated with the degree of secondary succession in a tropical forest mosaic in south-eastern Mexico. *Animal Conservation* 10:219-228.
- [65] García-García, J. L., Santos-Moreno, A and Rodríguez-Alamilla, A. 2010. Population dynamics of the bat *Dermanura tolteca* (Chiroptera: Phyllostomidae) in a tropical forest in Mexico. *Revista de Biología Tropical* 58:1323-1334.
- [66] Clarke, F. M., Pio, D. V. and Racey, P. A. 2005. A Comparison of Logging Systems and Bat Diversity in the Neotropics. *Conservation Biology* 19:1194-1204.
- [67] Stoner, K. E. 2002. Murciélagos nectarívoros y frugívoros del bosque caducifolio de la Reserva de la Biosfera Chamela-Cuixmala. In: *Historia natural del bosque caducifolia de Chamela*. Noguera, F. A., Vega, J., Garcia-Aldrete, A. and Quesada, M. (Eds.), pp. 379-395. Instituto de Biología, Universidad Nacional Autónoma de México, Mexico.



- [68] Meyer, C. F., Weinbeer, M. and Kalko, E. K. 2005. Home-range size and spacing patterns of *Macrophyllum macrophyllum* (Phyllostomidae) foraging over water. *Journal of Mammalogy* 86:587-598.
- [69] Chaverri, G., Quirós, O. E., Gamba-Rios, M. and Kunz, T. H. 2007. Ecological Correlates of Roost Fidelity in the Tent-Making Bat *Artibeus watsoni*. *Ethology* 113:598-605.
- [70] Bernard, E. and Fenton, M. 2003. Bat mobility and roosts in a fragmented landscape in central Amazonia, Brazil. *Biotropica* 35:262-277.
- [71] Kattan, G. H., Alvarez-López, H. and Giraldo, M. 1994. Forest fragmentation and bird extinctions: San Antonio eighty years later. *Conservation Biology* 8:138-146.
- [72] Gaston, K. J. and Blackburn, T. M. 1996. Conservation implications of geographic range size–body size relationships. *Conservation Biology* 10: 638-646.
- [73] Soulé, M. E., Bolger, D. T., Alberts, A. C., Sauvajot, R. S., Wright, J., Sorice M. and Hill, S. 1988. Reconstructed dynamics of rapid extinctions of chaparral-requiring birds in urban habitat islands. *Conservation Biology* 2:75-92.
- [74] Blackburn, T. M and Gaston, K. J. 1997. A critical assessment of the form of the interspecific relationship between abundance and body size in animals. *Journal of Animal Ecology* 66:233-249.
- [75] Heithaus, E. R., Fleming, T. H. and Opler, P. A. 1975. Foraging patterns and resource utilization in seven species of bats in a seasonal tropical forest. *Ecology* 56:841-854.
- [76] da Silva, A. G., Gaona, O. and Medellín, R. A. 2008. Diet and Trophic Structure in a Community of Fruit-Eating Bats in Lacandon Forest, México. *Journal of Mammalogy* 89:43-49.
- [77] Thies, W. and Kalko, E. K. V 2004. Phenology of neotropical pepper plants (Piperaceae) and their association with their main dispersers, two short-tailed fruit bats, *Carollia perspicillata* and *C. castanea* (Phyllostomidae). *Oikos* 104:362-376.

**Appendix 1.** Nestedness ranking based on an absence-presence matrix of the phyllostomid bat community in twelve sites in Los Chimalapas rainforest. The matrix is ordered (matrix temperature  $T = 32.95$ ,  $P < 0.001$ ) to maximize nesting according to Rodríguez-Gironés & Santamaría (2006). Species vulnerable to extinction are present only in sites diverse in number of species, and they have low rank. Complete species names and abbreviations are found in Appendix 2. \* Species excluded from the analysis of sensitivity to fragmentation.

Nestedness ranking	Species / Sites	F3	C2	C5	C4	F5	C6	F2	C1	C3	F6	F1	F4
1	Slil,Ajam,Awat	1	1	1	1	1	1	1	1	1	1	1	1
2	Vmaj	1	1	1	1	1	1	1	1	1	0	1	1
3	Csow	1	1	1	1	1	1	1	1	1	1	0	1
4	Gmor	1	1	1	1	1	1	1	1	0	1	1	1
5	Apha	1	1	1	1	1	1	1	1	1	0	1	0
6	Alit	1	1	0	1	1	1	1	1	1	1	1	1
7	Cper	1	1	1	1	1	1	1	0	1	1	0	1
8	Csen	0	1	1	1	1	1	1	1	1	1	1	0
9	Pdis	1	1	1	1	1	1	0	0	1	1	0	0
10	Gsor	1	1	0	0	1	1	1	1	0	0	1	1
11	Gcom	1	1	1	1	0	1	0	1	1	0	1	0
12	Phel	1	1	1	1	1	0	0	0	1	0	1	0
13	Slud	1	0	1	1	0	1	0	1	0	1	0	0
14	Cgod	0	1	0	1	1	1	1	0	0	1	0	0
15	Csal	1	1	0	0	0	0	0	0	1	1	0	0
16	Glea	1	0	1	0	0	0	1	1	1	0	0	0
17	Csub	0	1	1	0	0	1	0	0	0	1	0	0
18	Drot*	1	0	0	0	1	0	1	0	0	0	1	1
19	Atol	1	0	0	0	0	1	0	1	0	0	0	0
20	Laur*	1	0	0	0	0	0	1	0	0	0	0	1
21	Msil*	0	0	0	1	0	0	0	0	1	0	0	0
22	Cvil*	1	0	0	1	0	0	0	0	0	0	0	0
23	Hund*	0	0	1	0	0	0	0	1	0	0	0	0
24	Ubil*	0	0	0	0	1	0	0	0	0	0	0	0
25	Aazt*	0	0	1	0	0	0	0	0	0	0	0	0
26	Vspe*	0	0	0	0	0	0	0	0	1	0	0	0
27	Msch*	0	0	0	0	0	0	0	0	0	0	0	1

**Appendix 2.** List of phyllostomid bat species in fragmented and continuous rainforests in Los Chimalapas. Abbreviations in parentheses.

Species Phyllostomidae Family	Continuous Forests						Fragmented Forests						Total
	C1	C2	C3	C4	C5	C6	F1	F2	F3	F4	F5	F6	
Subfamilia Desmodontinae													
<i>Desmodus rotundus</i> (Drot)	0	0	0	0	0	0	5	10	7	10	26	0	58
Subfamilia Glossophaginae													
<i>Choeriscus godmani</i> (Cgod)	0	1	0	2	0	1	0	1	0	0	12	1	18
<i>Glossophaga commissarisi</i> (Gcom)	4	23	1	11	9	1	5	0	25	0	0	0	79
<i>Glossophaga leachii</i> (Glea)	1	0	1	0	5	0	0	2	1	0	0	0	10
<i>Glossophaga morenoi</i> (Gmor)	2	5	0	4	7	2	23	11	3	80	6	9	152
<i>Glossophaga soricina</i> (Gsor)	1	10	0	0	0	1	12	23	5	25	3	0	80
<i>Hylonycteris underwoodi</i> (Hun)	2	0	0	0	1	0	0	0	0	0	0	0	3
Subfamilia Phyllostominae													
<i>Glyphonycteris sylvestris</i> (Gsil)	0	0	1	1	0	0	0	0	0	0	0	0	2
<i>Micronycteris schmidtorum</i> (Msch)	0	0	0	0	0	0	0	0	0	1	0	0	1
<i>Lonchorhina aurita</i> (Laur)	0	0	0	0	0	0	0	12	6	1	0	0	19
<i>Phyllostomus discolor</i> (Pdis)	0	7	2	3	2	5	0	0	1	0	2	1	23
<i>Vampyrum spectrum</i> (Vspe)	0	0	1	0	0	0	0	0	0	0	0	0	1
Subfamilia Carollinae													
<i>Carollia perspicillata</i> (Cper)	0	1	8	5	8	1	0	1	7	9	21	7	68
<i>Carollia sowelli</i> (Csov)	21	58	29	12	28	38	0	13	15	95	9	19	337
<i>Carollia subrufa</i> (Csub)	0	2	0	0	1	1	0	0	0	0	0	1	5
Subfamilia Stenodermatinae													
<i>Sturnira lilium</i> (Slil)	2	10	3	13	14	13	39	25	35	26	22	47	249
<i>Sturnira ludovici</i> (Slud)	5	0	0	3	5	7	0	0	1	0	0	1	22
<i>Artibeus lituratus</i> (Alit)	9	10	21	11	0	5	17	42	63	15	12	3	208
<i>Artibeus jamaicensis</i> (Ajam)	11	4	58	5	12	9	1	1	30	2	11	40	184
<i>Artibeus aztecus</i> (Aazt)	0	0	0	0	1	0	0	0	0	0	0	0	1
<i>Artibeus phaeotis</i> (Apha)	3	6	3	1	4	2	1	1	1	0	5	0	27
<i>Artibeus toltecus</i> (Atol)	3	0	0	0	0	2	0	0	1	0	0	0	6
<i>Artibeus watsoni</i> (Awat)	9	11	16	9	16	21	10	26	17	10	20	11	176
<i>Centurio senex</i> (Csen)	1	8	6	1	4	2	1	3	0	0	4	1	31
<i>Chiroderma salvini</i> (Csal)	0	1	1	0	0	0	0	0	1	0	0	1	4
<i>Chiroderma villosum</i> (Cvil)	0	0	0	1	0	0	0	0	1	0	0	0	2
<i>Platyrrhinus helleri</i> (Phel)	0	3	3	1	5	0	2	0	1	0	3	0	18
<i>Uroderma bilobatum</i> (Ubil)	0	0	0	0	0	0	0	0	0	0	2	0	2
<i>Vampyrodes major</i> (Vmaj)	18	6	8	2	1	8	1	3	5	1	1	0	54
<b>Total</b>	<b>92</b>	<b>166</b>	<b>162</b>	<b>85</b>	<b>123</b>	<b>119</b>	<b>117</b>	<b>174</b>	<b>226</b>	<b>275</b>	<b>159</b>	<b>142</b>	<b>1,840</b>